

AURAJET™ HANDSET

Installation Guide

Technical Specifications:

Operating Pressure:

Min: 100kPa/1bar

Max: 500kPa/5bar*

Optimum: 150kPa/1.5bar - 500kPa/5bar

Operating Temperature:

Hot: Max 70°C*

Cold: Min 5°C

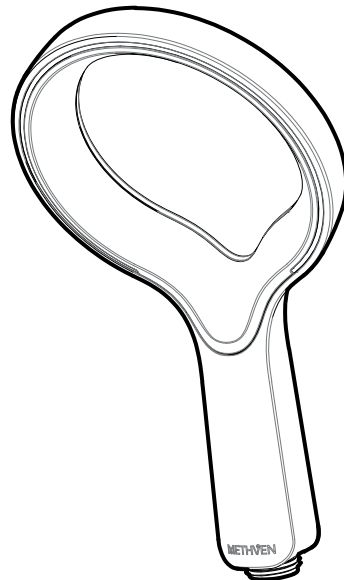
Inlet Connections:

½" BSP

** Regional specific regulations apply.*

Please refer to your warranty statement at

www.methven.com



METHVEN
www.methven.com

IMPORTANT: Please read all of the instructions before installation.

General:

- Methven recommends this product is installed by a licensed plumber in compliance with all relevant regional regulations.
- After installation all connections must be checked for leaks.
- All outlets used primarily for personal hygiene shall deliver water at a safe temperature as per regional regulations.
- It is the responsibility of the installer to ensure a waterproof seal is achieved.
- NOTE: Some showers may not provide an effective shower when used with gravity fed heated water systems or where pressures are less than 150kPa/1.5bar at the outlet. Additionally showers with flow rates of less than 9L/min may not allow the following to function correctly:
 - some instantaneous water heaters
 - some tempering valves
 - some thermostatic mixing valves

Care and Cleaning:

Never use abrasives or abrasive cleaning agents to clean this product. Clean regularly with contamination free warm soapy water and a damp soft cloth.

A filter washer should be installed in the hose cone on the water outlet and it should be cleaned periodically.

If shower performance is compromised by the build-up of lime-scale, soak in limescale remover for up to 10 minutes. Do not use products containing chlorine bleach or hydrochloric acid as these can damage the shower. Always rinse the shower thoroughly after cleaning to remove cleaning products that can damage the shower.

Never insert objects into the spray slot or attempt to remove limescale with sharp objects or abrasives.

Methven warrants this product against manufacturing defects and that it is suitable for use under the general operating conditions specified in this instruction sheet. However, regional regulations apply and may affect your warranty. Please refer to www.methven.com or call customer service for full details.

New Zealand
0800 804 222

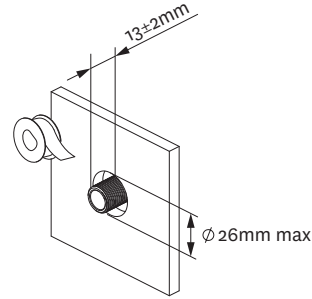
Australia
1300 638 483

UK
0800 195 1602

Elbow Installation (if supplied):

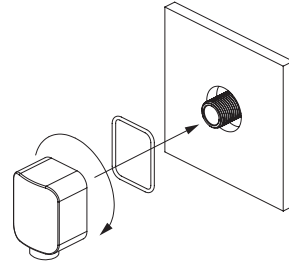
Step 1

- Wall lining hole should be cut or finished as per the dimension shown in the diagram on the right.
- Cut off the threaded nipple $13\pm 2\text{mm}$ from the wall lining and apply thread seal tape to ensure a good seal.



Step 2

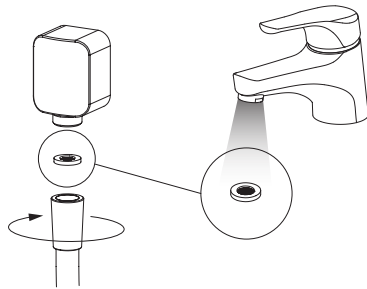
- Screw the elbow onto the nipple ensuring that the o-ring is sufficiently compressed to create a watertight seal.
- Ensure that the elbow is oriented vertically with the outlet oriented downwards.



Care and Cleaning:

Never use abrasives or abrasive cleaning agents to clean this product. Clean regularly with contamination free warm soapy water and a damp soft cloth.

Periodically the filter washer should be removed from the end of the shower hose and cleaned.



Methven warrants this product against manufacturing defects and that it is suitable for use under the general operating conditions specified in this instruction sheet. However, regional regulations apply and may affect your warranty. Please refer to www.methven.com or call customer service for full details.

New Zealand
0800 804 222

Australia
1300 638 483

UK
0800 195 1602

439980

ISSUE B

EDGE RAIL Installation Guide

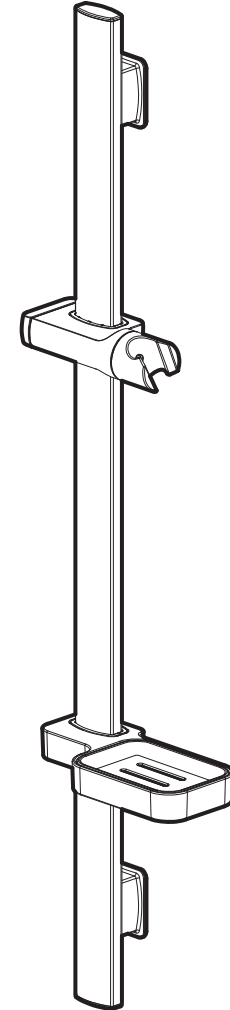
Technical Specifications:

Inlet Connections:

All $\frac{1}{2}$ " BSP

** Regional specific regulations apply.*

Please refer to your warranty statement at
www.methven.com

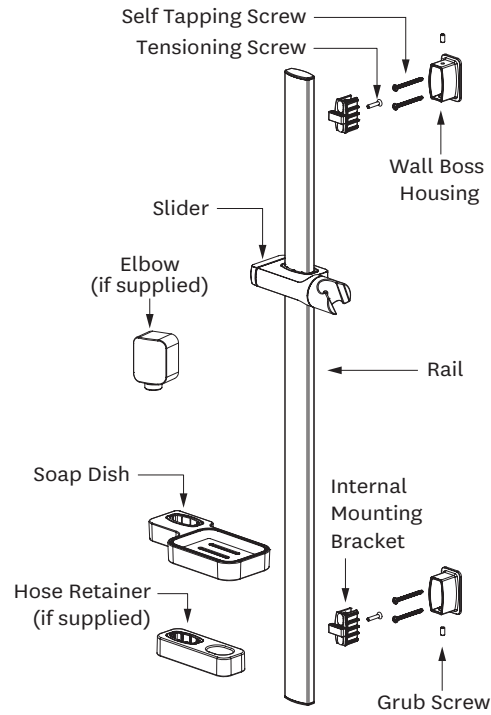


METHVEN
www.methven.com

IMPORTANT: Please read all of the instructions before installation.

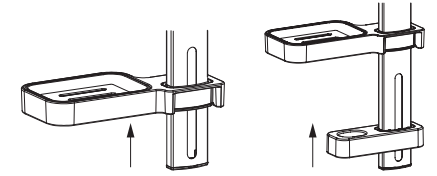
General:

- This product must be installed in compliance with all relevant regional regulations.
- It is the responsibility of the installer to ensure a waterproof seal is achieved between the product and mounting surface. If in doubt about the quality of the seal, remove the product and reinstall using silicone to ensure a seal is achieved.
- All pipe work must be thoroughly flushed prior to the installation of the hose.
- After installation all connections must be checked for leaks.
- All outlets used primarily for personal hygiene shall deliver water at a safe temperature as per regional regulations.



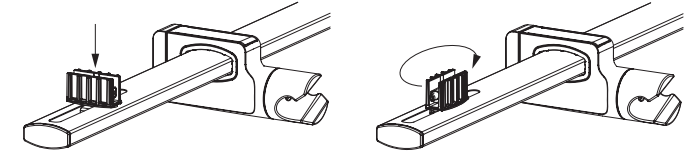
Step 2

- Slide soap dish onto the rail.
- Slide hose retainer onto the rail (if supplied).



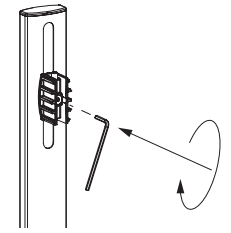
Step 3

- Fit the internal mounting brackets by locating in slot and rotating 90°.



Step 4

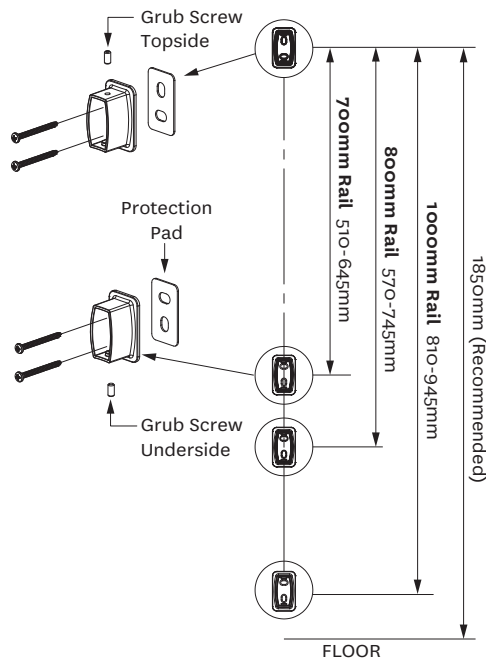
- Tighten the tensioning screws lightly with the hex key provided.
- Rail can be orientated so that handset sits on opposite side of the rail.**



Step 1

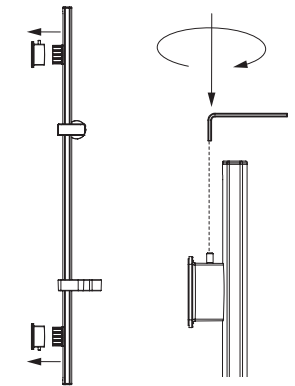
- Mount the wall boss housings in desired position with the screws. Check the mounts are vertically aligned. Ensure the grub screws are located on the correct sides as shown.

Ensure protection pads are used between wall bosses and tiles.



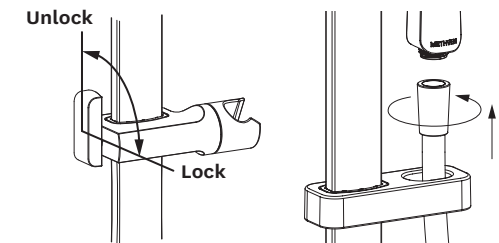
Step 5

- Match the mounting brackets to wall bosses and push into place.
- Slide the rail up or down to centralise the brackets.
- Remove the rail and tighten the tensioning screws firmly.
- Relocate the rail onto wall bosses and tighten grub screws top and bottom.



Step 6

- To adjust slider position, rotate the slider handle to unlock and lock the slider as shown.
- Insert the end of the shower hose through the slot in the hose retainer and screw the handset onto the hose.



METHVEN

METHVEN

COOL TOUCH WITH EASY FIX THERMOSTATIC BAR VALVE Installation and Maintenance Guide



Please retain this document
for future reference.

This product should be fitted
in compliance with Water
Regulations, by a qualified
plumber.

Use only a clean damp cloth
to maintain the surface finish,
use of abrasive cleaning
materials will invalidate your
guarantee.

Website
www.methven.com

OPERATING SPECIFICATION

Pressure

Minimum working pressure - 0.3 bar

Recommended working pressure 0.5 - 3 bar

Maximum working pressure - 5 bar

(Pressure above 5 bar must be reduced via a pressure reducer)

In order to assure maximum efficiency of the mixer, the operating pressures should be balanced.

Water temperature

Inlet hot water supply

Maximum 85c

Recommended 65c

Inlet cold water supply

10c - 25c

IMPORTANT

A minimum 10c difference between outlet temperature and hot supply temperature must be maintained at all times

Guarantee

Your product comes with a 5 year guarantee, this includes 2 years parts and labour followed by a further 3 years parts only, subject to the following:

Proof of purchase will be required.

The guarantee does not cover faults or damage caused by incorrect installation and/or maintenance, ordinary wear and tear, water composition etc, including:

Supply pipes reversed

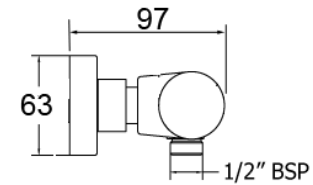
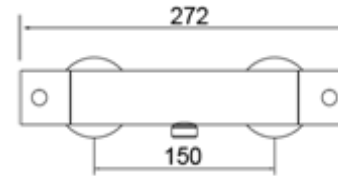
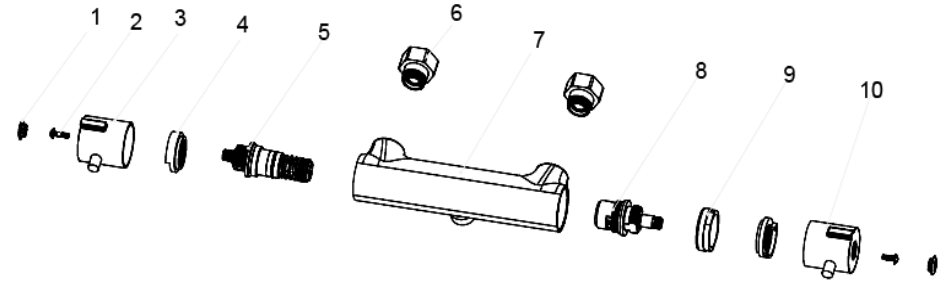
Incorrect pressure or temperature

Incorrect use

Foreign bodies and/or scale due to the water composition.

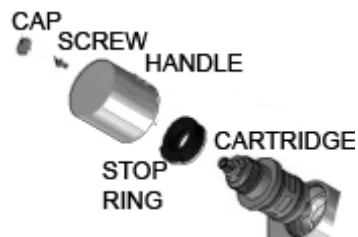
Incorrect cleaning

Cleaning should be carried out using a clean damp cloth, use of abrasive agents or materials on the product, will invalidate your guarantee.



Maintenance

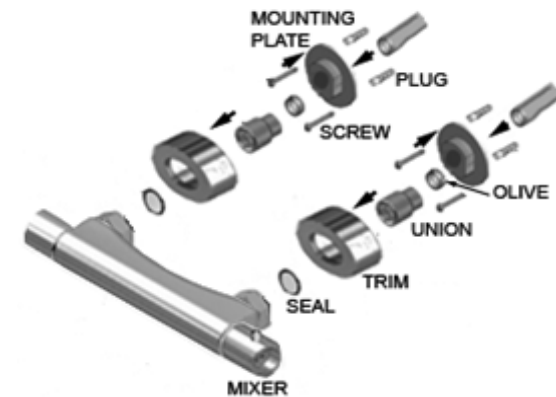
To replace the thermostatic cartridge;
 Turn off water supply
 Remove the handle cap , followed by the screw
 Inside the handle, remove the screw
 Pull handle from mixer
 Take note of the stop ring position for re-assembly after maintenance
 Remove the cartridge from the mixer body.
 Clean or replace the cartridge as necessary, then replace, ensuring components are located correctly to give correct maximum set temprature.
 If re-calibration is required follow instruction in "operation and setting"
 Once water supply is turned on check for leaks.



Installation

(See diagram)

Prepare the supply pipes at 150mm centres, allowing approx 22mm of pipe to be exposed from the finished wall.
 The pipework must be flushed prior to installation.
 After flushing the pipework, install the mixer as a standard exposed fitting, with the outlet facing downwards.
 The hot supply pipe must be connected to the hot inlet of the mixer, indicated by the red dot.
 Place the mounting plate over the pipe end and mark drill holes, ensuring no pipes or wires are affected.
 Once holes are marked remove and drill holes, then fit wall plugs,
 Next place the mounting plate over pipe end and locate over drill holes, secure using screws provided.
 Place olive over pipe end and then fit threaded union, tighten using a two spanners one on the flats of the union the other on the flat of the mounting plate.
 Tighten until fully secured, to create a compression fitting seal.
 Once secured, screw the trim onto the threaded union and screw up to finished wall (if required sealant can be used)
 Place seals into mixer inlets and connect mixer to union and secure using a spanner (take care not to damage product finish)
 Once all connections have been made turn on water supply to check for leaks, ensuring the valve is in the OFF position



OPERATION & SETTING

To control the temperature of the shower, turn the left handle for more hot or cold water, in the direction indicated by the marking.

To control the flow of water turn the handle to regulate the flow of water from the shower in the direction shown on the mixer.

The product also has override buttons, the flow control allows for reduced flow, to activate full flow, press the button and continue to turn the handle

The temperature control allows for a temperature stop position this can be exceeded by pressing the button and continuing to turn the handle

If on installation the temperature is not to your requirement, this can be re-calibrated.

Turn temperature handle to fully hot.

Remove the handle cap , followed by the screw

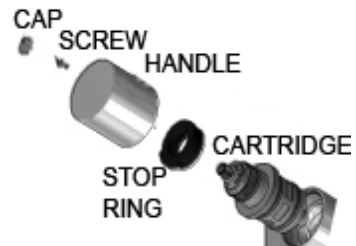
Pull handle from valve.

Turn the spindle on the thermostat until the desired temperature is reached.

(Always maintain the 10c difference between supply and mixed)

Once the temperature is reached, replace the handle so that the stop is in the maximum position, replace screw and handle cap.

Re-calibration should only be carried out when absolutely necessary



Maintenance

To replace the flow control valve:

Turn off water supply

Remove handle by forcing off handle cap

Inside the handle, remove the screw

Pull handle from valve.

Take note of stop ring positioning for re-fit

Pull off stop ring.

Remove valve from mixer, using a spanner unscrew the nut

then unscrew the valve, taking care not to damage the pipe work

Clean or replace valve as necessary.

Replace all components, turn on water supply and check for leaks.

