

# BRAUN

Silk·épil® 9

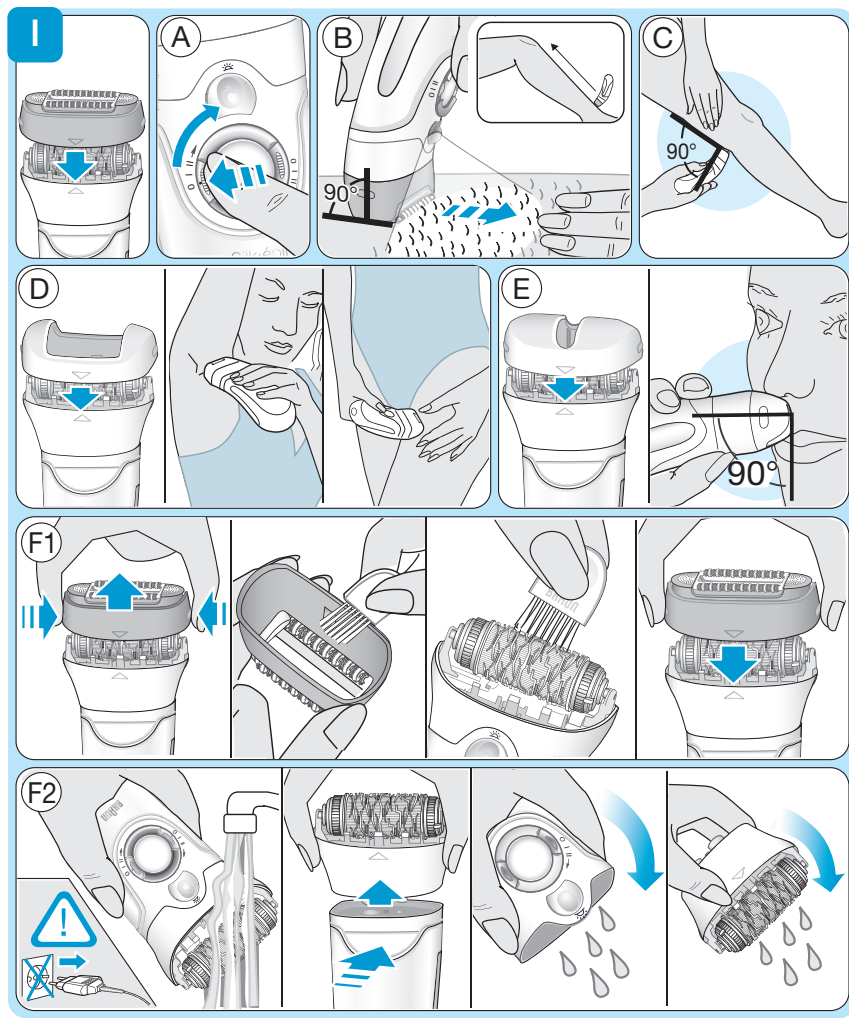
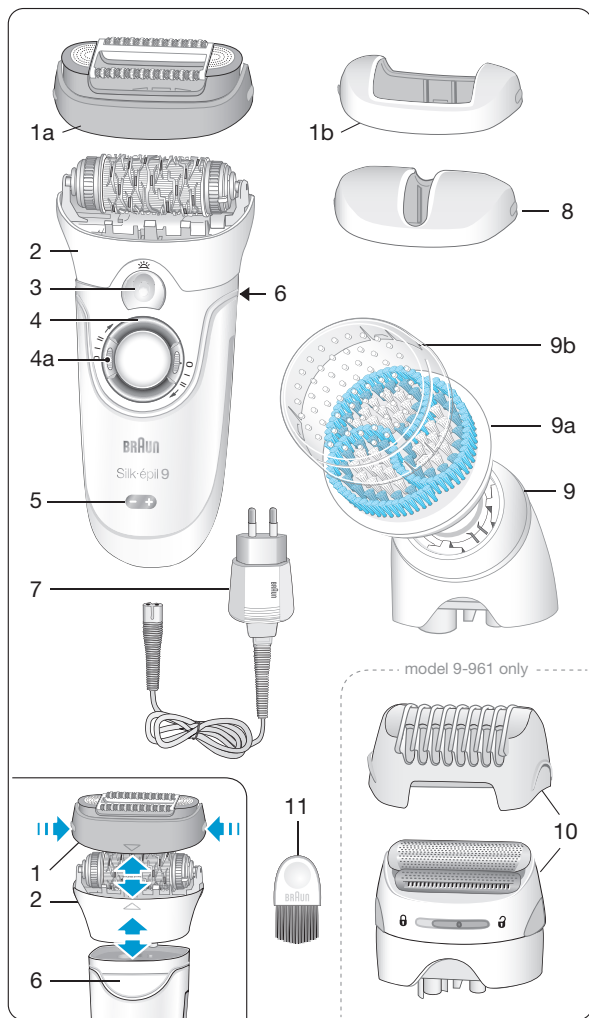
SkinSpa



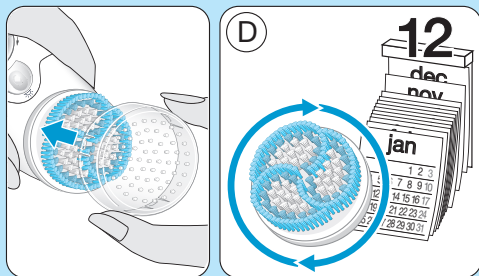
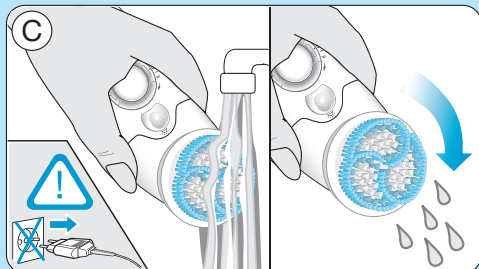
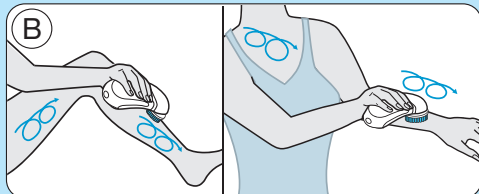
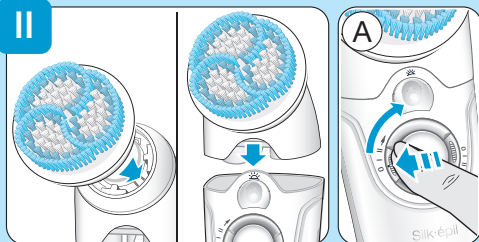
Type 5377

[www.braun.com](http://www.braun.com)

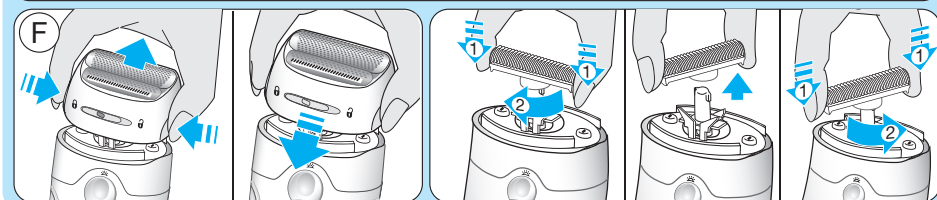
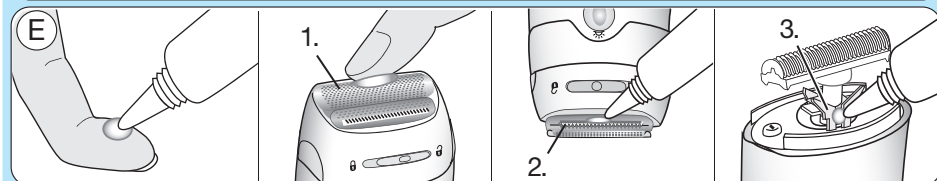
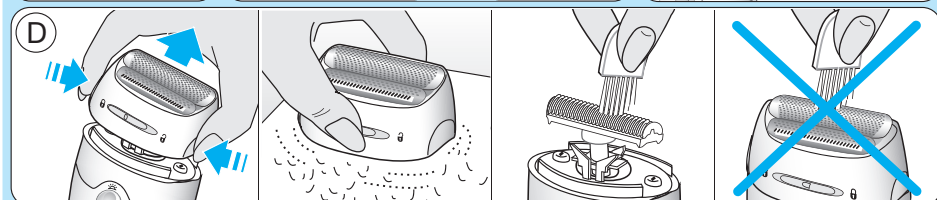
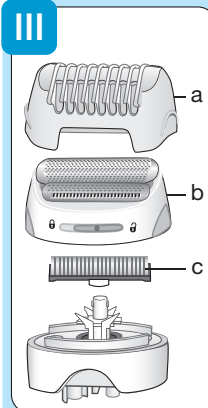
9-941 Spa  
9-961 Spa  
9-969 Spa



II



III



## English

Our products are engineered to meet the highest standards of quality, functionality and design. We hope you thoroughly enjoy using your Braun Silk-épil 9.


Please read the use instructions carefully before using the appliance and keep them for future reference.

Braun Silk-épil 9 SkinSpa offers a complete system for beautiful skin:

- The extra wide epilation head (2) removes the shortest hair (0.5 mm) from the root, leaving your skin smooth for weeks.
- The exfoliation brush (9a) visibly refines your skin by sweeping away dry skin cells via gentle micro-vibrations.
- The shaver head (10) is designed for a fast and close shave of underarms and bikini line.

The appliance is suitable for dry and wet usage except for the shaver head attachment which should only be used on dry skin.

## Important

- For hygienic reasons, do not share this appliance with other persons.
- This appliance is provided with a special cord set with an integrated Safety Extra Low Voltage power supply. Do not exchange or manipulate any part of it. Otherwise there is risk of electric shock.
-  This appliance is suitable for use in bathtub or shower. For safety reasons, it can only be operated cordlessly.

- This appliance can be used by children aged from 8 years and above and persons with reduced physical, sensory or mental capabilities or lack of experience or knowledge if they have been given supervision and instructions on its safe use and understand the hazards involved. Children should not play with the appliance. Cleaning and user maintenance should not be made by children unless they are older than 8 years and supervised.
- When switched on, the appliance must never come in contact with the hair on your head, eyelashes, textile ribbons, etc. to prevent any danger of injury as well as to prevent blockage or damage to the appliance.

## Description

- 1a High frequency massage cap
- 1b Skin contact cap
- 2 Extra wide epilation head
- 3 Smartlight
- 4 Switch with lock keys (4a)
- 5 Charging light
- 6 Release button
- 7 Special cord set
- 8 Facial cap
- 9 Brush adapter
- 9a Exfoliation brush
- 9b Protective cover
- 10 Shaver head
- 11 Cleaning brush

## Charging

- Before use, charge the appliance. For best performance, we recommend that you always use a fully charged appliance. Using the special cord set, connect the appliance to an electrical outlet with the motor switched off. Charging time is approximately 1 hour.
- The charging light (5) flashes green (+) to show that the appliance is being charged. When the battery is fully charged, the green charging light shines permanently. Once fully charged, use the appliance without the cord.
- When the charging light flashes red (–), reconnect the appliance to an electrical outlet via the special cord set in order to recharge it.
- A full charge provides up to 40 minutes of cordless operation time.
- Wet usage might reduce the operation time. We recommend that you recharge the appliance after each use.
- The best temperature range for charging, using and storing the appliance is between 15 °C and 35 °C. In case the temperature is far beyond this range, charging might take longer and the cordless operation time might be reduced.

## Overheating protection

As a safety feature to avoid the unlikely event of the appliance overheating, it may happen that the charging light (5) shines red for 8 seconds and then the appliance turns off automatically. In this case, turn the switch back to the position «0» (off) and let the appliance cool down.

## How to operate the appliance

Pressing the lock key (4a) turn the switch (4) clockwise. You can select speed «I» or «II».

The Smartlight (3) shines as long as the appliance is switched on. This provides better visibility of fine hairs or skin.



To remove the epilation head (2), press the release button (6). To change caps, press their lateral ribs and pull off.

## I Epilation

### Epilation tips

If you have not used an epilator before, or if you have not epilated for a longer period of time, it may take a short time for your skin to adapt to epilation. The discomfort experienced in the beginning will decrease considerably with repeated use as the skin adapts to the process.

When epilating for the first time, it is advisable to epilate in the evening, so that any possible red-denning can disappear overnight. To relax the skin we recommend applying a moisturizing cream after epilation.

Epilation is easier and more comfortable when the hair is between 0.5–5 mm long. If hairs are longer, we recommend that you shave first and let the hair grow back to at least 0.5 mm length.

Dry usage: Your skin must be dry and free from grease or cream.

Wet usage: Make sure your skin is very moist in order to achieve optimum gliding conditions for the appliance.

### How to epilate

Make sure that the epilation head (2) is clean and provided with a cap (1a or 1b).

A Select speed «I» for gentle epilation, speed «II» for efficient epilation.

B Always stretch your skin when epilating. Make sure that the epilation area is in close contact with your skin.

Guide the appliance in a slow, continuous movement without pressure against the hair growth, in the direction of the switch. As hair can grow in different directions, it may also be helpful to guide the appliance in different

directions to achieve optimal results. The massage cap (1a) ensures best skin comfort during epilation. If you are used to the sensation of epilation, you may replace the massage cap with the skin contact cap (1b) which provides a closer skin contact and an improved adaptation to all body areas.

### C Leg epilation

Epilate your legs from the lower leg in an upward direction. When epilating behind the knee, keep the leg stretched out straight.

### D Underarm and bikini line epilation

In sensitive areas, we recommend using the skin contact cap (1b). Especially during the first applications these areas are particularly sensitive to pain. Therefore, we recommend that you select speed «I» for the first few times.

With repeated usage the pain sensation will diminish.

Before epilating, thoroughly clean the respective area to remove residues (like deodorant). Then carefully dab dry with a towel. When epilating the underarm, keep your arm raised up so that the skin is stretched and guide the appliance in different directions. As skin may be more sensitive directly after epilation, avoid using irritating substances such as deodorants with alcohol.

### E Facial epilation

For removing any unwanted hair from the face or other sensitive areas, use the facial cap (8) as an optional attachment to be placed on the epilation head (2). For the first few usages, we recommend that you select speed «I» in order to get used to epilation in sensitive areas.

Prior to epilation, we recommend cleaning the skin thoroughly with a disinfecting toner containing alcohol. When epilating the face, stretch the skin with one hand and slowly guide the epilator with your other hand in the direction of the switch.

## F Cleaning the epilation head

### 1 Cleaning with the cleaning brush (11):

Remove the cap and brush it out. Thoroughly clean the tweezers from the rear side of the epilator head with the brush dipped into alcohol. While doing so, turn the tweezer element manually. This cleaning method ensures best hygienic conditions for the epilation head.

### 2 Cleaning under running water:

After each wet usage, clean the appliance under running water. Remove the cap and hold the appliance with the epilation head under hot running water. Then press the release button (6) to remove the epilation head. Shake the appliance and the epilation head to remove excess water and leave both parts to thoroughly dry out before re-assembling.

## General information on epilation

All methods of hair removal from the root can lead to irritation (e.g. itching, discomfort and reddening of the skin) depending on the condition of the skin and hair. This is a normal reaction and should quickly disappear, but may be stronger when you are removing hair at the root for the first few times or if you have sensitive skin. If, after 36 hours, the skin still shows irritation, we recommend that you contact your physician. In general, the skin reaction and the sensation of pain tend to diminish considerably with the repeated use of Silk-épil.

In some cases inflammation of the skin could occur when bacteria penetrate the skin (e.g. when sliding the appliance over the skin). Thorough cleaning of the epilation head before each use will minimise the risk of infection.

If you have any doubts about using this appliance, please consult your physician. In the following cases, this appliance should only be used after prior consultation with a physician: eczema, wounds, inflamed skin reactions such as folliculitis (purulent hair follicles) and varicose veins around moles, reduced immunity of the skin, e.g. diabetes

mellitus, during pregnancy, Raynaud's disease, haemophilia, candida or immune deficiency.

## II Exfoliation

### Exfoliation tips

The exfoliation brush (9a) has been developed for full body usage, especially for legs, arms and décolletage. It has not been designed for usage in the face. The gentle brushing action with more than 3000 micro-vibrations per minute effectively removes dry skin cells for a visibly improved skin appearance.

You can use the exfoliation brush on a weekly basis on dry or wet skin during your shower routine. However, when using it in the bathtub, do not immerse it fully in water since this will not provide optimal exfoliation results.

Using the brush on wet skin provides 4 times better exfoliation results than a manually applied cosmetic exfoliation product alone. For best exfoliation results, extra comfort and a pampering experience, we recommend to use the brush on wet skin with your preferred body scrub or shower gel.

### How to exfoliate

Click the exfoliation brush (9a) onto the brush adapter (9).

Click the brush adapter onto the appliance.

A Select speed «I» for sensitive skin areas, speed «II» for normal skin.

B Slowly guide the exfoliation brush in circular movements over your skin to gently refine it. Avoid holding the brush on the same skin area for prolonged time. Do not use the exfoliation brush on your face.

The regular use of the exfoliation brush (e.g. once a week) helps minimizing the risk of ingrown hairs: Dead skin cells are removed so

that fine, re-growing hairs can easily get through to the skin surface. We recommend that you exfoliate at least 1–2 days before you want to epilate.

### C Cleaning the exfoliation brush

After use, rinse the exfoliation brush under running water.

If needed, you may use some liquid soap to thoroughly clean it.

Shake the brush to remove excess water and leave it to dry.


Attach the protective cover (9b) before storing the brush.

### D Replacing the exfoliation brush


With weekly use, we recommend that you replace the brush unit (9a) after 12 months. Brush refills (ref. no. 79 Spa) are available from your retailer or Braun Service Centres or via [www.service.braun.com](http://www.service.braun.com).

## III How to use the shaver head

The shaver head (10) is designed for a fast and close shave of legs, underarms and bikini line, contour trimming and cutting hair to 5 mm length. With the shaver head attached, only use the appliance on dry skin and with speed setting «II».

A Shaving: select «».

B Contour trimming: select «».

C Trimming hair to 5 mm length: select «» and put on the trimmer cap (a).

D Cleaning: Do not clean the shaver foil (b) with the brush as this may damage the foil.

E The shaving parts need to be lubricated regularly every 3 months.

F Replace the foil frame (b) and cutter block (c) when you notice a reduced shaving performance. Replacements parts can be obtained

from your retailer or Braun Customer Service Centres or via [www.service.braun.com](http://www.service.braun.com). Do not shave with a damaged foil.

### Disposal

This product contains batteries and recyclable electronic waste. To protect the environment, do not dispose of it in the household waste, but take it to appropriate local collection points.



Subject to change without notice.

### Guarantee

We grant a 2 year guarantee on the product commencing on the date of purchase. Within the guarantee period we will eliminate any defects in the appliance resulting from faults in materials or workmanship, free of charge either by repairing or replacing the complete appliance at our discretion.

This guarantee extends to every country where this appliance is supplied by Braun or its appointed distributor.

This guarantee does not cover: damage due to improper use, normal wear or use as well as defects that have a negligible effect on the value or operation of the appliance. The guarantee becomes void if repairs are undertaken by unauthorised persons and if original Braun parts are not used.

To obtain service within the guarantee period, hand in or send the complete appliance with your sales receipt to an authorised Braun Customer Service Centre (address information available online at [www.service.braun.com](http://www.service.braun.com)).

### For UK only:

This guarantee in no way affects your rights under statutory law.