

F A U S

DESIGNERS CHOICE LAMINATE FLOORING



WATER RESISTANT LAMINATE FLOORING
AQUA - 0

INDEX

AQUA - 0 - Water Resistant Technology	3
FAUS Laminate Flooring Advantages	4
FAUS Patented Technologies	5
FAUS Patterns	6
FAUS Collections	7
Masterpieces	8
Industry Tiles	18
Stone Tiles	22
Retro	24
Syncro	30
Accessories and Installation	32
Technical Information	33

FAUS AQUA-0

Our FAUS AQUA-0 technology with its impermeable surface provides water-resistant laminate flooring for up to 72 hours.

WATER-RESISTANT

Our high-density board is water-repellent treated to ensure that any board expansion is kept to a minimum and less than 9%.

HERMETIC FIXING

Thanks to our anchored click system, a completely air-tight joint is always achieved

JOINTGUARD

With its pressed bevelled edging, floor joints are protected by overlay and decorative paper.

SEALED EDGES

Surfaces are impregnated with paraffin to repel moisture and protect the board.

APPLICATIONS

All these technological advances make our FAUS flooring the ideal surface for all types of room and interior-design projects.



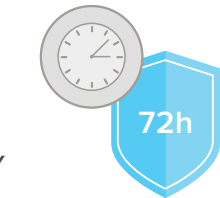
BATHROOMS & KITCHENS



WET AREAS



COMMERCIAL ZONES



RESISTANCE & DURABILITY

For technical specifications, please visit:
Informations techniques:
www.faus.international



FAUS LAMINATE FLOORING ADVANTAGES



ABRASION RESISTANCE AC6 / AC5

FAUS laminate floors are characterised by high resistance to wear and abrasion.



CLASS OF USE 33

Thanks to the technical properties and quality of the materials used, Class 33 certification ensures suitability for use in high traffic areas.



FLAME RETARDANT

Resistant to fire. Due to the treatment the board receives in its manufacturing process, FAUS floors are certified as Euroclass Bfl-s1 (EN13501-1).



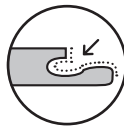
ANTISTATIC

Manufactured with properties that help prevent or eliminate static electricity in the room, FAUS floors help promote comfort and well-being in any situation.



HDF “HIGH DENSITY FIBERBOARD” WITH WATER-REPELLENT TREATMENT

A core board which is composed of water-repellent resins that prevent swelling of the board.



SEALING EDGES AROUND THE PERIMETER

The entire surface of the FAUS anchoring system is impregnated with a paraffin that repels moisture and protects the board in the event of occasional filtration.



ULTRA MATT

FAUS Flooring is manufactured with an intense anti-fingerprint matt finish, which avoids finger marks.



HIGH SURFACE RESISTANCE

All FAUS floors have a high surface resistance to impact, wear, scratching and burns.



ANTIALLERGIC AND ANTIBACTERIAL

Due to the composition of FAUS products, they have antiallergic and antibacterial properties, which make them the ideal floor for families with children.



SUITABLE FOR FLOORS WITH UNDERFLOOR HEATING

FAUS laminate floors are fully compatible with underfloor heating systems.



HEALTHY FLOORING

SCS Global Services, the company that regulates indoor air quality, grants FAUS the Indoor Air Quality certificate SCS-EC10.3-2014 v4.0.



ENVIRONMENTAL FRIENDLY

With the FSC® and PEFC™ certifications, FAUS guarantees that all its products are manufactured in a sustainable and respectful manner.

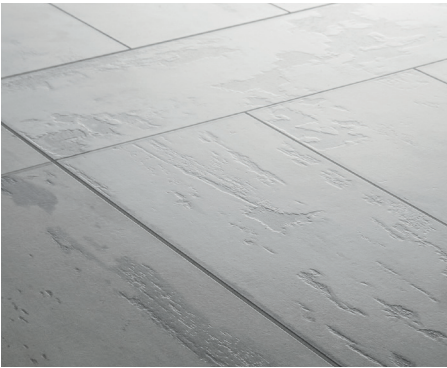


AQUA-0

Our FAUS AQUA-0 technology with its impermeable surface provides water-resistant laminate flooring for up to 72 hours.



FAUS PATENTED TECHNOLOGIES



MICROBEVEL

Thanks to this technology, FAUS flooring perfectly reproduces the microbevels created by real wood flooring planks.



REALFEEL

Hyper realistic floors that emulate every detail of the original materials. Touch every vein, knot or pore of the wood with the tips of your fingers.



INTERPLANK

Patented technology allows the designs to form patterns beyond regular planks, such as chevron and herringbone.



JOINTGUARD

This technology allows the edges of the planks to be protected, avoiding their deterioration due to rubbing and footsteps.



ULTRA MATT

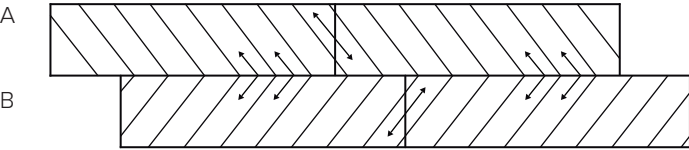
Get the worn effect of sawn wood with the new Ultra Matt manufacturing technology. Manufactured with an intense anti-fingerprint matt surface. It is also extremely hardwearing and durable.

PATTERNS THAT MAKE US UNIQUE

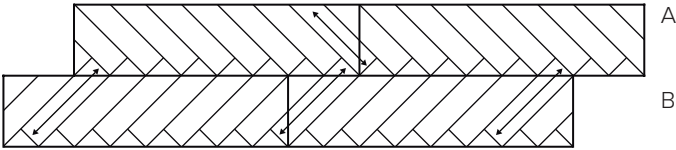
Each unique and exclusive designs feature of FAUS flooring is created with much care by our experts. They represent the authentic patterns offered by original materials, achieving a realism that nobody else in the market is able to offer.

MASTERPIECES

Chevron

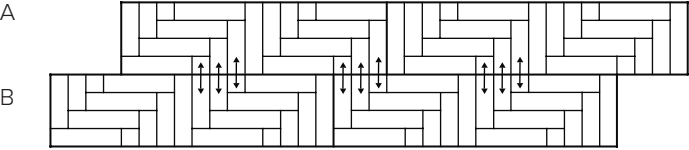


Herringbone



STONE TILES

Parquet



FAUS COLLECTIONS

FAUS collections have been created with care by hand to last over time while maintaining natural beauty and simplicity. We invest all our resources and efforts in designing every detail of each piece, applying unique manufacturing technologies and selecting the materials with the highest technical rigour.

As a result, we obtain inimitable decorative solutions: exclusive designs with a high degree of sophistication. We aspire to align FAUS floors with our customer's lifestyle.

MASTERPIECES

AC6 / JOINTGUARD / MICROBEVEL /
INTERPLANK / AQUA-0 / LIFETIME WARRANTY

Fashionable and chic designs inspired by the European palaces of the 18th and 19th century, skilfully manufactured to recreate grand Chevron and Herringbone designs in a broad colour palette.

CHEVRON

Offering carefully selected shades, full of realism and the highest quality technical characteristics.



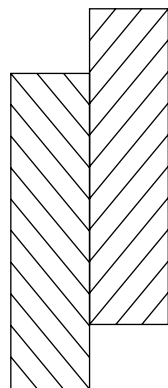
Chevron Natural
S173101 / 1184 x 293 x 8 mm
2.08 m² per pack
Planks per pack : 6



Chevron Grey
S174221 / 1184 x 293 x 8 mm
2.08 m² per pack
Planks per pack : 6



Chevron Chic
S176942 / 1184 x 293 x 8 mm
2.08 m² per pack
Planks per pack : 6



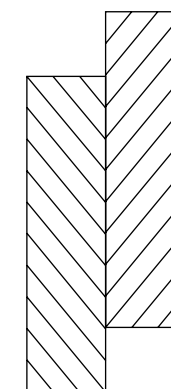
NATURAL
CHEVRON

S173101 / 1184 x 293 x 8mm
2.08 m² per pack
6 planks per pack



GREY
CHEVRON

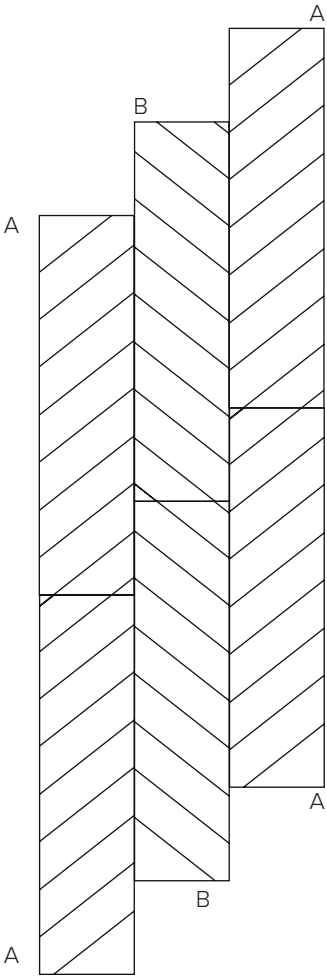
S174221 / 1184 x 293 x 8mm
2.08 m² per pack
6 planks per pack





CHIC CHEVRON

-
S176942 / 1184 x 293 x 8mm
2.08 m² per pack
6 planks per pack



HERRINGBONE

-
Classic styles, created by artisans and revisited with a modern twist to create timeless designs.



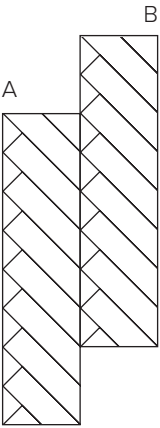
Natural Herringbone
S174276 / 1174 x 293 x 8 mm
2.07 m² per pack
Planks per pack : 6

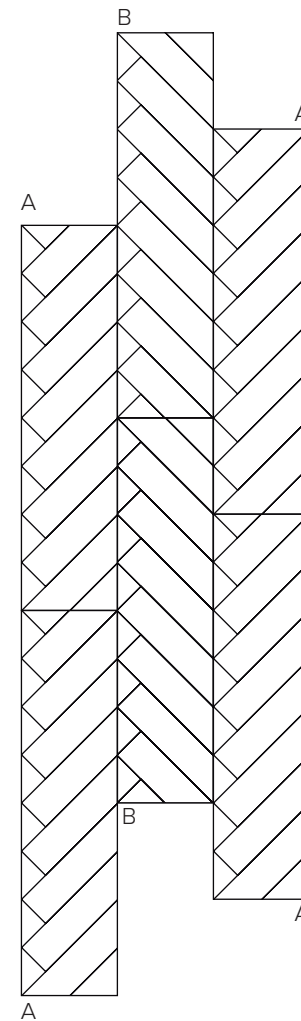


Rivau Herringbone
S180192 / 1174 x 293 x 8 mm
2.07 m² per pack
Planks per pack : 6



NATURAL
HERRINGBONE
-
S174276 / 1174 x 293 x 8mm
2.07 m² per pack
6 planks per pack





RIVAU HERRINGBONE

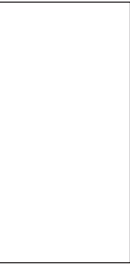
S180192 / 1174 x 293 x 8mm
2.07 m² per pack
6 planks per pack



INDUSTRY TILES

AC6 / JOINTGUARD / MICROBEVEL / AQUA-0
LIFETIME WARRANTY

Marbles and cements make up the most desirable stone,
available in a wide variety of formats.
Stunning marble and cement effects replicate a modern industrial style without
the expense of the real thing. Ideal for use in urban developments.



WHITE
MARBLE

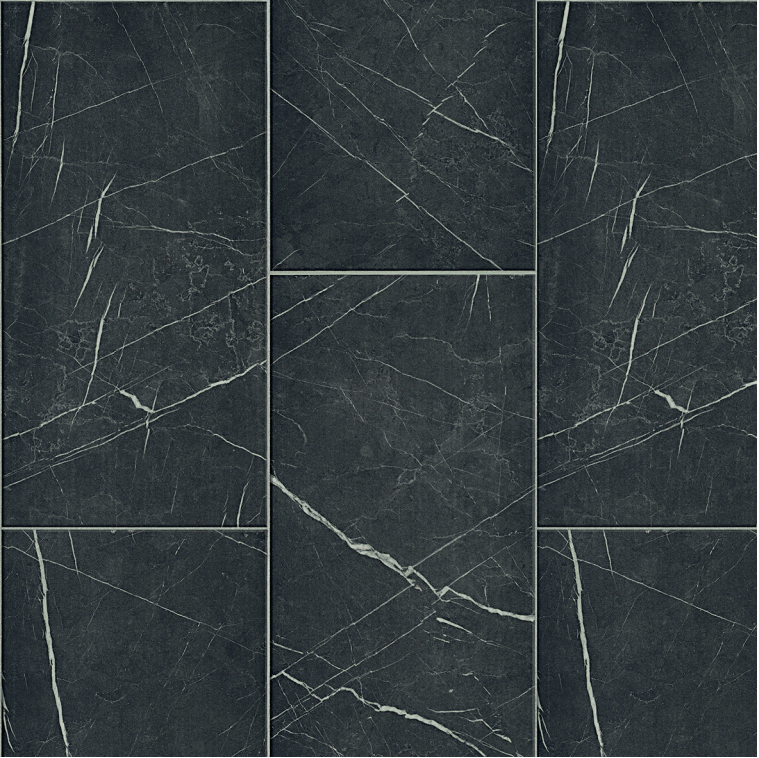
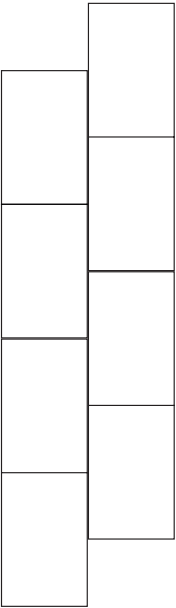
-
S179677 / 1182 x 601 x 8mm
2.13 m² per pack
3 tiles per pack





BLACK
MARBLE

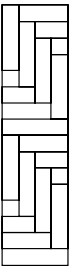
-
S180239 / 1188 x 295 x 8mm
2.10 m² per pack
6 planks per pack





PARQUET
STONE

S176584 / 1183 x 293 x 8mm
2.08 m² per pack
6 planks per pack



STONE EFFECTS

**AC6 / JOINTGUARD / MICROBEVEL /
MULTI-DIRECTIONAL / INTERPLANK / AQUA-0**

Enjoy all the visual and aesthetic characteristics of stone
with the comfort and practicality of laminate.
Parquet Stone perfectly reproduces the
irregular patterns of stone flooring.



RETRO
AC6 / JOINTGUARD / MICROBEVEL / AQUA-0
LIFETIME WARRANTY

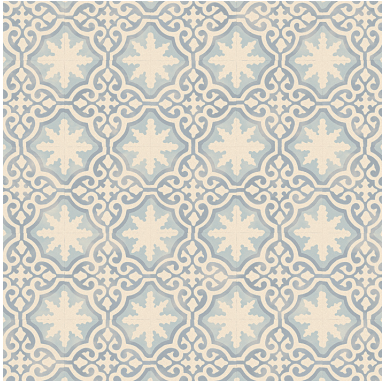
An artistic collection of Victorian and Vintage tiles,
with a contemporary twist.



Mosaic Tile
S180147 / 1179 x 394 x 8 mm
2.32 m² per pack
Planks per pack : 5



Traditional Tile
S172616 / 1179 x 394 x 8 mm
2.32 m² per pack
Planks per pack : 5

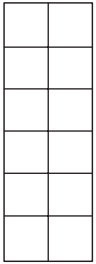


Victorian Tile
S177031 / 1179 x 394 x 8 mm
2.32 m² per pack
Planks per pack : 5



MOSAIC
TILE

-
S180147/ 1179 x 394 x 8mm
2.32 m² per pack
5 planks per pack



TRADITIONAL
TILE

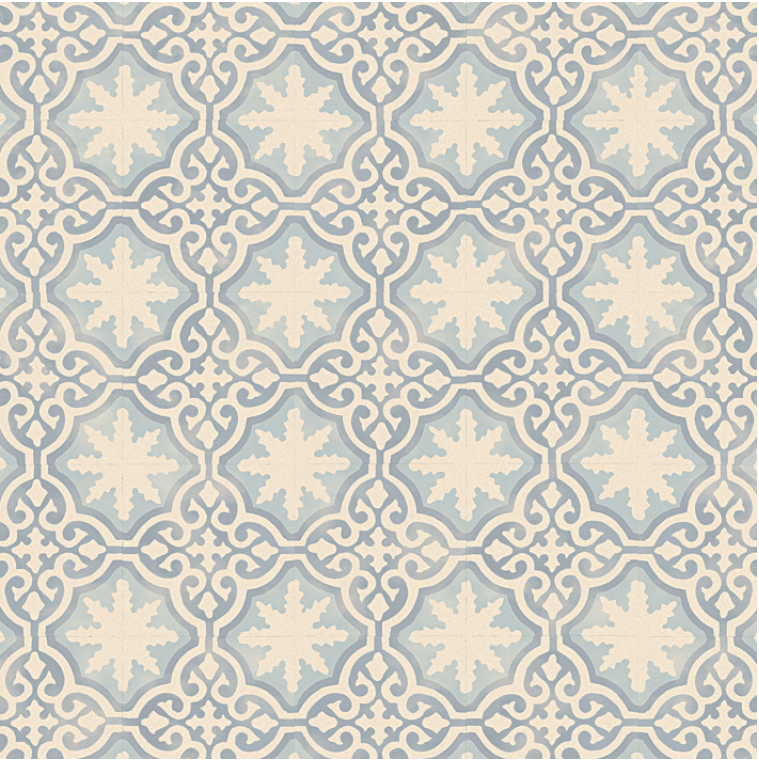
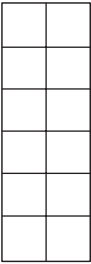
-
S172616 / 1179 x 394 x 8mm
2.32 m² per pack
5 planks per pack





VICTORIAN
TILE

S177161 / 1179 x 394 x 8mm
2.32 m² per pack
5 planks per pack



SYNCRO

AC5 / JOINTGUARD / MICROBEVEL /
INTERPLANK / AQUA-0 / 25 YEARS WARRANTY

A synchronised design that realistically reproduces
the look of reclaimed wood.
Each panel features a rotated plank to one end to
create a striking angular feature.



BOHEME OAK

S172432 / 1180 x 292 x 8mm
2.07 m² per pack
6 planks per pack



ACCESSORIES AND INSTALLATION



DRY KIT
Our laminate floors are suitable for kitchens and bathrooms thanks to our FAUS AQUA - 0 technology, but as an extra precaution to ensure full protection against water, we offer the DRY KIT for use in extreme wet areas. ie shower, entrance, dishwasher/laundry areas, etc...

ACCESSORIES

REF.	NAME	MATERIAL	Length	Width	Thickness	Units / Bag	Bags / Box
S171749	FAUS RADIANT	RECYCLED RUBBER	25 m	1,2 m	2 mm	-	-
S145818	INSTALLATION CLIP	PLASTIC	55 mm	35 mm	-	6	20
S000889	INSTALLATION KIT	-	-	-	-	-	-
M001567	CLICSEAL	SEALANT	-	-	-	1	48
M001574	ALUMINIUM SKIRTING	-	2700	20	15	1	-

WARRANTY*

To ensure the durability of FAUS FLOORING it is essential to carry out the following:

- The installation of a suitable underlay.
- Maintain an expansion gap around the perimeter of the facility and around any fixed objects.
- Daily cleaning with a vacuum or mop. When using a wet mop, this should always be warm and drained.
- Do not use ammonia, bleach or soap products. Use only neutral PH non-abrasive detergent.
- Check installation and maintenance instructions on www.faus.international
- Commercial Use Warranty 5 years.
- Kitchens & Bathrooms Warranty 5 years.



**In accordance with the warranty conditions specified at www.faus.international*

CERTIFICATIONS



FAUS TECHNICAL INFORMATION

DESIGN	REF.	NAME	RF	JG	MB	IP	UM	Length	Width	Thickness	P/B	m ²	Kp
MASTERPIECES Lifetime Warranty*													
CHEVRON													
	S174221	GREY CHEVRON	•	•	•	•		1184.0	293	8	6	2.08	16.21
	S173101	NATURAL CHEVRON	•	•	•	•		1184.0	293	8	6	2.08	16.21
	S176942	CHIC CHEVRON	•	•	•	•	•	1184.0	293	8	6	2.08	16.21
HERRINGBONE													
	S174276	NATURAL HERRINGBONE	•	•	•	•		1184.0	293	8	6	2.08	16.21
	S180192	RIVAU HERRINGBONE	•		•	•	•	1174.4	293	8	6	2.07	16.09
INDUSTRY TILES Lifetime Warranty*													
	S180239	BLACK MARBLE	•	•	•			1188.0	295	8	6	2.10	16.31
	S179677	WHITE MARBLE	•	•				1182.2	601	8	3	2.13	16.57
STONE EFFECTS Lifetime Warranty*													
	S176584	PARQUET STONE	•	•	•	•	•	1183.0	293	8	6	2.08	16.19
RETRO Lifetime Warranty*													
	S177031	VICTORIAN TILE	•	•	•			1179.3	394	8	5	2.32	18.07
	S172616	TRADITIONAL TILE	•	•	•			1179.3	394	8	5	2.32	18.07
	S180147	MOSAIC TILE	•	•	•			1179.3	394	8	5	2.32	18.07
SYNCRO 25 years Warranty*													
	S172432	BOHEME OAK	•	•	•			1180.6	292	8	6	2.07	16.11

PATENTED TECHNOLOGIES

RF: REALFEEL // JG: JOINTGUARD // MB: MICROBEVEL // IP: INTERPLANK // UM: ULTRA MATT

LOGISTIC SPECIFICATIONS*

P/B: PLANKS PER PACK // m² : m² PER PACK // KP: WEIGHT/PACK

* DIMENSIONS AND WEIGHTS ARE NOMINAL, AND WHILST EVERY CARE HAS BEEN TAKEN TO ENSURE THE ACCURACY OF THE INFORMATION AT THE TIME OF PRINTING, PRODUCT SPECIFICATIONS MAY CHANGE AT ANY TIME WITHOUT PRIOR NOTICE. THE PHOTOGRAPHS USED ARE SUBJECT TO THE CONSTRAINTS OF THE PRINTING PROCESS AND ARE NOT TO BE USED FOR MATCHING PURPOSES.

STOCKIST

--