

## Coffee Mate Original 1kg



**EAN**

5011546473376

**Target market(s)**

GB, IE

## Components

### Ingredients

Glucose Syrup

Palm Kernel Oil

Milk Proteins

Stabilisers (E331, E452)

Acidity Regulator (E340)

Emulsifiers (E471, E472e)

Anti-Caking Agent (E170)

Colour: Riboflavin

### Nutrition

	Per 100g	Per 100ml**	Per mug**	% RI*
Energy	2279kJ	77kJ	156kJ	
	546kcal	19kcal	37kcal	2%
Fat	34.4g	1.1g	2.2g	3%
of which: saturates	25.9g	0.8g	1.7g	9%
Carbohydrate	56.9g	1.9g	3.8g	1%
of which: sugars	9.1g	0.3g	0.6g	<1%
Fibre	0.0g	0.3g	0.6g	-
Protein	1.9g	0.1g	0.3g	<1%
Salt	0.88g	0.03g	0.06g	1%

\*Reference Intake of an average adult (8400 kJ/2000 kcal)

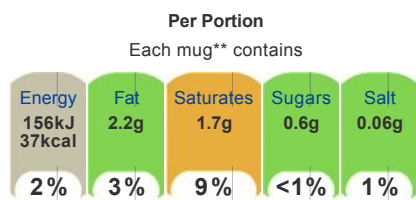
\*\*2 heaped tsp (6.5g) Coffee Mate® + 1 tsp (1.8g) soluble coffee + 200ml water; used as basis for per 100ml

Makes 30 mugs

### Calculated Nutrition

	per 100g	Per 100ml	Per mug
Energy (kJ)	2279	77	156
Energy (kcal)	546	19	37
Fat (g)	34.4	1.1	2.2
of which saturates (g)	25.9	0.8	1.7
Carbohydrate (g)	56.9	1.9	3.8
of which sugars (g)	9.1	0.3	0.6
Fibre (g)	0	0.3	0.6
Protein (g)	1.9	0.1	0.3
Salt (g)	0.88	0.03	0.06

### Front of Pack Nutrition



Energy per 100ml\*\*: 77kJ / 19kcal

Reference Intake of an average adult (8400 kJ/2000 kcal)

\*\*2 heaped tsp (6.5g) Coffee Mate® + 1 tsp (1.8g) soluble coffee + 200ml water; used as basis for per 100ml

## Product Description

### Brand

Coffee Mate

### Manufacturer Brand

Brand - Nestlé

### Features

For creamier tasting coffee  
No hydrogenated vegetable oil  
Low fat when prepared  
Suitable for vegetarians

### Standardised Brand

Brand - Coffee Mate

### Regulated Product Name

Whitener for Hot Beverages

## Marketing

### Company Name

Nestlé UK & Ireland

### Company Address

PO Box 207,  
York,  
YO91 1XY,  
UK.

Nestlé Ireland,  
3030 Lake Drive,  
Citywest Business Campus,  
Dublin 24.

### Brand Marketing

Nestlé® Coffee Mate® Brought to you by the makers of Nescafé® coffee. We love the great flavour and inviting aroma of coffee as much as you do. That's why we have specially tailored our recipe to enhance your everyday coffee moments, making every sip smoother and silkier.

### Other Information

Nutritional Compass®  
®Reg. Trademark of Société des Produits Nestlé S.A.

### Further Description

To get more out of Nestlé® Coffee Mate® visit [www.nescafe.co.uk](http://www.nescafe.co.uk)

### Nutritional Claims

Low fat

## Health & Lifestyle

### Lifestyle

- Low Fat
- Suitable for Vegetarians

### Allergy Advice

Milk - Contains

## Storage & Usage

### Storage Type

#### Type

Ambient

### Preparation and Usage

Add two heaped teaspoons (6.5g) of Nestle® Coffee Mate® to a mug of hot black coffee (one tsp (1.8g) soluble coffee + 200ml water), stir... and enjoy its smooth, silky taste.

### Storage

Store in a cool, dry place  
Best Before End: See Base

## Brandbank Captured Pack Data

### Pack Size

1kg e

### Numeric Size

Numeric Size - 1

### Recycling Info

Can - Not Yet Recycled  
Cap - Widely Recycled  
Foil - Widely Recycled

### Pack Type

Type - Can

### Recycling Scheme

- OPRL

### Usage Count

Number of uses - Servings

30

### Usage Other Text

Makes 30 mugs

## Customer Services

### Manufacturers Address

PO Box 207,  
York,  
YO91 1XY,  
UK.

Nestlé Ireland,  
3030 Lake Drive,  
Citywest Business Campus,  
Dublin 24.

### Return To

Contact us Free  
0800 58 57 59 (UK)  
00800 6378 5385 (ROI)  
www.nestle.co.uk  
PO Box 207,  
York,  
YO91 1XY,  
UK.

Nestlé Ireland,  
3030 Lake Drive,  
Citywest Business Campus,  
Dublin 24.

### Telephone Helpline

0800 58 57 59 (UK)  
00800 6378 5385 (ROI)

### Web Address

www.nestle.co.uk

## Extended Data

### Description Breakdown

Variant - Original



**INGREDIENTS:** Glucose Syrup, Palm Kernel Oil, Milk Proteins, Stabilisers (E331, E452), Acidity Regulator (E340), Emulsifiers (E471, E472e), Anti-Caking Agent (E170), Colour: Riboflavin.

NUTRITION INFORMATION TYPICAL VALUES	Per 100g	Per 100ml**	Per mug**	% RI*
Energy	2279kJ 546kcal	77kJ 19kcal	156kJ 37kcal	2%
Fat	34.4g	1.1g	2.2g	3%
of which: saturates	25.9g	0.8g	1.7g	9%
Carbohydrate	56.9g	1.9g	3.8g	1%
of which: sugars	9.1g	0.3g	0.6g	<1%
Fibre	0.0g	0.3g	0.6g	-
Protein	1.9g	0.1g	0.3g	<1%
Salt	0.88g	0.03g	0.06g	1%

\*Reference Intake of an average adult (8400 kJ/2000 kcal).  
\*\*2 heaped tsp (6.5g) COFFEE MATE® + 1 tsp (1.8g) soluble coffee + 200ml water; used as basis for per 100ml. Makes 30 mugs.

