

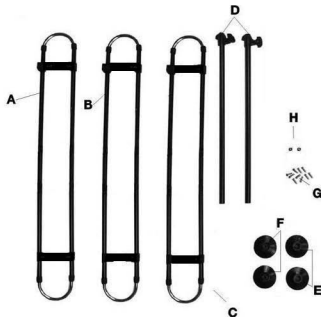
ASSEMBLY

The dog guard must be assembled as shown in the diagram below.



PACK CONTENTS

- A. Upper cross bars
- B. Middle cross bars
- C. Lower cross bars
- D. Telescopic legs
- E. 2 Rubber tops
- F. 2 Rubber feet
- G. 6 Phillips screws
- H. 2 Washers

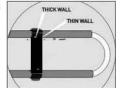


Proceed as follows to assemble the dog guard.

- Lay out cross bars (A & B & C) in front of you.
- Slot the telescopic legs (D) through the plastic fittings.

- Using a Phillips screwdriver, drive the screws supplied into the holes provided in the plastic fittings as illustrated.

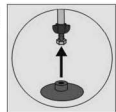
- Do not tighten the screws fully at this stage.



- Fix the rubber tops to the top of each telescopic leg.

- A bolt is located at the end of the telescopic section. Extend the bolt approximately 2-3 centimetres and fit the rubber foot over the bolt as illustrated.

Tip: The rubber foot fits very tightly onto the bolt. You may wish to soften the rubber foot slightly by immersing it in warm water first.

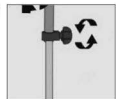


INSTALLATION

After completing assembly as described above the dog guard can be installed in your car.

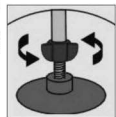
- Remove the parcel shelf.

- Loosen the telescopic leg fixing screws and extend the telescopic section so that the dog guard fits your car's boot between the roof and the floor. Subsequently re-tighten the fixing screws.

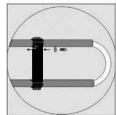


- The dog guard must be wedged very tightly between your car's roof and the floor.

- To achieve a tight fit, rotate the plastic grips at the bottom of the telescopic leg section anti-clockwise as illustrated. This drives out the bolt and forces the rubber foot against the floor.



- Now adjust the position of the cross bars to suit car. Tighten the screws in the plastic fittings.



RAC
the driving people