

**Assorted Biscuits in Merry Christmas Wreath Tin  
400g from Farmhouse Biscuits.**

**Ingredients**

Flour (**W**heat Flour, Calcium, Niacin, Iron, Thiamin), Vegetable Oils (Palm, Rapeseed), Sugar, Dark Chocolate (5%) (Cocoa Mass, Sugar, Cocoa Butter, Emulsifier (**S**oya Lecithin), Natural Vanilla Flavouring), Rice Flour, Cocoa Powder (2%), Cornflour.

# Forest Feast Salted Dark Chocolate Almond

Dark Chocolate (60%) (Cocoa Mass, Sugar, Cocoa Butter, Emulsifier (**Soya** Lecithin), Natural Vanilla Flavouring), **Almonds** (39%), Salt, Cocoa Powder, Dark Chocolate contains Cocoa Solids 55% minimum

For allergens, see ingredients in **bold**.

Typical values	Per 100g
Energy	2356kj
	566kcal
Fat	43g
of which saturates	15g
Carbohydrate	31g
of which sugars	28g
Fibre	7.6g
Protein	12g
Salt	0.72g

Eden Range Box of Truly Handmade Shortbread Biscuits with Earl Grey Tea - 125g

**INGREDIENTS:** Flour (**Wheat** Flour (Gluten), Calcium, Niacin, Iron, Thiamin), Butter (**Milk**, Salt), Sugar, Ground Rice, Vegetable Oils (Segregated Sustainable Palm Oil, Rapeseed Oil), Bergamot Oil (0.2%), Black Tea (0.1%).

**ALLERGY ADVICE:** For allergens, see ingredients in **bold**. Also may contain nuts, soya and egg. Suitable for vegetarians.

**NUTRITIONAL INFORMATION UK/EU:**

**VALEUR NUTRITIVE/NÄHRWERTINFORMATIONEN:**

**TYPICAL VALUES / VALEURS MOYENNES/DURCHSCHNITTliche WERTE**

**Energy/Énergie/Energie**

**Per 100g**  
2220kJ/531kcal

**Fat/Matières Grasses/Fett**

30.4g

**of which Saturates/dont saturés/davon gesättigte Fettsäuren**

18.6g

**Carbohydrate/Glucides/Kohlenhydrate**

58.5g

**of which Sugars/dont sucres/davon Zucker**

18.9g

**Protein/Protéines/Eiweiß**

5.0g

**Salt/Sel/Salz**

0.50g

Forest Feast Heather Honey Cashews & Peanuts, 120g
--

Peanuts (40%), Cashew Nuts (40%), Sugar, Rapeseed Oil, Glucose Syrup, Honey, Sea Salt, Heather Honey (1%)

For allergens, see ingredients in **bold**.

Typical values	Per 100g
Energy	2158kJ
	515kcal
Fat	37.2g
of which saturates	3.6g
Carbohydrate	31.5g
of which sugars	18.8g
Fibre	4.1g
Protein	17.4g
Salt	0.72g



Loison Classic Panettone, 1000g
---------------------------------

**TYPICAL VALUES****PER 100G****Energy**

2356kj

566kcal

**Fat**

43g

of which saturates

15g

**Carbohydrate**

31g

of which sugars

28g

**Fibre**

7.6g

**Protein**

12g

**Salt**

0.72g

Ingredients: WHEAT flour, Sultanas, Candied peels of oranges from Sicily and lemon from Calabria [Orange and lemon peels in varying proportion, Glucose-fructose syrup, Sugar, Concentrated lemon juice], EGGS, BUTTER, Sugar, Natural sourdough yeast, EGG yolk, mono and diglycerides of vegetable fat acids, Wildflower honey from Sicily, MILK, CREAM, sea salt, Cocoa butter, Natural Mananara vanilla from Madagascar, Natural flavouring

SKU:	979892
------	--------

Allergens	WHEAT, MILK, EGG
-----------	------------------

Eden

## Range Box of Truly Handmade Shortbread Biscuits with Spanish Clementine - 125g

**INGREDIENTS:** Flour (**Wheat** Flour (Gluten), Calcium, Niacin, Iron, Thiamin), Butter (**Milk**, Salt), Sugar, Ground Rice, Vegetable Oils (Segregated Sustainable Palm Oil, Rapeseed Oil), Bergamot Oil (0.2%), Black Tea (0.1%).

**ALLERGY ADVICE:** For allergens, see ingredients in **bold**. Also may contain nuts, soya and egg. Suitable for vegetarians.

### Nutrition Facts

<b>Serving Size</b>	100 g
<b>Energy (kcal)</b>	504.00 kcal
<b>Fat</b>	25.6 grams g
<b>of which:</b>	
<b>- Saturates</b>	15.7 grams g
<b>Carbohydrate</b>	61.9 grams g
<b>of which:</b>	
<b>- Sugars</b>	17.4 grams g
<b>Protein</b>	5.7 grams g

SCOTTISH  
**OAT**  
**CRUMBLES**  
COLLECTION

**INGREDIENTS:** **Wheat** flour (with calcium carbonate, iron, niacin, thiamin), Vegetable oils (palm, rapeseed), Sugar, **Oats** (32%), Golden syrup, Ginger crush (5%) (stem ginger, sugar, water), Ground Ginger, Raising agents (diphosphates, sodium carbonates), Salt, Emulsifier (polyglycerol esters of fatty acids), Flavourings, Colour (curcumin, annatto).

**Allergen advice:** For Allergens, including Cereals containing gluten, see ingredients in bold. May also contain tree nuts.

**NUTRITIONAL INFORMATION**

<b>Nutritional Info:</b>	<b>per 100g</b>
Energy:	2152 kJ / 515 kcal
Fat:	26.7g
as Saturates:	8.6g
Carbohydrates:	62.3g
as Sugars:	29.4g
Protein:	5.0g
Salt:	0.9g



**Storage Instructions:** Store in a cool, dry place. Once opened, keep in an airtight container.  
**Guarantee:** If you are not satisfied with your purchase, please return the product and packaging stating where and when it was purchased.

**150g e 5.3oz**

**Nutritional Information:**  
**Cranberry & Apple Chutney - 312g**

Typical Values	Per 100g
Energy	699kj/164kcal
Fats	0.1g
of which saturates	0.0g
Carbohydrate	40.7g
of which sugars	38.6g
Protein	0.5g
Salt	0.2g

**Ingredients:** Cranberries (23%), Sugar, Apple (21%),  
Onion, Red Wine Vinegar, Sultanas, Salt, Colour: Black  
Carrot Extract, Mixed Spice.  
No Artificial Colours or Preservatives.  
**Best Before End:** See Base. Refrigerate once opened.

Mrs Darlington's Christmas Preserve, 340g

## Large New English Tea Caddy, 240Bags

### The Details

DIMENSIONS	14 cm x 14 cm x 23 cm
CONTENTS	Black Tea
WEIGHT	480 g
STORAGE INSTRUCTIONS	Store in a cool dry place
COUNTRY OF ORIGIN	Sri Lanka
FORMAT	240 Traditional Teabags
REGION	Ceylon
BLEND	English Breakfast
SPECIALITY	Vegetarian, Vegan, Sugar-Free, Gluten-Free
CAFFEINE CONTENT	Caffeinated - 2.5% (5mg per serving)
SERVING SIZE	2 g
OTHER	Our teabags contain only 100% unbleached pulp, and are entirely plastic-free.
EAN/UPC	5013111005296
SKU	TT42





## 165G e DARK MINT HONEYCOMB CRISPS

STORE IN A COOL DRY PLACE AWAY  
FROM DIRECT SUNLIGHT.

If you have any queries or comments  
regarding this product, please contact  
our Quality Assurance Department.

T: +44 (0)1756 792531

E: [sales@whitakerschocolates.com](mailto:sales@whitakerschocolates.com)

**YOUR STATUTORY RIGHTS ARE  
NOT AFFECTED**

Whitakers Chocolates Ltd, 85 Keighley  
Road, Skipton, North Yorkshire, BD23  
2NA | [www.whitakerschocolates.com](http://www.whitakerschocolates.com)

Ingredients: Dark Chocolate 89% (cocoa mass,  
sugar, cocoa butter, emulsifier: **SOYA** lecithin),  
Sugar, Glucose Syrup, Peppermint Oil 0.3%,  
Raising Agent: sodium bicarbonate.

Dark Chocolate contains:  
Cocoa solids 55% minimum.

For Allergens see ingredients in **BOLD  
CAPITALS**. Also, may contain milk & nuts.

Nutritional Information:	Per 100g	Per Chocolate
Energy	2101KJ/503Kcal	136KJ/32Kcal
Fat	25.2g	1.6g
of which saturates	15.4g	1.0g
Carbohydrate	59.5g	3.8g
of which sugars	55.4g	3.6g
Fibre	7.0g	0.5g
Protein	5.9g	0.4g
Salt	0.12g	trace



The Fairtrade cocoa may be  
mixed with non-certified cocoa,  
on a mass balance basis.  
Visit [info.fairtrade.net/sourcing](http://info.fairtrade.net/sourcing)



Best Before End & Lot Code

MAR 2026  
4068



5 010972 008831 >



GREAT TASTE AWARD WINNING  
Nine Square Dried Fruit Box



**HAND PACKED  
IN BRITAIN**

INGREDIENTS: dried mixed fruit selection (in varying proportions), apricot (apricot, preservative SULPHUR DIOXIDE), mango (mango, sugar, citric acid, preservative SODIUM METABISULPHITE), strawberry (strawberry, preservative SULPHUR DIOXIDE, E129, antioxidants(E300), flavouring), pineapple (pineapple, sugar, citric acid, preservative SULPHUR DIOXIDE), GREAT TASTE GOLD STAR AWARD WINNING orange (orange, cane sugar, citric acid, preservative: SULPHUR DIOXIDE, E223), cranberry (cranberry, sugar, sunflower oil), kiwi (kiwi, sugar, preservative SULPHUR DIOXIDE). FOR ALLERGENS SEE INGREDIENTS IN CAPITALS  
BEST BEFORE 01.04.2024 WEIGHT 650g Produce of more than one country

typical value per 100g - energy kj 1347, Energy Kcal 322, fat 0.5g, of which is saturate 0.08g, carbohydrate 71.5g, of which is sugar 63g, fibre 9.5g, protein 2.7g, salt 0.02g

this factory handles sesame, peanuts & other tree nuts \* may contain fruit tones\* natural white sugar can form on the fruit \*Caution:E129 may have an effect on activity & attention in children \*store in a cool dry place (15-18oC) suitable for kosher, halal, gluten free, vegan & vegetarian diets

Hand Packed by

Walnut Tree WD6 2BT

Tel: 020 8236 0648

[www.walnut.gifts](http://www.walnut.gifts)

Price: 9.95 SBF 38.23



6 38170 77991 6

Recycle info. Paper: lid,  
contents label PET(1):  
clear window, film  
recycle symbol, gold card

CARTWRIGHT  
ENGLAND  
& BUTLER

## CHRISTMAS PUDDING

### INGREDIENTS

Vine Fruits (16.7%) (Sultanas, Currants, Raisins, Sunflower Oil ), **ALMONDS (NUTS)**(11.9%), Cider (10.5%), Brown Sugar, Mixed Peel (Orange Peel, Glucose-Fructose Syrup, Sugar, Lemon Peel, Acidity Regulator: Citric Acid), Diced Apricots (Apricots, Rice Flour, Preservative: **SULPHUR DIOXIDE**), **WALNUTS (NUTS)**(6.3%), Whole **EGG**, Glacé Cherries (Cherries (48%), Glucose-Fructose Syrup, Sugar, Acidity Regulator: Citric Acid, Preservative: Potassium Sorbate; Colour: Erythrosine), Salted Butter (**MILK**, Salt), Golden Syrup, **WHEAT** Flour (Calcium, Iron, Niacin, Thiamine), Breadcrumbs (**WHEAT** Flour (Calcium, Iron, Niacin, Thiamine), Water, Salt, Yeast), Vegetable Suet (Vegetable Fat Blend (Palm Oil), Rice Flour), Black Treacle (Invert Sugar Syrup, Molasses), Rum (0.6%), Brandy (0.6%), Colour: Caramel, Mixed Spice, Cinnamon.

### CONTAINS ALCOHOL

For Allergens see ingredients in **bold**. May contain traces of other Nuts and Soya.

Once opened, store in a cool and dry place.

To Microwave: Pierce film lid in several places and cook on full power for two and a half minutes.

To Steam or Boil: Pierce film lid, place in a steamer or saucepan filled with water to half the depth of the pudding bowl and cook for 2 hours. Do not boil dry.

### NUTRITIONAL INFORMATION (PER 100g)

Energy kJ/kCal	Fat	of which Saturates	Carbo- hydrate	of which Sugars	Fibre	Protein	Salt
1512/362	19.0g	5.6g	43.0g	34.8g	1.3g	5.4g	0.22g



## Monty Bojangles Magnificent Dusted Truffle Selection, 248g

**CHOC CY  
SCOFFY**

**CARAMEL  
HAZE**

**SCRUPLE  
NUTTY**

**BERRY  
BUBBLY**

**POPCORN  
CAROUSEL**

**FLUTTER  
SCOTCH**

**COOKIE  
MOON**

**COCOA NIB  
NIGHTS**

**ORANGE  
ANGELICAL**

**AN ASSORTMENT OF COCOA DUSTED TRUFFLES, INCLUDING THE FOLLOWING VARIETIES: CHOCOLATEY, BUTTERSCOTCH CHIPS, CANDIED ORANGE PEEL, COOKIE PIECES, HAZELNUT CHIPS, RASPBERRY & POPPING CANDY, SALTED POPCORN FLAVOUR & CRISPY WAFER PIECES, COCOA NIBS AND CARAMELISED HAZELNUT CHIPS & CARAMEL FLAVOUR.**

**INGREDIENTS:**  
VEGETABLE OILS (COCONUT, RSPO MB PALM KERNEL), SUGAR, FAT REDUCED COCOA POWDER, WHEY POWDER (**MILK**), COCOA POWDER, COOKIE PIECES (1%) (CHOCOLATE CHIPS (COCOA MASS, SUGAR, EMULSIFIER [**SOYA LECITHIN**], NATURAL FLAVOURING), FLOUR (**WHEAT**), SUGAR, CONCENTRATED BUTTER [**MILK**], SKIMMED **MILK** POWDER, **BARLEY MALT**, SALT), TOASTED **HAZELNUT** CHIPS (1%), COCOA BEAN NIBS (0.5%), CANDIED ORANGE PEEL (0.5%) (ORANGE PEEL, GLUCOSE-FRUCTOSE SYRUP, CANE SUGAR, LEMON JUICE), CARAMELISED **HAZELNUT** PIECES (0.5%) (**HAZELNUTS**, SUGAR), BUTTERSCOTCH CHIPS (0.5%) (SUGAR, GLUCOSE SYRUP, CREAM [**MILK**], SKIMMED **MILK** POWDER, SALTED BUTTER (BUTTER [**MILK**], SALT), SEA SALT), POPPING CANDY (0.5%) (SUGAR, LACTOSE [**MILK**], COCOA BUTTER, GLUCOSE SYRUP, CARBON DIOXIDE), EMULSIFIER (**SOYA LECITHIN**), WAFER PIECES (0.5%) (**WHEAT FLOUR**, SUGAR, CONCENTRATED BUTTER [**MILK**], SKIMMED **MILK** POWDER, **BARLEY MALT**, SALT), NATURAL FLAVOURING, SALT, FLAVOURING.

**ALLERGY ADVICE:**  
FOR ALLERGENS, INCLUDING CEREALS CONTAINING **GLUTEN**, SEE INGREDIENTS IN **BOLD**. MAY CONTAIN TRACES OF **EGG**, OTHER **NUTS** & **SESAME**. SUITABLE FOR VEGETARIANS.

NUTRITION FACTS TYPICAL VALUES	Per 100g
Energy	2462 kJ 593 kcal
Fat	44g
of which saturates	37g
Carbohydrate	42g
of which sugars	39g
Protein	4.1g
Salt	0.19g

**FOR THE GIDDILY CURIOUS...**  
montybojangles.com  
info@montybojangles.com  
f t i s p  
@montybojangles

THESE TRUFFLES ARE BEST PLACED IN A COOL DRY PLACE, OUT OF DIRECT SUNLIGHT.

THE MONTY BOJANGLES CO. LTD, LEGION HOUSE, 75 LOWER ROAD, KENLEY, CR8 5NH.

MONTY BOJANGLES EUROPE LTD, THE MOUNT, 2 WOODSTOCK LINK, BELFAST, BT6 8DD.  
TEL: +44(0)20 8668 5261

RECYCLING:  
BOX - PLEASE RECYCLE.  
WRAPPERS - PLEASE RECYCLE AT LARGE SUPERMARKETS WITH SOFT PLASTICS.

**BEST BEFORE END:**  
JAN 2026  
LS25058-07161

**Net Weight 248ge**

5 060980 960881 >



# CARTWRIGHT ENGLAND & BUTLER

A classic Cartwright & Butler buttery shortbread recipe with orange & whole dried cranberry pieces, topped with cinnamon sugar for a delicious, festive treat.

## SPICED ORANGE & CRANBERRY SHORTBREADS

### INGREDIENTS

**Wheat** Flour (Calcium, Iron, Niacin, Thiamine), Salted Butter (29%) (**Milk**, Salt), Sugar, Maize Starch, Cranberries (6%) (Cranberry, Cane Sugar, Sunflower Oil), Cinnamon, Natural Flavouring: Orange Oil (1%).

For allergens, see ingredients in **bold**. May contain traces of Nuts.

### NUTRITIONAL (PER 100g)

Energy kJ/kCal	Fat	of which Saturates	Carbo- hydrate	of which Sugars	Fibre	Protein	Salt
1917/459	23.3g	14.8g	60.2g	24.0g	2.2g	4.0g	0.5g



VEGETARIAN

200g e



CARTON





Monty Bojangles Orange Angelical Truffles, 100g

**Best before end:**

NOV 2025  
L224284-06805 100g

FOR THE GIDDILY CURIOUS:  
email: [info@montybojangles.com](mailto:info@montybojangles.com)  
or visit our website: [montybojangles.com](http://montybojangles.com)

THESE ORANGE ANGELICALS ARE BEST  
PLACED IN A COOL DRY PLACE  
AWAY FROM FLYING FISH

5 060260 389791

**Monty Bojangles Company Ltd.**  
LEGION HOUSE, 75 LOWER ROAD,  
KENLEY, CR8 5NH  
MONTY BOJANGLES EUROPE LTD,  
THE MOUNT, 2 WOODSTOCK LINK,  
BELFAST, BT6 8DD.  
TEL: +44(0)20 8668 5261

**Nutrition facts**  
Typical values  
Per 100g

2428 kJ	energy
584 kcal	
43g	fat
37g	of which saturates
42g	carbohydrate
40g	of which sugars
3.9g	protein
0.20g	salt

**COCOA DUSTED TRUFFLES  
WITH CANDIED ORANGE PEEL**

INGREDIENTS: VEGETABLE OILS (COCONUT, PALM  
KEHNET), SUGAR, FAT REDUCED COCOA POWDER,  
WHEY POWDER (FROM MILK), CANDIED ORANGE  
PEEL (6%) (ORANGE PEEL, GLUCOSE-FRUCTOSE  
SYRUP CANE SUGAR, LEMON JUICE), COCOA POWDER,  
EMULSIFIER (SOYA LECITHIN), NATURAL FLAVOURING.  
**ALLERGY ADVICE:** FOR ALLERGENS, SEE INGREDIENTS  
IN BOLD. MAY CONTAIN TRACES OF **BARLEY, EGGS,  
NUTS, SESAME AND WHEAT.**  
SUITABLE FOR VEGETARIANS.

# CRANBERRY & ORANGE MINI MINCE PIES

## INGREDIENTS

Butter Pastry (56%): **Wheat** Flour (Calcium, Iron, Niacin, Thiamin),  
Butter (**Milk**), Sugar, Salt.

Mincemeat Filling (40%): Sugar, Vine Fruit (Sultanas & Raisins), Cranberries (11%),  
Apple, Apple Puree, Water, Vegetable Suet (Palm Oil, Sunflower Oil, Rice Flour),  
Dried Cranberries (Cranberries, Cane Sugar, Sunflower Oil), Modified Starch,  
Cut Mixed Peel (Orange Peel, Glucose-Fructose Syrup, Lemon Peel, Sugar,  
Acidity Regulator: Citric Acid), Orange Oil (1%), Mixed Spice, Acetic Acid,  
Colour: Caramel; Preservative: Potassium Sorbate;  
Natural Flavouring; Whole **Almond**.

For allergens, see ingredients in **bold**. May contain other Nuts.

## NUTRITIONAL (AVERAGE PER 100g)

Energy kJ/kCal	Fat	of which Saturates	Carbo- hydrate	of which Sugars	Fibre	Protein	Salt
1633/390	18.1g	6.4g	56g	31g	2.4g	3.8g	0.3g

ONCE OPENED STORE IN A COOL, DRY PLACE,  
IN AN AIRTIGHT CONTAINER.

**CARTWRIGHTANDBUTLER.CO.UK**



VEGETARIAN



CARTON

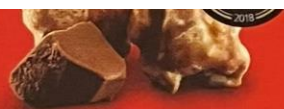
MADE IN THE UK FOR CARTWRIGHT & BUTLER  
PO BOX 298 BEVERLEY HU17 6FG UK  
CARTWRIGHT & BUTLER, JOYCE HOUSE, 21-23 HOLLES  
STREET, DUBLIN 2, IRELAND

CARTWRIGHT & BUTLER® IS A REGISTERED TRADEMARK

120g e

Cartwright & Butler Mince Pies, 120g





### SALTED CARAMEL

Sea Salted Caramel Gourmet  
Popcorn with Belgian Milk  
Chocolate



### POP N CHOC

Chocolate Caramel Gourmet  
Popcorn with Belgian Milk  
Chocolate



### CHRISTMAS PUDDING

Festive Spiced Caramel  
Gourmet Popcorn

FOR ALLERGENS, PLEASE SEE INGREDIENTS IN BOLD. MAY CONTAIN THE OCCASIONAL UNPOPPED KERNEL. MADE IN A FACILITY WHERE NUTS, PEANUTS, MILK, SOYA AND GLUTEN ARE PRESENT.

#### SALTED CARAMEL

INGREDIENTS: POPPED CORN (23%), SUGAR, BUTTER (CONTAINS **MILK**), **MILK CHOCOLATE** (15%) (CONTAINS: SUGAR, COCOA BUTTER, WHOLE **MILK** POWDER, COCOA MASS, EMULSIFIER: **SOYA** LECITHIN, NATURAL VANILLA FLAVOURING), GLUCOSE SYRUP, GOLDEN SYRUP, RAPESEED OIL, SEA SALT (1%), NATURAL FLAVOURING, EMULSIFIER: **SOYA** LECITHIN. RAISING AGENT: BICARBONATE OF SODA.

#### POP 'N' CHOC

INGREDIENTS: POPPED CORN (23%), SUGAR, BUTTER (CONTAINS **MILK**), **MILK CHOCOLATE** (8%) (CONTAINS: SUGAR, COCOA BUTTER, WHOLE **MILK** POWDER, COCOA MASS, EMULSIFIER: **SOYA** LECITHIN, NATURAL VANILLA FLAVOURING), GLUCOSE SYRUP, GOLDEN SYRUP, COCOA POWDER (6%), RAPESEED OIL, SEA SALT, EMULSIFIER: **SOYA** LECITHIN. RAISING AGENT: BICARBONATE OF SODA.

#### CHRISTMAS PUDDING

INGREDIENTS: POPPED CORN (24%), SUGAR, GLUCOSE SYRUP, GOLDEN SYRUP, COCONUT OIL, MIXED SPICE (CINNAMON, CORIANDER, GINGER, NUTMEG, CLOVES), RAPESEED OIL, NATURAL FLAVOURING SALT, EMULSIFIER: **SOYA** LECITHIN. RAISING AGENT: BICARBONATE OF SODA.

#### PER 100G

	SALTED CARAMEL	POP N CHOC	CHRISTMAS PUDDING
Energy	498kcal/2082KJ	494kcal/2067KJ	365kcal/1529KJ
Fat	24.5g	23.4g	11.4g
Of which Saturates	14.9g	14.3g	5.9g
Carbohydrates	61.7g	63.8g	60.4g
Of which sugars	42.6g	40.0g	37.2g
Protein	4.2g	5.2g	3.3g
Salt	1.1g	0.8g	0.5g

#### Find us

UK Popcorn Shed Ltd, 30 City  
Road, London, EC1Y 2AB, UK

Northern Ireland Popcorn  
Shed Ltd, Moat House, 54  
Bloomfield Avenue, Belfast,  
BT5 5AD, Northern Ireland

Established in a shed  
in Great Britain.



Visit us at:  
**@popcornshed**  
[www.popcornshed.com](http://www.popcornshed.com)

NET WEIGHT

72g e



There's nothing  
CORN-Y about  
recycling

SEE BASE FOR BEST BEFORE

STORE IN A COOL PLACE



## Sweet Cured Ham & Pickle

### Typical Nutritional Values

Per 100g	
Energy	2126.8kj 507.8kcal
Fat	23.9g
of which saturates	5.4g
Carbohydrate	66.4g
of which sugars	3.2g
Protein	6.8g
Salt	1.4g

Ingredients Potatoes, Sunflower Oil, Dextrose, Sugar, Salt, Spirit Vinegar, Acetic Acid, Natural Flavouring, yeast Extract, Onion, Ginger, Garlic Powder, White Pepper, Natural Flavouring, Paprika Extract, Dried British Wiltshire Cured Ham Stock, Made from Wiltshire Cured British Pork, Salt, Onion, Sunflower Oil, Smoke Flavouring

For allergens see ingredients in **bold.**

Not Suitable for vegetarians but gluten free

95 grams e (GF)

Best Before 18/06/2023



Cherubini Tin Amaretti, 200g

IT - Biscotti alle mandorle. Ingredienti: farina di frumento, zucchero, mandorle 19 %, uova, grassi vegetali raffinati (palma e girasole), zucchero invertito, latte, aromi, agenti lievitanti (E500, E503, E450), emulsionante (E471), addensante (E415), sale. Può contenere arachidi, soia, senape e altra frutta a guscio. Conservare in luogo fresco ed asciutto.

GB - Biscuits with almonds. Ingredients: wheat flour, sugar, almonds 19 %, eggs, refined vegetable fats (palm and sunflower), invert sugar, milk, flavourings, raising agent (E500, E503, E450), emulsifier (E471), thickener (E415), salt. May contain peanuts, soybeans, mustard and other nuts. Store in a cool dry place.

D - Gebäck mit Mandeln. Zutaten: Weichweizenmehl, Zucker, Mandeln 19 %, Eier, pflanzliche Fette (Palmöl, Sonnenblumenöl), Invertzucker, Milch, Aromen, Backtriebmittel (E500, E503, E450), Emulgator (E471), Verdickungsmittel (E415), Salz. Kann Erdnüssen, Sojabohnen, Senf und Schalenfrüchten enthalten. Kühl und trocken lagern.

Valori nutrizionali medi per 100g/ Average nutritional values per 100g/ Durchschnittliche Nährwerte je 100g

Energia/ Energy/ Energie	1851 kJ / 440 kcal
Grassi/ Fat/ Fett	14 g
di cui acidi grassi saturi/ of which saturates/ davon gesättigte Fettsäuren	2,8 g
Carboidrati/ Carbohydrate/ Kohlenhydrate	66 g
di cui zuccheri/ of which sugars/ davon Zucker	35 g
Fibre/ Fibre/ Ballaststoffe	3,3 g
Proteine/ Protein/ Eiweiß	10 g
Sale/ Salt / Salz	0,10 g

Da consumarsi preferibilmente entro il: vedi sigillo /  
Best before: see the seal / Mindestens haltbar bis:  
siehe das Siegel

Prodotto e confezionato da:/ Produced and packed  
by:/ Hergestellt und verpackt von:

**DOLCIARIA GADESCHI S.p.A.**

Str. Prov. 26, Km.5 - 26010 - Corte de' Frati (CR) - Italia.  
[www.gadeschi.it](http://www.gadeschi.it)

Importer: Trustin Foods UK Ltd  
PO Box 355  
Witney  
OX28 6WY



200g e NET WT 7.05 OZ



## Chocolate Chip & Orange Biscuits

Ingredients: **Wheat flour** (wheat flour, calcium carbonate, iron, niacin, thiamin), vegetable oil (palm, rapeseed, water, salt, natural flavouring), sugar, plain chocolate chips (10%) (sugar, cocoa mass, cocoa butter, emulsifier: **soya** lecithin, natural flavouring), **oats**, partially inverted sugar syrup, raising agents: ammonium bicarbonate, disodium diphosphate, sodium bicarbonate; **milk** powder, natural orange flavouring, salt.

Plain chocolate chips contain: cocoa solids 39% minimum.

For allergens, including cereals containing gluten, see ingredients in **bold**. Not suitable for nut and sesame allergy sufferers: may contain egg, mustard, peanut, and other gluten sources (spelt, rye, barley).

Suitable for vegetarians.

Storage Conditions: Store in a cool dry place avoiding direct sunlight. Once opened, keep in an airtight container and consume within 30 days.

For Best Before: See base.

### Nutritional Information

Typical Values	Per 100g
Energy (kJ/kcal)	2166/518
Fat (g):	28
Of which saturates	11
Carbohydrate (g):	61
Of which sugars	31
Protein (g)	5.4
Salt (g)	1.10



9-0988-15-100-00



150g e

by Grandma Wild's Produced in England



# FARMHOUSE BISCUITS

FINEST TRADITIONALLY MADE BISCUITS

## SALTED CARAMEL BISCUITS

**Sweet Biscuits with Salted Caramel Pieces**

INGREDIENTS: Flour (**Wheat** Flour, Calcium, Niacin, Iron, Thiamin), Vegetable Oils (Sustainable Palm, Rapeseed), Sugar, Salted Caramel Pieces (10%) (Sugar, Glucose Syrup, Salted Butter (**Milk**, Salt), Coconut Oil, Salt, Natural Flavouring, Colour: Plain Caramel), Natural Flavouring, Salt.

ALLERGY ADVICE: For allergens, including cereals containing gluten, see ingredients in **bold**. May also contain Egg, Tree Nuts and Soya.

Suitable for Vegetarians. Not suitable for Vegans.

STORAGE: Store in a cool, dry place. Once opened, keep in an airtight container and consume within 2 weeks.

Best Before: See Base.

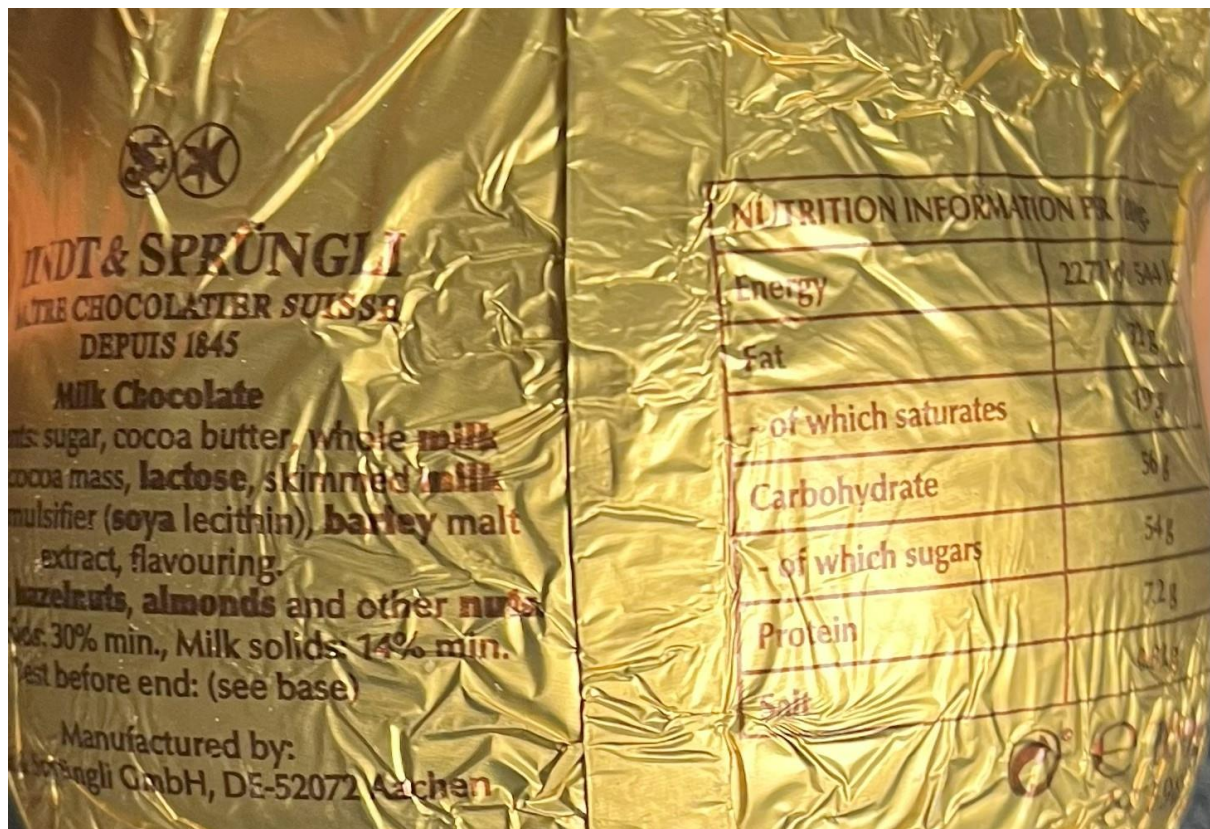
### Nutritional Information:

Typical Values	Per 100g
Energy	2242kJ / 536kcal
Fat	27.0g
of which Saturates	9.4g
Carbohydrate	67.4g
of which Sugars	24.4g
Protein	4.7g
Salt	1.19g



Farmhouse Biscuits Holly Berry Tube 150g

Lindt Milk Chocolate Bear, 100g







**LINDT & SPRÜNGLI**  
MAÎTRE CHOCOLATIER SUISSE  
DEPUIS 1845

Milk chocolate truffles with a smooth melting filling

Ingredients: sugar, vegetable fat (coconut, palm kernel), cocoa butter, cocoa mass, whole milk powder, skimmed milk powder, lactose, anhydrous milk fat, emulsifier (soya lecithin), barley malt extract, flavourings.

May contain hazelnuts and other nuts.

Milk chocolate contains:

Cocoa solids: 32% min.,

Milk solids: 21% min.

Store in a cool and dry place.

Wherever and whenever you take a LINDOR moment, it just seems to make life feel so much more sublime.

When you unwrap LINDOR and break its delicate chocolate shell, the irresistibly smooth filling starts to melt, gently carrying you away in a moment of bliss.

LINDOR, created by the Lindt Master Chocolatiers. Passion and love for chocolate since 1845.



287g e

HIGHLY MELTABLE · KEEP COOL

**NUTRITION INFORMATION  
PER 100g:**

Energy	2587 kJ / 623 kcal
Fat	47 g
- of which saturates	34 g
Carbohydrate	44 g
- of which sugars	42 g
Protein	5.0 g
Salt	0.17 g

**QUALITY GUARANTEE**  
CHOCOLADEFABRIKEN LINDT & SPRÜNGLI AG

MANUFACTURED BY:  
LINDT & SPRÜNGLI SPA  
21056 INDUNO OLONA (VA) ITALY

LINDT SUSTAINABILITY  
[www.lindt.com](http://www.lindt.com)



Distributed by:  
Lindt & Sprüngli (UK) Ltd.,  
United Kingdom: 4 New Square,  
Feltham, Middlesex, TW14 8HA.  
Republic of Ireland:  
PO BOX 13038, Dublin 18.



Best before:

**L164440**  
**30.09.2025**

Somerset Cheddar  
and Shallot flavour potato crisps

100g e

Typical Values Per 100g: Energy 2018kJ; Energy 482kcal  
Fat 28g; of which saturates 2.9g; Carbohydrate 52g; of which  
sugars 3.2g; Fibre 4.4g; Protein 7.3g; Salt 1.78g  
Serving suggestion 30g. 145kcal per 30g Serving

Reference intake of an average adult (8400 kJ/2000 kcal)

Ingredients: Potatoes, sunflower oil, somerset cheddar & shallot  
flavour (cheese powder (milk), onion powder, sugar, yeast  
extract powder, salt, lactose (milk), buttermilk powder (milk),  
garlic powder, skimmed milk powder, natural flavouring, herb  
(parsley), cheddar cheese powder (milk), acidity regulator (citric  
acid), anti-caking agent (silicon dioxide)). For allergens, see  
Ingredients in bold. Packed in a protective atmosphere. Made in  
England. Store in a cool, dry place. Once opened, consume  
immediately. Suitable for vegetarians. Gluten free.

**BEST BEFORE (24 January 2025)**

Manufactured in the UK by SAVOURSMITHS LTD.

Find us online at [www.savoursmiths.com](http://www.savoursmiths.com). Any questions or comments?

Write to Savoursmiths Ltd, College Farm, Grange Road, Duxford,  
Cambridge, CB22 4QF or email: [hello@savoursmiths.com](mailto:hello@savoursmiths.com). The  
Savoursmiths word and logo are both registered trademarks of

Savoursmiths Ltd. METAL



Willie's Cacao Champagne Truffles, 35g

**GB** ONLY NATURAL INGREDIENTS. Dark Chocolate Praline Truffles with Marc de Champagne. Dark chocolate cocoa solids: 72% minimum. Ingredients: cocoa mass, raw cane sugar, HAZELNUTS 22%, cocoa powder, HAZELNUT oil 4%, Marc de Champagne 3%, cocoa butter. MAY CONTAIN MILK. **SE NOR DK** MØRK CHOKOLADE PRALINE TRØFLER MED MARC DE CHAMPAGNE/ MØRK SJOKOLADE PRALINE TRØFLER MED MARC DE CHAMPAGNE/ MØRK CHOKLAD PRALINE TRYFFEL MED MARC DE CHAMPAGNE. Mørkchokolade kakao minimum/ minst 72%. Ingredienser: kakaomasse, råsuiker fra sukkerrør/ rårosocker, HASSELNØTTER 22%, kakaopulver, HASSELNØTTER olje 4%, Marc de Champagne 3%, kakaofett/ kakaosmør. KAN INNEHOLDE SPOR AV MELKE/ KAN INNEHÅLLA SPÅR AV MJØLK. Oppbevares på et tørt og kjølig sted/ Förvara svalt och torrt. **FI** TUMMA SUKLAA PRALIINI TRYFFELIT MARC DE CHAMPAGNE. Tumma suklaa kaakaokuiva-aineita minimi 72%. Ainekset: kaakaomassa, raaka ruokosokeri, HASSELPANKKOITA 22%, kaakaopulveri, HASSELPANKKINA öljy 4%, Marc de Champagne 3%, kaakaovo. SAATTA SISALTAA PIENIÄ MAARIA MAITTOA. Säilytä viileässä, kuivassa paikassa. **DE** BITTERSCHOKOLADE-TRUFFELN MIT MARC DE CHAMPAGNE. Dunkle Schokolade kakaanteil mindestens 72%. Zutaten: kakaotrockenmasse, rohrrohrzucker, HASSELNUSSE 22%, kakaopulver, HASSELNUSSEL 4%, Marc de Champagne 3%, kakaobutter. KÖNNEN SPUREN VON MILCH ENTHALTEN. Kühl und trocken lagern. **NL** DONKERE CHOCOLADE PRALINE TRUFFELS MARC DE CHAMPAGNE. Donkere chocolade minimaal 72% cacaobestanddelen. Ingrediënten: cacaomassa, ongeraffineerde rietsuiker, HAZELNOTEN 22%, cacao-poeder, HAZELNOTOLIE 4%, Marc de Champagne 3%, cacao-boter. KAN SPOREN VAN MELK BEVATTEN. Koel en droog bewaren. **FR** TRUFFES PRALINEES AU CHOCOLAT NOIR ET MARC DE CHAMPAGNE. Chocolat noir cacao 72% minimum. Ingrédients: pâte de cacao, sucre de canne, NOISETTES 22%, poudre de cacao, huile de NOISETTES 4%, Marc de Champagne 3%, beurre de cacao. PEUT CONTENIR DES TRACES DE LAIT. Conserver dans un endroit frais et sec. **ES** TRUFAS DE PRALINE DE CHOCOLATE NEGRO CON MARC DE CHAMPAGNE. Chocolate negro sólidos de cacao: 72% mínimo. Ingredientes: pasta de cacao, azúcar de caña en bruto, AVELLANAS 22%, cacao en polvo, aceite de AVELLANAS 4%, Marc de Champagne 3%, manteca de cacao. PUEDE CONTENER TRAZAS DE LECHE. Conservar en un lugar fresco y seco.

**VEGAN 35g**

Store in a cool dry place

NUTRITION INFORMATION / NÆRINGSINFORMASJON / RAVINTOA KOSKEVIA TIETOJA / NAHRWERTANGABEN / VOEDINGSWAARDE INFORMATIE / INFORMATIONS NUTRITIONNELLES / INFORMACION NUTRICIONAL - AVERAGE QUANTITY PER 100g / GJENNOMSNTLIG MENGDE / KESKIMÄÄRÄINEN MÄÄRÄ / DURCHSCHNITTICHE MENGE / GEMIDDELDE HOEVEELHEID / QUANTITE MOYENNE / CANTIDAD MEDIA

ENERGY / ENERGI / ENERGIA / ENERGIE	2330kJ / 562Kcal
FAT TOTAL / FETT TOTALT / RASVA YHTEENSÄ / FETT INSGESAMT / TOTAAL VET / LIPIDES / GRASAS TOTALES	40.2g
SATURATED FAT / METTET FETT / TYVÖYTTYNVY RASVA / DAVON GESÄTTIGTE FETTSÄUREN / VERZADIGD VETZUUR / ACIDES GRAS SATURÉS / GRASAS SATURADAS	14.6g
CARBOHYDRATE / KULHYDRATER / KARBOHYDRATER / HIILHYDRAATIT / KOHLENHYDRATE / GLUCIDES / CARBOIDRATI	36.3g
SUGARS / SUKKER / SOKERI / DAVON ZUCKER / SUCRE / AZÚCAR	35.4g
PROTEIN / PROTEIINI / EIWISS / EIWIIT / PROTEINES	9.0g
SALT / SUOLA / SALZ / ZOUT / SEL / SAL	0.1g



BEST BEFORE / BEST FØR / MINST HOLDBAR TIL / PARASTA ENNEN / MINDESTENS HALTBAR BIS / TENMINSTE HOUDBAAR TOT / A CONSUMMER DE PREFERENCE AVANT / MEJOR ANTES

www.williescacao.com

MADE IN THE UK BY WILLIE'S CACAO LTD, UNIT A, LANGLANDS BUSINESS PARK, UFFCULME, EX15 3DA, UK





Willie's Cacao Milk Praline Truffles, 35g

**GB** ONLY NATURAL INGREDIENTS. Milk Chocolate Praline Truffles with Sea Salt. Milk chocolate cocoa solids: 44% minimum. Milk solids: 21% minimum. Ingredients: raw cane sugar, cocoa mass, HAZELNUTS 24%, MILK powder, cocoa butter, cocoa powder, HAZELNUT oil 0.8%, sea salt 0.7%. **SE NOR DK** PRALINE TRÖFLER, MÆLKCHOKOLADE MED HAVSALT/ PRALINE TRÖFLER, MELKESJOKOLADE MED HAVSALT/ PRALINE TRYFFEL, MJÖLK CHOKLAD MED HAVSSALT. Melkesjokolade kakao minimum/minst: 44%. Mjolk/Melke minimum/ minst: 21%. Ingredienser: råsukker fra sukkerrør/ rårisorøcker, kakaomasse, HASSELNØTTER 24%, MELKEPULVER/ MJÖLKPULVER, kakaofett/ kakaosmør, kakaopulver, HASSELNØTTER olje 0.8%, havsalt 0.7%. Oppbevares på et tørt og kjølig sted/Förvara svalt och torrt.

**FI** MAITOSUKLAA PRALIINI TRYFFELIT MERISUOLALLA. Maitosuklaa kaakaokuiva-aineita minimi 44%. Maitokiintoaine minimi : 21%. Ainekset: raaka ruokosokeri, kaakaomassa, HASSELPÄHKINÖITÄ 24%, MAITOPULVERI, kaakaovoi, kaakaojauhe, HASSELPÄHKINÖILIJY 0.8%, merisuola 0.7%. Säilytä viileässä, kuivassa paikassa.

**DE** VOLLMILCHSCHOKOLADE-TRÜFFELN MIT MEERSALZ. Vollmilchschokolade kakaoanteil mindestens 44%. Milch mindestens 21%. Zutaten: rohrrohrzucker, kakaotrockenmasse, HASSELNÜSSE 24%, MILCHPULVER, kakaobutter, kakaopulver, HASSELNÜSSENÖL 0.8%, meersalz 0.7%. Kühl und trocken lagern. **NL** MELK SCHOKOLADE PRALINE TRUFFELS MET ZEEZOUT. Melk chocolade minimaal 44% cacaobestanddelen. Minimaal 21% Melk. Ingrediënten: ongeraffineerde rietsuiker, cacaoomassa, HAZELNOTEN 24%, MELKPOEDER, cacaooter, cacaooeder, HAZELNOTOLIE 0.8%, zeezout 0.7%. Koel en droog bewaren.

**ES** TRUFAS DE PRALINE, CHOCOLATE CON LECHE CON SAL MARINA. Chocolate con leche sólidos de cacao 44% mínimo. Leche 21% mínimo. Ingredientes: azúcar de caña en bruto, pasta de cacao, AVELLANAS 24%, LECHE en polvo, manteca de cacao, cacao en polvo, aceite de AVELLANAS 0.8%, sal marina 0.7%. Conservar en un lugar fresco y seco.

**35g**

Store in a cool dry place

NUTRITION INFORMATION / NÆRINGSINFORMASJON / RAVINTOA KOSKEVIA TIETOJA  
/ NAHRWERTANGABEN / VOEDINGSWAARDE INFORMATIE / INFORMACION  
NUTRICIONAL - AVERAGE QUANTITY PER 100g /  
GJENNOMSNITTLIG MENGE / KESKIMÄÄRÄINEN MÄÄRÄ / DURCHSCHNITTICHE  
MENGE / GEMIDDELDE HOEVEELHEID / CANTIDAD MEDIA

ENERGY / ENERGI / ENERGIA	2273kJ / 546Kcal
FAT TOTAL / FETT TOTALT / RASVA YHTEENSÄ / FETT INSGESAMT /	34.8g
TOTAAL VET / GRASAS TOTALES	
SATURATED FAT / METTET FETT / TYDYTTYNYT RASVA /	12.8g
DAVON GESÄTTIGTE FETTSÄUREN / VERZADIGD VETZUUR /	
GRASAS SATURADAS	
CARBOHYDRATE / KULHYDRATER / KARBOHYDRATER / HIILHYDRAATIT /	44.7g
KOHLNHYDRATE / CARBOIDRATI	
SUGARS / SUKKER / SOKERI / DAVON ZUCKER / AZÚCAR	34.9g
PROTEIN / PROTEINI / EIWISS / EIWIT / PROTEINES	10.3g
SALT / SUOLA / SALZ / ZOUT / SAL	0.3g



BB 07/05/2026

10054

BEST BEFORE / BEST FØR / MINDST HOLDBAR TIL / PARASTA  
ENNEN / MINDESTENS HALTBAR BIS / TENMINSTE HOUDBAAR TOT /  
MEJOR ANTES  
[www.williescacao.com](http://www.williescacao.com)

MADE IN THE UK BY WILLIE'S CACAO LTD, UNIT A, LANGLANDS BUSINESS PARK, UFFCULME, EX15 3DA, UK  
AND WILLIE'S CACAO LTD, ØSTERBROGÅDE 226 ST. TV, 2100 COPENHAGEN, DENMARK



**CARTWRIGHT**  
ENGLAND  
& **BUTLER**

**C&B MERRY CHRISTMAS LOAF CAKE**

**INGREDIENTS:** Sultanas (50%) (Sultanas, Sunflower Oil), Fortified **WHEAT** Flour (with added Calcium Carbonate, Niacin, Iron, Thiamine), Whole **EGG**, Sugar, Cherries (8%) (Cherries, Glucose-Fructose Syrup, Sugar, Acidity Regulator: Citric Acid; Preservatives: Potassium Sorbate, **SULPHUR DIOXIDE**; Colours (Anthocyanins, Erythrosine), Salted Butter (Cream, (**MILK**) Salt), Glucose Syrup (contains **SULPHUR DIOXIDE**), Whole and Flaked **ALMONDS** (2.5%), Black Treacle (Cane Molasses, Partially Inverted Refiners Syrup, Sugarcane Syrup (contains **SULPHITES**)), Marzipan (Sugar, **ALMONDS** (25%), Glucose Syrup, Water, Invert Sugar Syrup, Humectant: Sorbitol; Preservative: Potassium Sorbate), Humectant: Vegetable Glycerine; Liquid Glaze (Water, Dextrin, Sugar, Glucose Syrup, Acidity Regulator: Citric Acid; Preservative: Potassium Sorbate), Fondant Icing (Sugar, Glucose Syrup, Water, Emulsifier: Mono and Di-glycerides of Fatty Acids), Whey Powder (**MILK**), Raising Agents: Sodium Acid Pyrophosphate, Sodium Bicarbonate; Dusting Powder (Dextrose, Sugar, Cornflour, Palm Oil).

For Allergens see ingredients in **bold**. May contain other Nuts, Mustard and Soya.

Although every effort has been made to remove the cherry stones, some of them may remain.

To achieve the best results when cutting your fruit cake please use a serrated knife with a sawing action, cleaning the knife between each slice.

Store in a cool, dry place out of direct sunlight. After opening store in an airtight container and consume within 3 days.

**NUTRITIONAL (AVERAGE PER 100G)**

Energy kJ/kcal 1346/321, Fat 7.3g, of which Saturated 3.6g,  
Carbohydrate 61.1g, of which Sugars 49.4g, Fibre 1.5g,  
Protein 3.6g, Salt 0.26g

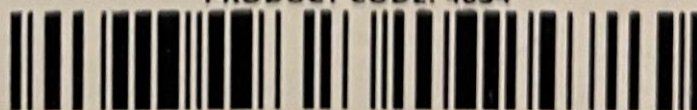
**cartwrightandbutler.co.uk**

MADE IN THE UK BY CARTWRIGHT & BUTLER PO BOX 298 BEVERLEY HU17 6FG UK  
CARTWRIGHT & BUTLER, JOYCE HOUSE, 21 23 HOLLES STREET, DUBLIN 2, IRELAND  
CARTWRIGHT & BUTLER IS A REGISTERED TRADEMARK

**Best Before:** 14/11/2026

**Batch:** CB25203

PRODUCT CODE: 4034



5060996661123

**LEMON &  
DARK CHOCOLATE  
VIENNESE BISCUITS**

INGREDIENTS **Wheat** flour (calcium, iron, niacin, thiamine),  
salted butter (**milk**, salt), dark chocolate (20%) (sugar, cocoa mass,  
cocoa butter, emulsifier: **soya** lecithin, natural vanilla flavouring), sugar,  
lemon cheese (9%) (salted butter (**milk**, salt), lemons), cornflour,  
pasteurised **egg**, natural flavouring.

For allergens, see ingredients in **bold**. May contain traces of tree nuts.

**NUTRITIONAL (PER 100G)**

Energy 2039kJ (488kcal), fat 26.9g, of which saturates 16.7g,  
carbohydrate 55.8g, of which sugars 26.5g, fibre 2.8g, protein 4.2g, salt 0.45g.

ONCE OPENED STORE IN A COOL, DRY PLACE, IN AN AIRTIGHT CONTAINER  
AND CONSUME WITHIN 2 WEEKS.

**cartwrightandbutler.co.uk**

MADE IN THE UK FOR CARTWRIGHT & BUTLER  
PO BOX 298 BEVERLEY HU17 6FG UK  
CARTWRIGHT & BUTLER, JOYCE HOUSE, 21-23 HOLLES STREET,  
DUBLIN 2, IRELAND

CARTWRIGHT & BUTLER® IS A REGISTERED TRADEMARK

200g e



BEST BEFORE  
SEE TIN



Walnut Tree Chocolate Enrobed Lemon, Orange & Ginger Slices, 220g

typical value per 100g - energy kj 1689, Energy Kcal 403, fat 16g, of which is saturate 9.5g, carbohydrate 60g, of which is sugar 55g, fibre 3g, protein 2.6g, salt 0.2g

Full Product Name	Enrobed Ginger, Lemon & Orange
Ingredients, with allergens in <b>bold</b>	Orange, SULPHUR DIOXIDE, sugar cocoa butter, SOYA LECITHIN, natural vanilla flavouring, ginger, lemon peel, cocoa mass, dextrose, fructose, maltose.
May contain statements	Packed in nut environment
Net Quantity in grams	220G
Country of Origin	Packed in the UK
Storage instructions	Store in a cool dry place
Manufacturer's name and address	Walnut Tree Gifts Ltd Unit 15 Stirling Industrial Centre WD6 2BT

Hamlet Assorted Belgian Chocolates in Large Ribbon Gift Box, 800g


Assortiment van pralines - Ingrédients: suiker, volle melkpoeder, cacao**boter**, cacao**massa**, plantaardige oliën (palm, koolzaad) in wisselende verhoudingen, **hazelnooten** 2,5%, **boterolie (melk)**, glucosesiroop, koffie-extract 0,06%, emulgator: **soja**lecithine, aroma's: aardbei, karamel, **pistache**, sinaasappel en vanille. Chocolade: ten minste 50% cacaobestanddelen. Melkchocolade: ten minste 29% cacaobestanddelen. Witte chocolade: ten minste 23% cacaobestanddelen. Kan sporen van andere **noten** bevatten. Koel en droog bewaren. Gefabriceerd in België. Assortiment de bonbons de chocolat - Ingrédients: sucre, **lait** entier en poudre, beurre de cacao, pâte de cacao, huiles végétales (palm, colza) en proportion variable, **noisettes** 2,5%, huile butyrique (**lait**), sirop de glucose, extrait de café 0,06%, émulsifiant: **lecithine de soja**, arômes: fraise, caramel, pistache, orange et vanille. Cacao: 50% minimum (dans le chocolat). Cacao: 29% minimum (dans le chocolat au lait). Cacao: 23% minimum (dans le chocolat blanc). Peut contenir des traces d'autres **fruits à coque**. A conserver au sec et au frais. Fabriqué en Belgique. Assorted chocolates - Ingredients: sugar, whole **milk** powder, cocoa **butter**, cocoa **mass**, vegetable oils (palm, rapeseed) in varying proportions, **hazelnuts** 2,5%, **butter oil (milk)**, glucose syrup, coffee extract 0,06%, emulsifier: **soy** lecithin, flavourings: strawberry, caramel, **pistachio**, orange and vanilla. Cocoa solids: chocolate: min. 50%, milk chocolate: min. 29%, white chocolate: min. 23%. Milk solids: milk chocolate: min. 24%, white chocolate: min. 27%. May contain traces of other **nuts**. Keep cool and dry. Made in Belgium. Imported by: World Wide Imports Ltd, Unit 12, Harvard Hub, 1 Stark Drive, Christchurch 8042, New Zealand. www.worldwideimports.co.nz. Pralinenmischung - Zutaten: Zucker, **Vollmilchpulver**, Kakaobutter, Kakaomasse, pflanzliche Öle (Palm, Raps) in veränderlichen Gewichtsanteilen, **Haselnüsse** 2,5%, Butterfett (Milch), Glukosesirup, Kaffee-Extrakt 0,06%, Emulgator: **Soja**lecithine, Aromen: Erdbeere, Karamell, **Pistazie**, Orange und Vanillearoma. Kakao: 50% mindestens im Schokoladenanteil. Kakao: 29% mindestens im Milchschokoladenanteil. Kakao: 23% mindestens im Anteil weiße Schokolade. Kann Spuren von anderen **Schalenfrüchten** enthalten. Kühl und trocken lagern. Hergestellt in Belgien. Surtido de bombones de chocolate - Ingredientes: azúcar, **leche** entera en polvo, manteca de cacao, pasta de cacao, aceites vegetales (palma, colza) en proporción variable, **avellanas** 2,5%, aceite de mantequilla (**leche**), jarabe de glucosa, extracto de café 0,06%, emulgente: **lecitina de soja**, aromas: fresa, caramelo, **pistacho**, naranja y vainilla. Porcentaje de cacao: Chocolate, cacao: 50% mínimo; Chocolate con leche, cacao: 29% mínimo; Chocolate blanco, cacao: 23% mínimo. Puede contener trazas de otros **frutos de cáscara**. Conservar en lugar fresco y seco. Producido en Bélgica. Blandning av praliner - Ingredienser: socker, **helt mjölkpulver**, kakaobutter, kakaomassa, vegetabiliska oljor (palm, raps) i varierande proportion, **hasselkottar** 2,5%, smörolja (**mjölk**), glukossirap, kaffeextrakt 0,06%, emulgeringsmedel: **soja**lecitin, aromer: jordgubbe, karamell, **pistach**, apelsin och vanilj. Kakaohalt: choklad: min. 50%, mjölkchoklad: min. 29%, vit choklad: min. 23%. Kan innehålla spår av andra **notter**. Förvaras svalt och torrt. Tillverkad i Belgien. Cokoládové bombóny formované - Složení: cukr, sušené plnotučné **mléko**, kakaové máslo, kakaová hmota, rostlinné oleje (palmový, řepkový) v různém poměru, **liskové ořechy** 2,5%, máslový olej (**mléko**), glukózový sirup, kávový extrakt 0,06%, emulgátor: **sojový** lecitin, aroma: jahoda, karamel, **pistácie**, pomeranč a vanilka. Obsah kakaové sušiny v čokoládě nejméně 50%, v mléčné čokoládě nejméně 29%, v bílé čokoládě nejméně 23%. Může obsahovat stopy dalších **orechů**. Uchovávejte v suchu a chladu. Země původu: Belgie. Rainforest Alliance Certified. Find out more at ra.org

Hamlet nv - Kerckstraat 77 - BE-9120 Vrasene  
Tel.: +32 3 750 99 50

Nettogewicht/Poids net/Net weight/Netto-gewicht/Peso neto/Nettovikt/Hmotnost: 800 g e  
Net Wt. 28.2 oz

Ten minste houdbaar tot/A consumer de préférence avant le/Best before/Mindestens haltbar bis/Consumir preferentemente antes del/Bást före/Minimální trvanlivost do: 23-06-2023  
LD2274

119.02.0016V112021

 Cocoa

Voedingswaarden/Valeurs nutritionnelles/Nutrition information/Durchschnittliche Nährwerte/Valores nutricionales/Näringsvärde/Výživové hodnoty	100 g	20 g
Energie/Energie/Energy/Energie/Valor energético/Energi/Energetická hodnota:	2360 kJ 565 kcal	473 kJ 113 kcal
Vetten/Matières grasses/Fat/Fett/Grasas/Fett/Iuky:	38 g	7,5 g
- waarvan verzadigde vetzuren/dont acides gras saturés/of which saturates/davon gesättigte Fettsäuren/de las cuales saturadas/varav mättat fett/z toho nasycené mastné kyseliny:	20 g	4,0 g
Koolhydraten/Glucides/Carbohydrate/Kohlenhydrate/Hidratos de carbono/Kolhydrat/Sacharidy:	50 g	10 g
- waarvan suikers/dont sucres/of which sugars/davon Zucker/de los cuales azúcares/- av sockerarter/z toho cukry:	49 g	9,7 g
Eiwitten/Protéines/Proteins/Proteine/Proteínas/Protein/Bilkoviny:	6,0 g	1,2 g
Zout/Sel/Salt/Salz/Salt:	0,15 g	0,03 g
40 porties van/Portions de/Portionen à/porciones de/portioner av/porci po 20 g (80 *) stuks/pieces/pieces de/piezas/styck/kusů		

Min. + 5°C/41°F  
Max. + 20°C/68°F

5 400265 034485

## The Dormen Salted Peanuts 100g

### Ingredients

Peanuts (96%), Rapeseed Oil, Salt

### Allergy Information

May Contain Celery, May Contain Eggs, May Contain Milk, May Contain Mustard, May Contain Nuts, Contains Peanuts, May Contain Sesame, May Contain Soya. Suitable for Vegetarians

### Nutritional Information

Typical Values	Per 100g
Energy	2575KJ
	623Kcal
Fat	51.9g
Of which Saturates	7.6g
Carbohydrate	8.1g
Of which Sugars	3.5g
Fibre	10g
Protein	26g
Salt	0.79g

Cartwright and Butler - Chocolate Brownie Biscuits in Tin

### Ingredients:

**Wheat** Flour (Calcium, Iron, Niacin, Thiamine), Plain Chocolate Chips (21%) (Sugar, Cocoa Mass, Cocoa Butter, Emulsifier: **Soya** Lecithin; Natural Flavouring), Melted Dark Chocolate (18%) (Cocoa Mass, Sugar, Cocoa Butter, **Milk** Fat, Emulsifier: **Soya** Lecithin; Natural Vanilla Flavouring),

Salted Butter (15%) (Cream: **Milk**; Salt), Sugar, Cocoa Powder, **Eggs**, Raising Agent: Sodium Bicarbonate.

**May contain nuts, peanuts, mustard and sesame seeds.**

**Storage information:**

Store in a cool, dry place, Once opened store in an airtight container and consume within 2 weeks.

Nutritional information	Typical figures per 100 grams
Energy kJ	2218
Energy kcal	530
Fat (g)	29
of which is saturated (g)	18
Carbohydrate (g)	59
- of which sugar (g)	35
Dietary fibre (g)	5.9
Protein (g)	6.5
Salt (g)	0.49

**Carwright and Butler Onion Chutny**

Onions (37%), sugar, malt vinegar (from barley), apples, dates, mustard flour, salt, chilli powder.

For allergens please see ingredients in bold. May contain traces of nuts.

Refrigerate after opening and consume within 28 days.

We are not the manufacturer of the products sold on our website. While we work to ensure that product information on our website is correct, manufacturers may alter their product information. Actual product packaging and materials may contain more and/or different information than shown on our website. You should always read the labels, warnings and instructions provided with the product before using or consuming it and not solely rely on the information presented on our website.

#### Nutritional Information

Per 100g

Energy (kcal)	185.00
Fat (g)	0.20
of which saturates	0.00
Carbohydrate (g)	46.80
of which sugars	45.60
Fibre (g)	1.10
Protein (g)	1.00
Salt (g)	0.000200

## Belvoir Blueberry & Blackcurrant Cordial, 50cl

### Nutritional data

#### Typical Values

Per 100ml diluted 1  
to 8

Energy kJ/kcal

89/21

Carbohydrate

5.2g

of which sugars

4.9g

Contains negligible amounts of fat, saturates,  
protein and salt

### Preparation and Usage

Makes 18 Glasses\*

\*Based on 250ml serving

Dilute up to 1:8 or drizzle over ice cream.

Some fruit may settle, turn the bottle gently before  
opening to wake its natural goodness.

## Ingredients

Sugar, Water, Blueberry Juice 10%, Blackcurrant Juice 9%, Blueberry Juice  
from Concentrate 7%, Citric Acid

## Cartwright and Butler Boxing Day Chutney

### Ingredients:

Apples (29%), Onion, Red wine (9%), Cranberries (7%), Cider Vinegar, Dried Apricots (4%) (Apricots, Preservative: Sulphur Dioxide (**Sulphites**)), Prunes (Prunes, Sunflower Oil, Preservative: Potassium Sorbate), Stem Ginger (Ginger (60%), Sugar), Sugar, Black Pepper, Nigella Seeds, Nutmeg, Chilli Powder, Ground Cinnamon.

**Contains alcohol. May contain fruit stones.**

**May contain Gluten, Eggs, Soya, Nuts, Mustard and Milk.**

### Storage information:

Refrigerate after opening and consume within 28 days.

Nutritional information	Typical figures per 100 grams
Energy kJ	242
Energy kcal	57
Fat (g)	0.1
Carbohydrate (g)	12.3
- of which sugar (g)	11.7
Dietary fibre (g)	1.4
Protein (g)	0.6
Salt (g)	0.02



## Bollinger Special Cuvée Champagne Magnum

Grape Chardonnay

Secondary Grape Varieties Pinot Noir, Pinot Meunier

Closure Natural Cork

Country France

Units 18.0

Characteristics Citrus Fruit, Biscuit, Bread

ABV ABV 12%

Per bottle / case / each per bottle

Type White

Region Champagne

Style Rich & Toasty

Vintage NV

## Bollinger Special Cuvée Champagne

**Grape** Chardonnay

**Secondary Grape Varieties** Pinot Noir, Pinot Meunier

**Closure** Natural Cork

**Country** France

**Units** 18.0

**Characteristics** Citrus Fruit, Biscuit, Bread

**ABV** ABV 12%

**Per bottle / case / each** per bottle

**Type** White

**Region** Champagne

**Style** Rich & Toasty

**Vintage** NV

### **Lanson Rosé Label**

Wine Type: Champán

Winecellar: Lanson

Regions: A.O.C. Champagne

Grape Variety: 32% Chardonnay, 15% Pinot Meunier, 53% Pinot Noir

Bottle type: Champenoise

Bottle size (cl): 75

Service: Serve at an ambient temperature of 8 °C

Graduation (% vol.): 12.50

### **Lanson Le Black Creation Champagne 75Cl**

Pack size: 75CL

Allergy Information

Contains Sulphites

Alcohol Type

Wine

Grape Variety

Pinot Noir, Chardonnay, Pinot Meunier

Producer

Lanson

Country

France

Net Contents

750ml

Type of Closure

Oak Bark Cork

**PROSECCO**  
Denominazione di Origine Controllata  
**TREVISO**

**BRUT**



Prodotto da LA GIOIOSA SPA  
CROCETTA DEL MONTELLO (TV) - ITALIA

75cl e **PRODOTTO IN ITALIA** 11%vol



CONTIENE SOLFITI - CONTAINS SULPHITES - ENTHÄLT SULFITE - CONTIENT SULFITES  
BERE RESPONSABILMENTE - DRINK RESPONSIBLY





# DeNatile

## NERO D'AVOLA SICILIA



DENOMINAZIONE DI ORIGINE CONTROLLATA  
2023

Vino rosso di intensità e fascino, con note speziate e di pepe nero. Dal gusto persistente, ricco ed elegante, è perfetto abbinato al sapore deciso di carne rossa, arrosti, selvaggina e formaggi stagionati.

A complex and charming red, with notes of black pepper and spices. Elegant and well balanced, it is perfect with the strong flavours of red meat, such as roasts and game, and mature cheeses.

INGREDIENTS,  
INFO & RECYCLE



100 ml: E = 344 kJ/ 82 kcal

Imbottigliato da C.F.M. e C. S.p.A. - Verolanuova - Italia  
per conto di The Wine People S.r.l. - Trento - Italia



75cl e | 14% vol

PRODOTTO IN ITALIA - PRODUCT OF ITALY

North South Wines, OX27 8AL, UK

CONTIENE SOLFITI - ENTHÄLT SULFITE - POKRAJNJI SOLFITI - INDEHOLDER SULFITTER  
SISÄÄLLÄ SULFITTEJA - CONTIENT SULFITES - CONTAINS SULPHITES  
SODATYJE YRA SULFITAI - FIH SULFITI - BEVAT SULFIETEN - ZAWIERA  
SULFITY - CONTEM SULFITOS - OBSAHUJE SIRIČITANY - OBSAHUJE ÓÍÉICITANY

L-CEE23 13:56







# DeNatile

## PINOT GRIGIO TERRE SICILIANE

### INDICAZIONE GEOGRAFICA TIPICA 2023

Vino bianco dal profumo intenso di frutti tropicali e agrumi. Perfettamente equilibrato, morbido e rinfrescante. È un vino versatile, perfetto come aperitivo o abbinato a una gran varietà di piatti.

An intense white with a lovely bouquet of tropical and citrus fruits. Perfectly balanced, supple and refreshing. A versatile wine, it pairs well with a great variety of dishes or can be enjoyed as an aperitif.

INGREDIENTS,  
INFO & RECYCLE



100 ml E = 315 kJ/ 75 kcal

Imbottigliato da C.F.M. e C. S.p.A. - Verolanuova - Italia  
*The Wine People S.r.l. - Trento - Italia*



75cl e

13% vol

PRODOTTO IN ITALIA - PRODUCT OF ITALY

North South Wines, OX27 8AL, UK

CONTIENE SOLFITI - ENTHÄLT SULFITE - POKRAJNJI SOLFITI - INDEHOLDER SULFITTER  
VÄRME SULFID - SISÄLTÄÄ SULFIITTEJA - CONTIENT SULFITES - CONTAINS SULPHITES  
SULFI SULFI - SODATYJE YRA SULFITAI - FIH SULFITI - BEVAT SULFIETEN - ZAWIERA  
SULFITEN - CONTIEN SULFITOS - OBSAHUJE SIRIČITANY - OBSAHUJE OIEICITANY  
KÖRÖL SULFI - CONTIENE SULFITOS - INNEHÄLLER SULFITER - TARTALMAZ SZULFITOK

L-CEE18  
12:13

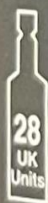


8 034115 197524

# ST-RÉMY®

## XO

Since 1886, St-Rémy has crafted brandies through the selection and distillation of wines sourced exclusively from French vineyards. Aged in small French oak barrels, St-Rémy XO is a brandy of character with complex aromas and rich taste. Recognised for its elegance and roundness, it is best savoured neat, on ice or in classic cocktails.



For further health  
information visit

[drinkaware.co.uk](http://drinkaware.co.uk)



RÉMY COINTREAU UK DISTRIBUTION LIMITED  
40 Berners Street, LONDON W1T 3NA - UK

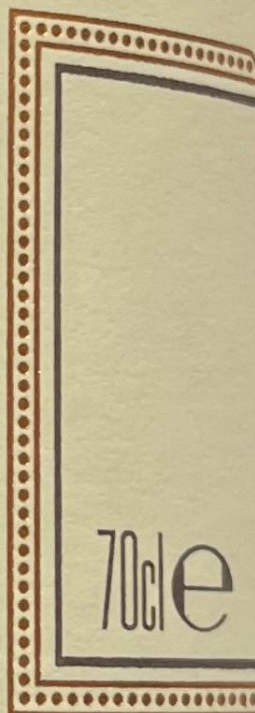
COINTREAU 49124 SAINT-BARTHELEMY-D'ANJOU - FRANCE



Bottled on behalf of Halewood Artisanal Spirits Ltd,  
Tennyson House, 159-165 Great Portland Street,  
London W1W 5PA, UK. JSH Global Trading LLC,  
Republic of Armenia, Yerevan, Artsakh avenue, 63.  
Distributed in the EU by Dyflin Distillers Ltd, 39/40  
Mount Street Upper, Dublin 2, Ireland.



Distilled from wheat  
[www.jj-whitley.com](http://www.jj-whitley.com)



LLY BRITISH



HANDCRAFTED

ARTISANAL  
VODKA

*Gold Filtered*

ILLING FOR 8 GENERATIONS



### **Bottega Tiramisu Liqueur 50cl**

A pleasantly sweet and creamy liqueur inspired by the traditional Italian dessert. Best served chilled, it is perfect on its own, added to cocktails or even with panettone or ice cream.

50cl bottle

ABV 17%

Riverside Blackberry Gin Liqueur

Allergy Information

This product does not contain any notifiable allergens



70cl

20%AVB

RECIPE NUMBER	23004, 23005, 23006, 23007, 23008
MEURSING CODE	7011
PRODUCT NAME	Christmas Wreath Assortment (SG)
LEGAL NAME	Sweet Biscuit Seletion
RSPO CERTIFICATE NO.	B M T - R S P O - 0 0 1 2 8 5

**FARMHOUSE  
BISCUITS**  
EST. 1962

INGREDIENTS
<p>Flour (<b>Wheat</b> Flour, Calcium, Niacin, Iron, Thiamin), Vegetable Oils (Sustainable Palm, Rapeseed), Sugar, Rolled <b>Oats</b> (11%), Invert Sugar Syrup (Sugar Syrup, Cane Molasses), Sweetened Dried Cranberries (2%) (Cranberries, Sugar, Sunflower Oil), Salted Caramel Pieces (Sugar, Glucose Syrup, Salted Butter (<b>Milk</b>, Salt), Coconut Oil, Salt, Natural Flavouring, Colour: Plain Caramel), Soft Brown Sugar (Sugar, Cane Molasses, Colour: Plain Caramel, Partially Inverted Sugar Syrup), White Chocolate Chips (Sugar, Whole <b>Milk</b> Powder, Cocoa Butter, Skimmed <b>Milk</b> Powder, Emulsifier: <b>Soya</b> Lecithin), Natural Vanilla Flavouring), Milk Chocolate Chips (Sugar, Whole <b>Milk</b> Powder, Cocoa Butter, Cocoa Mass, Emulsifier: <b>Soya</b> Lecithin), Natural Vanilla Flavouring), Rice Flour, Raising Agents: Sodium Hydrogen Carbonate, Diphosphate, Rice Flour; Mincemeat (Vine Fruits (Currants, Raisins, Sultanas), Sugar, Apples, Cider, Rapeseed Oil, Citrus Peel (Orange Peel, Lemon Peel, Glucose-Fructose Syrup, Sugar, Acidity Regulator: Citric Acid), Brandy, Acid: Acetic Acid, Mixed Spice), Ground Ginger, Ground Cinnamon, Natural Flavouring, Flavouring, Ground Nutmeg, Salt.</p>

*For allergen information, including cereals containing gluten, see ingredients in bold. May also contain Egg & Tree Nuts.*

NUTRITIONAL INFORMATION TYPICALLY PER 100g		
ENERGY	2191	kJ
ENERGY	524	kcal
FAT	26.2	g
OF WHICH SATURATES	8.7	g
CARBOHYDRATES	65.2	g
OF WHICH SUGARS	26.5	g
PROTEIN	5.2	g
SALT	1.05	g



# Popcorn Shed Gourmet Popcorn Gift Box

Ingredients	
Salted Caramel	Popped Corn (23%), Sugar, Butter (contains <b>Milk</b> ), Milk Chocolate (15%) (contains: Sugar, Cocoa Butter, Whole <b>Milk</b> Powder, Cocoa Mass, Emulsifier: <b>Soya</b> Lecithin, Natural Vanilla Flavouring), Glucose Syrup, Golden Syrup, Rapeseed Oil, Sea Salt (1%), Natural Flavouring, Emulsifier: <b>Soya</b> Lecithin, Raising Agent: Bicarbonate of Soda.
Pecan Pie	Popped Corn (24%), Sugar, Butter (contains <b>Milk</b> ), Glucose Syrup, Golden Syrup, Pecan Halves (5%) ( <b>Nuts</b> ), Rapeseed Oil, Salt, Natural Flavouring, Emulsifier: <b>Soya</b> Lecithin, Raising Agent: Bicarbonate of Soda.
Pop n Choc	Popped Corn (23%), Sugar, Butter (contains <b>Milk</b> ), Milk Chocolate (8%) (contains: Sugar, Cocoa Butter, Whole <b>Milk</b> Powder, Cocoa Mass, Emulsifier: <b>Soya</b> Lecithin, Natural Vanilla Flavouring), Glucose Syrup, Golden Syrup, Cocoa Powder (6%), Rapeseed Oil, Salt, Emulsifier: <b>Soya</b> Lecithin, Raising Agent: Bicarbonate of Soda.
White Chocolate	Popped Corn (23%), Sugar, Glucose Syrup, White Chocolate (13%) (Sugar, Cocoa Butter, Whole <b>Milk</b> Powder, Emulsifier: <b>Soya</b> Lecithin, Natural Vanilla Flavouring), Butter ( <b>Milk</b> ), Salt, Rapeseed Oil, Natural Flavouring, Emulsifier: Sunflower Lecithin, Raising Agent: Bicarbonate of Soda.

Strawberries & Cream	Popped Corn, Sugar, Glucose Syrup, Butter (contains <b>Milk</b> ), Rapeseed Oil, Strawberries, Double Cream (contains <b>Milk</b> ), Salt, Emulsifier: Sunflower Lecithin, Raising Agent: Bicarbonate of Soda, Natural Flavouring.
Chocolate Orange	Popped Corn (22%), Sugar, Glucose Syrup, Dark Chocolate (15%) (Cocoa Mass, Sugar, Cocoa Butter, Emulsifier: <b>Soya</b> Lecithin, Natural Vanilla Flavour), Coconut Oil, Orange Peel (1.2%), Salt, Rapeseed Oil, Emulsifier: Sunflower Lecithin, Raising Agent: Bicarbonate of Soda, Natural Flavouring.

Cookies & Cream	Popped Corn, Sugar, White Chocolate (28%) (contains: Sugar, Cocoa Butter, Whole <b>Milk</b> Powder, Emulsifier: <b>Soya</b> Lecithin, Natural Vanilla Flavouring), Chocolate Cookie Crumb (10%) (contains: Wheat Flour ( <b>Gluten</b> ), Sugar, Vegetable Oil (Palm), Cocoa Powder (4.6%), Wheat Starch ( <b>Gluten</b> ), Glucose-Fructose Syrup, Salt, Raising Agents (Potassium Hydrogen Carbonate, Sodium Hydrogen Carbonate, Ammonium Hydrogen Carbonate), Emulsifiers ( <b>Soya</b> Lecithin, Sunflower Lecithin), Flavouring (Vanillin)), Glucose Syrup, Golden Syrup, Butter (contains <b>Milk</b> ), Rapeseed Oil, Salt, Bicarbonate of Soda, Emulsifier: <b>Soya</b> Lecithin.
Butterscotch	Popped Corn (31%), Sugar, Glucose Syrup, Golden Syrup, Coconut Oil, Rapeseed Oil, Salt, Raising Agent: Bicarbonate of Soda, Natural Flavouring (0.3%), Emulsifier: <b>Soya</b> Lecithin.

NUTRITIONAL INFORMATION								
<i>typical values per 100g</i>	<b>Salted Caramel</b>	<b>Pecan Pie</b>	<b>Pop N Choc</b>	<b>White Chocolate</b>	<b>Strawberries &amp; Cream</b>	<b>Cookies &amp; Cream</b>	<b>Butterscotch</b>	<b>Chocolate Orange</b>
Energy	498kcal/ 2082KJ	483kcal/ 2026KJ	494kcal/ 2067KJ	438kcal/ 1832KJ	422kcal/ 1767KJ	419kcal/ 1752KJ	435kcal/ 1837KJ	442kcal/ 1849KJ
Fat	24.5g	21.2g	23.4g	14.4g	11.0g	16.9g	11.5g	16.1g
Of which saturates	14.9g	11.8g	14.3g	7.9g	5.8g	9.1g	8.1g	11.0g
Carbohydrates	61.7g	67.2g	63.8g	70.8g	74.6g	60.4g	80.6g	68.1g
Of which sugars	42.6g	45.6g	40.0g	41.8g	39.7g	38.7g	50.7g	39.4g
Protein	4.2g	3.5g	5.2g	3.8g	3.6g	4.5g	4.1g	3.6g
Salt	1.1g	1.1g	0.8g	1.0g	0.5g	0.5g	1.6g	0.9g