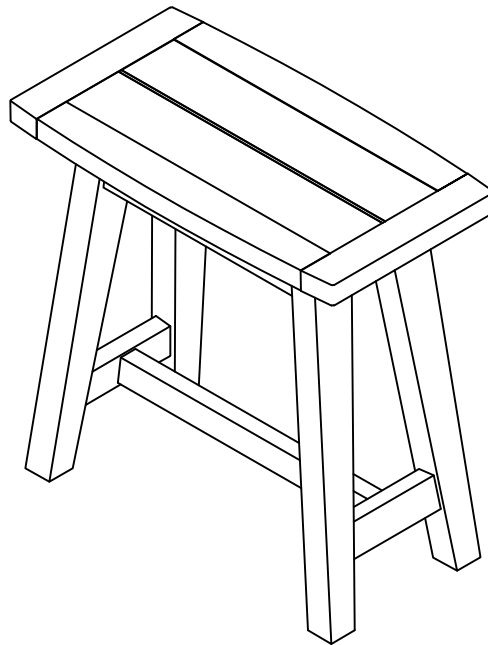


SIDE TABLE

Stock number: 6048-03

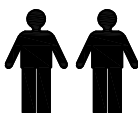
Thank you for purchasing this product. Please read the instructions carefully before use to ensure safe and satisfactory operation of this product.



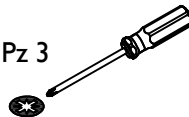
Pre-assembly preparation

Please ensure instructions are read in full before attempting to assemble this product.

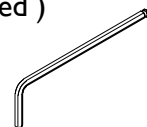
Necessary Tools : Pozi screwdriver



Pz 2 or Pz 3



(Included)



Please check the pack contents before attempting to assemble this product. A full checklist of components is given in this leaflet. If any components are missing, please contact the retailer from whom you bought this product.

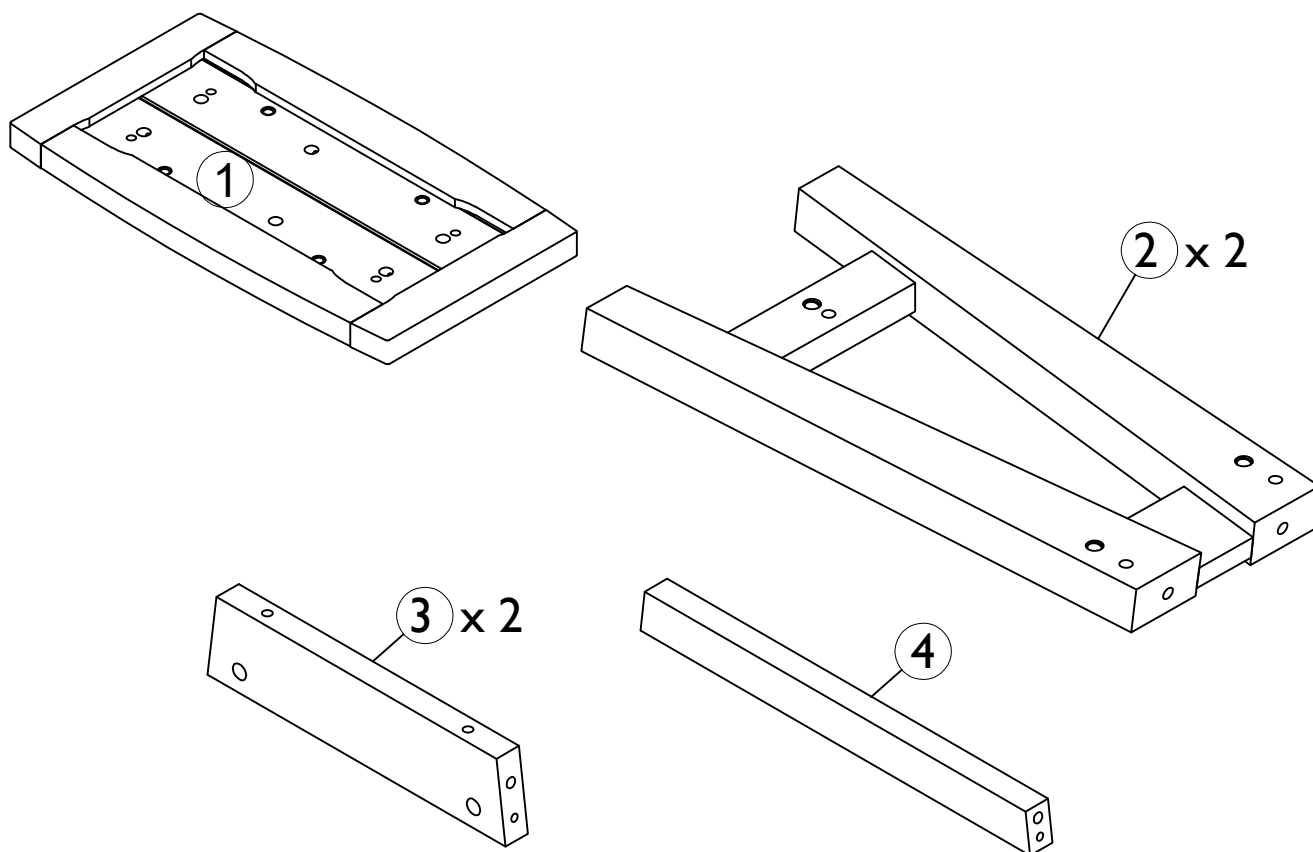
This product takes approximately **20 MINUTES** to assemble with **2 PEOPLE**.

All assembly should be performed on a flat, stable, clean and soft surface.

This product is **HEAVY**, it should be assembled as near as possible to the point of use. **TAKE CARE WHEN LIFTING** to avoid personal injury and (or) damage to the product

The fitting pack contains **SMALL ITEMS** which should be **KEPT AWAY FROM YOUNG CHILDREN**.

IMPORTANT: Retain these instructions for future reference.

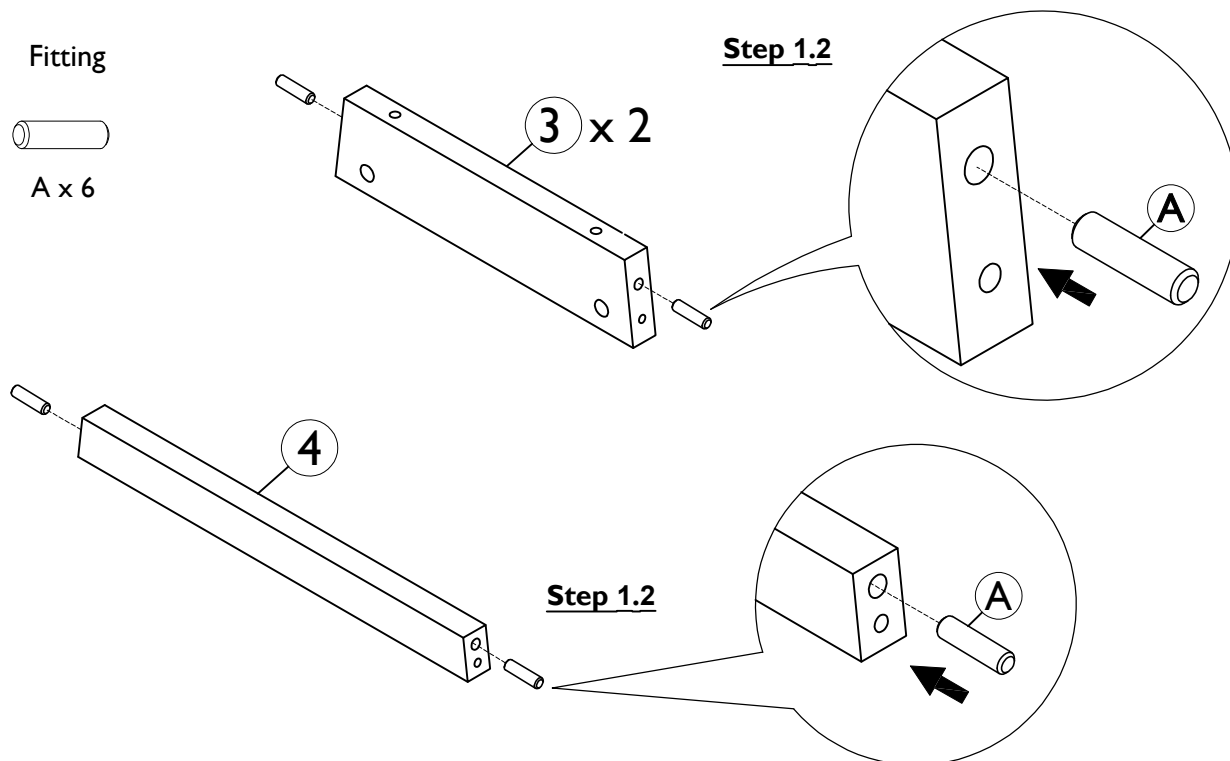


Fittings and parts checklist

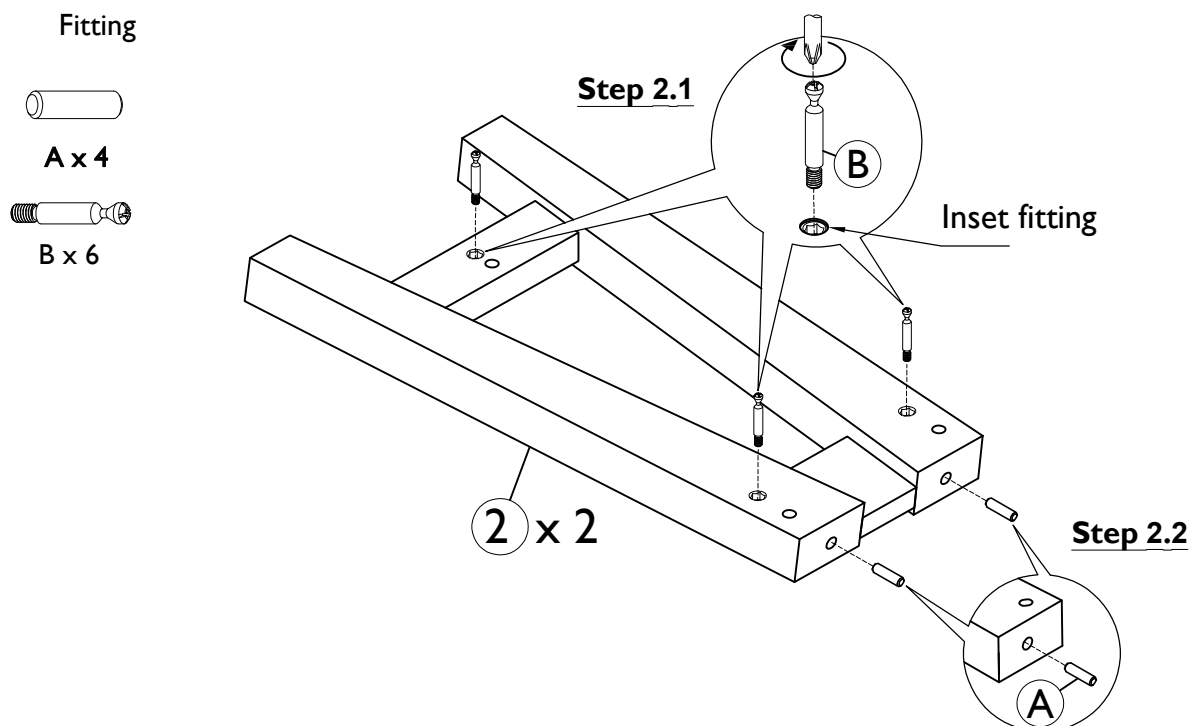
Item	Description	Qty.	Item	Description	Qty.
1	Top Frame	x 1	3	Side Apron	x 2
2	Leg Frame	x 2	4	Stretcher	x 1
A	Wooden dowel Ø10x30mm	x 10	E	Hex head bolt M8x80mm	x 4
B	Steel dowel Ø7x52mm	x 6	G	Flat washer Ø8.4x17x1.6mm	x 4
C	Grub screw M8x8mm	x 6	H	Lock washer Ø8.4x2mm	x 4
D	Housing Ø15x13.5mm	x 6	K	Allen key M4x30x110mm	x 1

Step By Step Assembly Instructions

- Step 1**
- 1.1 : Lay all parts on a flat, stable, clean and soft surface.
 1.2 : Insert 6x wooden dowels (A) into the pre-drilled holes on side aprons (3) and stretcher (4) as shown.

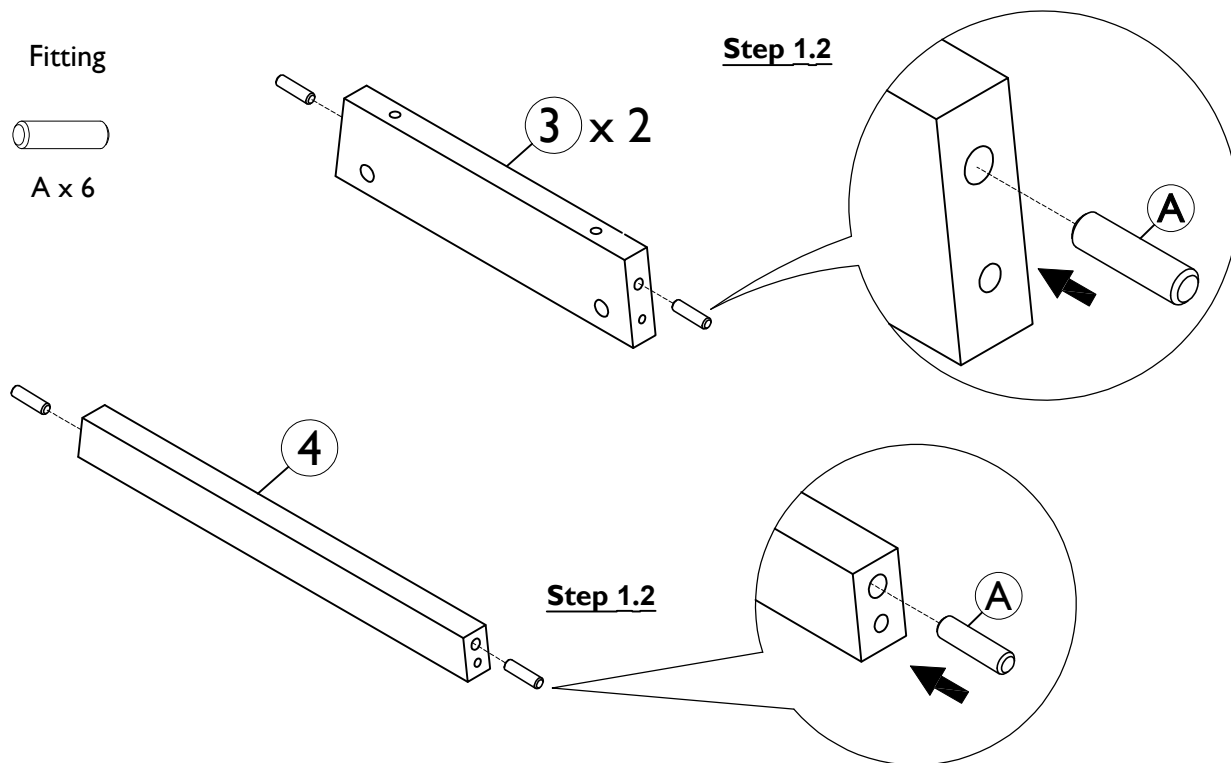


- Step 2**
- 2.1 : Attach 6x steel dowels (B) into leg frame (2) by screwing fittings (B) into the inset fitting that are located on parts (2) as shown. Use a pozi screwdriver to turn fittings (B) clockwise to fix.
 2.2 : Insert 4x wooden dowels (A) into the pre-drilled holes on leg frame (2) as shown.

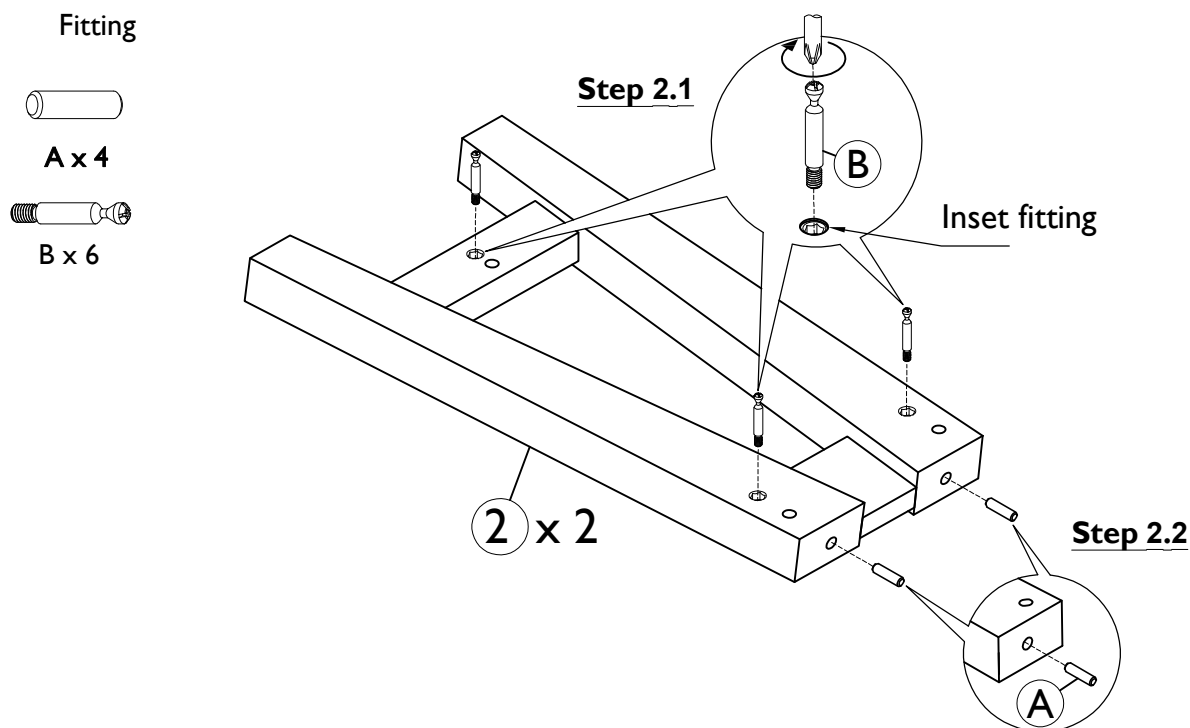


Step By Step Assembly Instructions

- Step 1**
- 1.1 : Lay all parts on a flat, stable, clean and soft surface.
 1.2 : Insert 6x wooden dowels (A) into the pre-drilled holes on side aprons (3) and stretcher (4) as shown.



- Step 2**
- 2.1 : Attach 6x steel dowels (B) into leg frame (2) by screwing fittings (B) into the inset fitting that are located on parts (2) as shown. Use a pozi screwdriver to turn fittings (B) clockwise to fix.
 2.2 : Insert 4x wooden dowels (A) into the pre-drilled holes on leg frame (2) as shown.



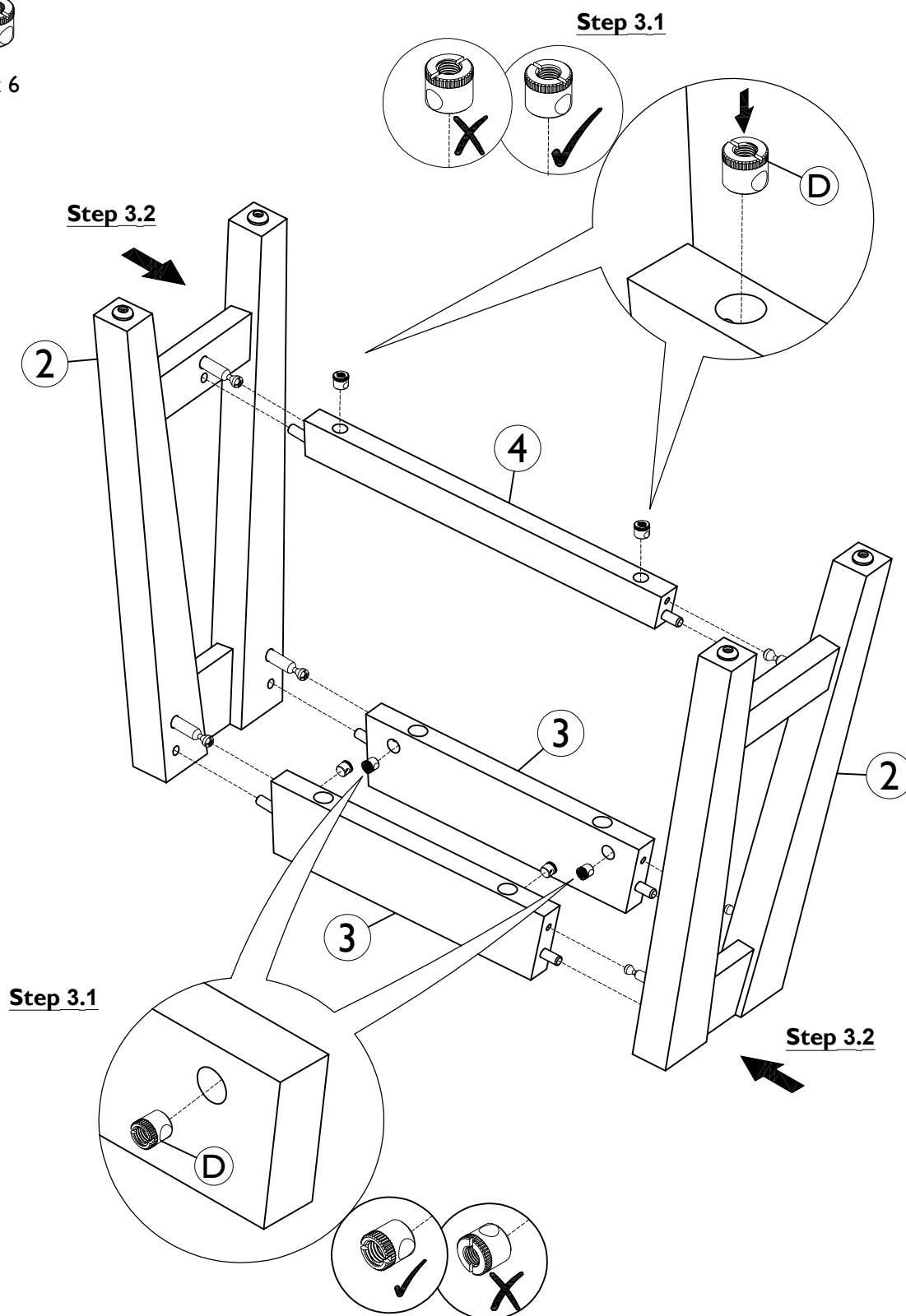
Step By Step Assembly Instructions

- Step 3** 3.1 : Attach 6x housings (D) into the pre-drilled holes on side aprons (3) and stretcher (4) as shown.
- 3.2 : Attach leg frame (2) onto side aprons (3), stretcher (4) as shown . Ensure steel dowel (B), wooden dowels (A) are aligned correctly with the holes of mating parts before attaching.

Fitting

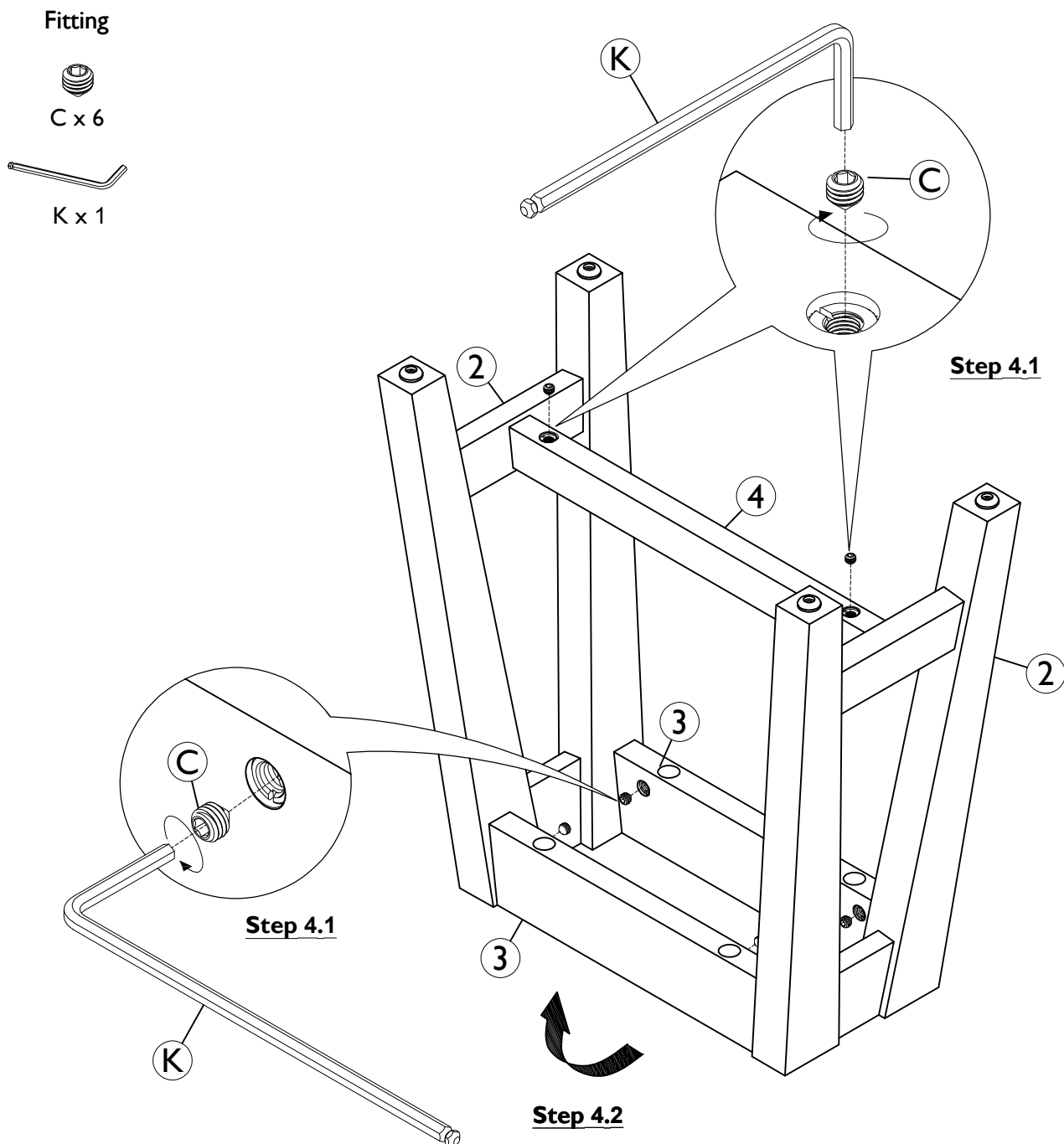


D x 6



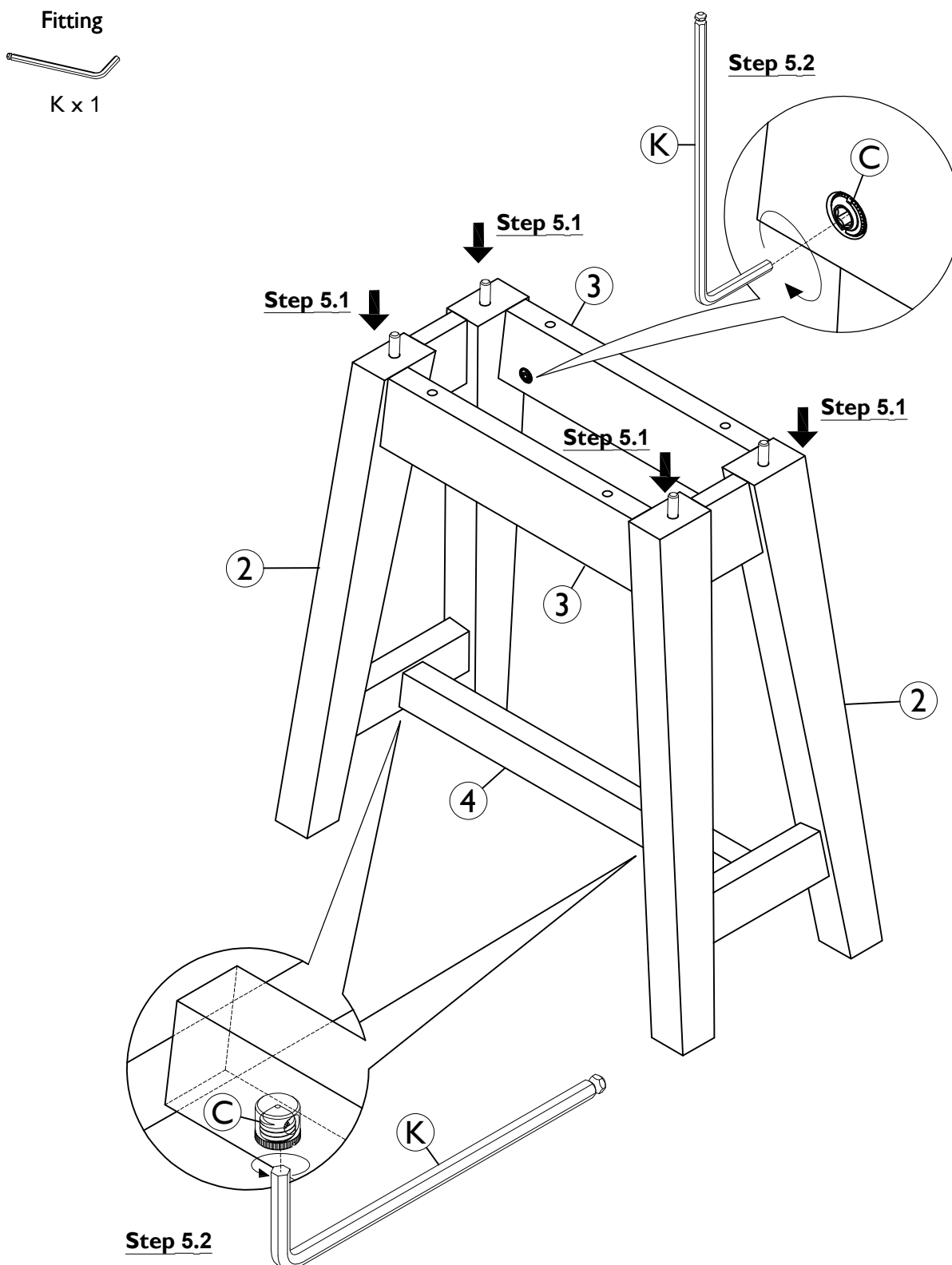
Step By Step Assembly Instructions

- Step 4** 4.1 : Secure parts (3), (4) to parts (2) using 6x grub screws (C) as shown. Use a allen key (K) to turn fittings (C) clockwise fix. **Do not fully tighten grub screw.**
4.2 : Stand the structure assembled in **step 4.1** upright.



Step By Step Assembly Instructions

- Step 5** 5.1 : Make sure all legs frame (2) contact the stable surface evenly.
5.2 : Using allen key (K) slowly tighten all fittings (C) clockwise whilst keeping the table level on the stable surface until all corners (as denoted by the arrows) are securely fastened.
Note: It is best to turn each fitting (C) 1-2 turns each, partially tightening opposite corners and repeating until all fittings are secure.



Step By Step Assembly Instructions

- Step 6**
- 6.1 : Attach the structure assembled in **step 5** onto top frame (1) as shown. Ensure wooden dowels (A) and the pre-drilled holes on side aprons (3) and leg frames (2) are aligned correctly to the holes on top frame (1) before attaching.
- 6.2 : Secure the structure assembled in **step 5** onto top frame(1) using 4x hex head bolts (E), 4x lock washers (H) and 4x flat washers (G) as shown. Use an allen key (K) to turn fittings (E) clockwise to fix.
- 6.3 : Stand the table upright.

