

MAPLE GLAZED HAM FLAVOURED POTATO CRISPS

Nutritional information

Typical Values	Per 50g Serving (1/3 Pack)	Per 100g
Energy	1015 kJ 243 kcal	2029 kJ 485 kcal
Fat	13g	27g
of which Saturates	1.2g	2.4g
Carbohydrate	30g	60g
of which Sugars	0.9g	1.8g
Fibre	1.4g	2.8g
Protein	4.9g	9.8g
Salt	0.46g	0.91g

INGREDIENTS: Potatoes, Vegetable Oil (Sunflower Oil, Rapeseed Oil - varying proportions), Brown Sugar, Sugar, Yeast extract, Salt, Caramelised Sugar, Onion Powder, Natural Flavourings, Yeast Powder, Bay, Citric Acid, Liquorice Powder 0.9%, Paprika Extract, Cassia, Clove, Smoked Maltodextrin

Packed in Protective Atmosphere

Store in a cool, dark place to keep
these crisps at their best for longest
(or eat them straight away!)



BEST BEFORE:

Kiln Roasted Mixed Nuts spiced with Chipotle Chilli & Spices

Ingredients: Nut Mix 89% (**PEANUTS, ALMONDS, CASHEWS**) Sugar, Garlic, Salt, Black Pepper, Chipotle Chilli, Extra Virgin Olive Oil, Smoked Paprika, Coriander

Allergens: See Ingredients in **BOLD**. May contain other Nuts and Sesame. **Store:** In a cool, dark place and, once opened, use within 3 weeks. Best enjoyed swiftly...

Typical Nutrition per 100g

Energy kJ	2328
kcal	558
Fat	46.0 g
- saturates	6.0 g
Carbohydrate	22.0 g
- sugars	12.0 g
Protein	22.0 g
Salt	1.0 g



Oliveered in Dorset, UK
with ingredients from
other countries by
OLIVES ET AL DT10 2GA

T: 01258 474300

W: olivesetal.co.uk

90g e

Multigrain Breadsticks 125gx12p

CHARACTERISTICS

Description	Multigrain Breadsticks with extra virgin olive oil – 125 g box
Ingredients	Unbleached wheat flour, Wheat bran, Cereals flour 6% (wholemeal rye , wholemeal spelt wheat , pearl barley , rice), Extra virgin olive oil (3%), Acacia fibre, Salt, Yeast, Malted wheat flour
Shelf-life	380 days from production day if kept closed in the original pack, in cool and dry place, far from lights and heat.

Average Values for 100g of finished product		Physical and Microbiological values	
Energy	1 629 kJ 386 kcal	Humidity	max 5%
Fat	5.1 g	Ashes	2.7%
▪ Of which saturates	0.9 g		
Carbohydrates	68 g	TPC (Ufc/g)	<100
▪ Of which sugars	2.2 g		
Fibre	10 g	Staph C+(Ufc/g)	<10
Protein	12 g	Yeasts and Moulds (Ufc/g)	<100
Salt	1.8 g		
Allergy information	<u>Contains:</u> Cereals with gluten (wheat, rye, spelt, barley)	<u>May contain:</u> Milk, sesame seeds, soy and mustard.	

Nutritional Information: Caramelised Onion Chutney

Typical Values	Per 100g
Energy	807kj/192kcal
Fats	5.7g
of which saturates	0.4g
Carbohydrate	33.8g
of which sugars	32.3g
Protein	1.0g
Salt	0.3g

Ingredients: Onion (46%), Sugar, Dates (Rice Flour), Malt Vinegar (from **Barley**), Bramley Apples, Rapeseed Oil, Salt, Spice, **Mustard**, Colour: Natural Caramel.

Allergy Advice: For Allergens, see ingredients in **Bold**.
No Artificial Colour or Preservatives.

Best Before End: See Base. Refrigerate once opened.

Navas Garden Tonic Water 200ml

NUTRITION:
TYPICAL VALUES

PER 100ML

ENERGY (kJ)

119

ENERGY (KCAL)

28

CARBOHYDRATE (G)

7.1

OF WHICH SUGARS (G)

7.1

CONTAINS NEGLIGIBLE AMOUNTS
OF FAT, SATURATES, PROTEIN, SALT.

INGREDIENTS:

CARBONATED CORNISH SPRING WATER, SUGAR,
CITRIC ACID, NATURAL FLAVOURINGS INCLUDING
QUININE, CINCHONA BARK EXTRACT.

NAVAS DRINKS, BOJORROW FARM, GARRAS, HELSTON,
CORNWALL TR12 6LN. LICENSED BY THE EDEN PROJECT

BEST BEFORE: SEE BOTTLE NECK
STORE IN A COOL, DRY PLACE.

200ml e





the DORMEN

Luxury Bombay mix

"You know what to expect from a Bombay mix, no doubt? A certain tongue-tingling heat. A toothsome crunch. A fragrant flavour of India. If you find that perfectly satisfactory, allow me to urge you not to try the Dormen Luxury Bombay mix. With the unconventional addition of raisins, I rather fear it may be altogether too much for your taste buds to handle."

NUTRITION INFORMATION:

VALUES	PER 100g
ENERGY	1664kJ 397Kcal
FAT	16g
Of which SATURATES	2.8g
CARBOHYDRATE	49g
Of which SUGARS	29g
FIBRE	12g
PROTEIN	8.7g
SALT	0.90g

INGREDIENTS:

Bombay Mix 85%: (Gram Flour Noodles [Gram Flour, Maize Flour, Potato Starch, Rapeseed Oil, Salt, Turmeric, Chilli, Caraway Seed], **Peanuts** [Peanuts, Rapeseed Oil, Salt], Lentils [Lentils, Rapeseed Oil], Chickpeas [Chickpeas, Rapeseed Oil] Green Split Peas [Green Split Peas, Rapeseed Oil], Spices [Paprika, Fenugreek, Chilli, Cumin, **Mustard**, Coriander, Black Pepper, Cardamom, Turmeric, Ginger, Pimento, Nutmeg, Cayenne, Clove, Cinnamon, Acidity Regulator: Citric Acid]), Golden Raisins 15%: (Raisins, Preservative Sulphur Dioxide, Sunflower Oil).

Allergen Information:

For allergens, please see ingredients in **bold**. May also contain Other Nuts, Milk, Egg, Soya, Sesame Seeds, Celery. Suitable for vegetarians.

Store in a cool, dry place away from strong odours and light. Once opened consume within 5 days if kept in an air tight container.

thedormenfoodcompany.com
The Dormen Food Company,
Wiltshire SN2 8QE

85ge



BEST BEFORE

16/01/25 965709



5 060145 255050 >

Vicenzi Amaretto D'Italia Amaretti, 175g

AMARETTO
 Ingredienti: Zucchero, mandorle d'albicocca 18%, albumi d'uovo*, zucchero di canna 5%, MANDORLE** 1%, LATTOSIO, proteine del LATTE, agente lievitante (carbonato acido di sodio), aroma naturale. **PUO' CONTENERE ALTRA FRUTTA A GUSCIO, GLUTINE.** *Prodotto con uova fresche da allevamento a terra. **Con mandorle di Sicilia. Conservare in luogo fresco ed asciutto, lontano da fonti luminose.

BISCOTTI COOKIES
 Ingredienti: Sugar, apricot kernels 18% (contains SULPHITES), EGG WHITE*, brown sugar 5%, ALMONDS** 1%, LACTOSE, MILK proteins, raising agent (sodium hydrogen carbonate), natural Flavouring, MAY CONTAIN OTHER NUTS, GLUTEN. *Produced with fresh farm eggs. **With Sicilian almonds. Keep cool and dry, away from light sources.

BISCOTTI AMARETTI
 Ingredienti: Zucchero, mandorle d'albicocca 18% (contiene SULFITES), uova d'uovo*, zucchero di canna 5%, AMANDORI** 1%, LACTOSE, proteine del LATTE, agente lievitante (carbonato acido di sodio), aroma naturale. **PUO' CONTENERE ALTRA FRUTTA A GUSCIO, GLUTINE.** *Prodotto con uova fresche da allevamento a terra. **Con mandorle di Sicilia. Conservare in luogo fresco e seco ad angolo di luce.

AMARETTI BOTTIMATA
 Ingredienti: Zucchero, mandorle d'albicocca 18% (contiene SULFITES), ZUCCHERO DI CANNA 5%, AMANDORI** 1%, LACTOSE, proteine del LATTE, agente lievitante (carbonato acido di sodio), aroma naturale. **PUO' CONTENERE ALTRA FRUTTA A GUSCIO, GLUTINE.** *Prodotto con uova fresche da allevamento a terra. **Con mandorle di Sicilia. Conservare in luogo fresco e seco ad angolo di luce.

AMARETTI BOTTIMATA
 Ingredienti: Zucchero, mandorle d'albicocca 18% (contiene SULFITES), ZUCCHERO DI CANNA 5%, AMANDORI** 1%, LACTOSE, proteine del LATTE, agente lievitante (carbonato acido di sodio), aroma naturale. **PUO' CONTENERE ALTRA FRUTTA A GUSCIO, GLUTINE.** *Prodotto con uova fresche da allevamento a terra. **Con mandorle di Sicilia. Conservare in luogo fresco e seco ad angolo di luce.

AMARETTI BOTTIMATA
 Ingredienti: Zucchero, mandorle d'albicocca 18% (contiene SULFITES), ZUCCHERO DI CANNA 5%, AMANDORI** 1%, LACTOSE, proteine del LATTE, agente lievitante (carbonato acido di sodio), aroma naturale. **PUO' CONTENERE ALTRA FRUTTA A GUSCIO, GLUTINE.** *Prodotto con uova fresche da allevamento a terra. **Con mandorle di Sicilia. Conservare in luogo fresco e seco ad angolo di luce.

AMARETTI BOTTIMATA
 Ingredienti: Zucchero, mandorle d'albicocca 18% (contiene SULFITES), ZUCCHERO DI CANNA 5%, AMANDORI** 1%, LACTOSE, proteine del LATTE, agente lievitante (carbonato acido di sodio), aroma naturale. **PUO' CONTENERE ALTRA FRUTTA A GUSCIO, GLUTINE.** *Prodotto con uova fresche da allevamento a terra. **Con mandorle di Sicilia. Conservare in luogo fresco e seco ad angolo di luce.

AMARETTI BOTTIMATA
 Ingredienti: Zucchero, mandorle d'albicocca 18% (contiene SULFITES), ZUCCHERO DI CANNA 5%, AMANDORI** 1%, LACTOSE, proteine del LATTE, agente lievitante (carbonato acido di sodio), aroma naturale. **PUO' CONTENERE ALTRA FRUTTA A GUSCIO, GLUTINE.** *Prodotto con uova fresche da allevamento a terra. **Con mandorle di Sicilia. Conservare in luogo fresco e seco ad angolo di luce.

AMARETTI BOTTIMATA
 Ingredienti: Zucchero, mandorle d'albicocca 18% (contiene SULFITES), ZUCCHERO DI CANNA 5%, AMANDORI** 1%, LACTOSE, proteine del LATTE, agente lievitante (carbonato acido di sodio), aroma naturale. **PUO' CONTENERE ALTRA FRUTTA A GUSCIO, GLUTINE.** *Prodotto con uova fresche da allevamento a terra. **Con mandorle di Sicilia. Conservare in luogo fresco e seco ad angolo di luce.

AMARETTI BOTTIMATA
 Ingredienti: Zucchero, mandorle d'albicocca 18% (contiene SULFITES), ZUCCHERO DI CANNA 5%, AMANDORI** 1%, LACTOSE, proteine del LATTE, agente lievitante (carbonato acido di sodio), aroma naturale. **PUO' CONTENERE ALTRA FRUTTA A GUSCIO, GLUTINE.** *Prodotto con uova fresche da allevamento a terra. **Con mandorle di Sicilia. Conservare in luogo fresco e seco ad angolo di luce.

AMARETTI BOTTIMATA
 Ingredienti: Zucchero, mandorle d'albicocca 18% (contiene SULFITES), ZUCCHERO DI CANNA 5%, AMANDORI** 1%, LACTOSE, proteine del LATTE, agente lievitante (carbonato acido di sodio), aroma naturale. **PUO' CONTENERE ALTRA FRUTTA A GUSCIO, GLUTINE.** *Prodotto con uova fresche da allevamento a terra. **Con mandorle di Sicilia. Conservare in luogo fresco e seco ad angolo di luce.

AMARETTI BOTTIMATA
 Ingredienti: Zucchero, mandorle d'albicocca 18% (contiene SULFITES), ZUCCHERO DI CANNA 5%, AMANDORI** 1%, LACTOSE, proteine del LATTE, agente lievitante (carbonato acido di sodio), aroma naturale. **PUO' CONTENERE ALTRA FRUTTA A GUSCIO, GLUTINE.** *Prodotto con uova fresche da allevamento a terra. **Con mandorle di Sicilia. Conservare in luogo fresco e seco ad angolo di luce.

AMARETTI BOTTIMATA
 Ingredienti: Zucchero, mandorle d'albicocca 18% (contiene SULFITES), ZUCCHERO DI CANNA 5%, AMANDORI** 1%, LACTOSE, proteine del LATTE, agente lievitante (carbonato acido di sodio), aroma naturale. **PUO' CONTENERE ALTRA FRUTTA A GUSCIO, GLUTINE.** *Prodotto con uova fresche da allevamento a terra. **Con mandorle di Sicilia. Conservare in luogo fresco e seco ad angolo di luce.

AMARETTI BOTTIMATA
 Ingredienti: Zucchero, mandorle d'albicocca 18% (contiene SULFITES), ZUCCHERO DI CANNA 5%, AMANDORI** 1%, LACTOSE, proteine del LATTE, agente lievitante (carbonato acido di sodio), aroma naturale. **PUO' CONTENERE ALTRA FRUTTA A GUSCIO, GLUTINE.** *Prodotto con uova fresche da allevamento a terra. **Con mandorle di Sicilia. Conservare in luogo fresco e seco ad angolo di luce.

AMARETTI BOTTIMATA
 Ingredienti: Zucchero, mandorle d'albicocca 18% (contiene SULFITES), ZUCCHERO DI CANNA 5%, AMANDORI** 1%, LACTOSE, proteine del LATTE, agente lievitante (carbonato acido di sodio), aroma naturale. **PUO' CONTENERE ALTRA FRUTTA A GUSCIO, GLUTINE.** *Prodotto con uova fresche da allevamento a terra. **Con mandorle di Sicilia. Conservare in luogo fresco e seco ad angolo di luce.

AMARETTI BOTTIMATA
 Ingredienti: Zucchero, mandorle d'albicocca 18% (contiene SULFITES), ZUCCHERO DI CANNA 5%, AMANDORI** 1%, LACTOSE, proteine del LATTE, agente lievitante (carbonato acido di sodio), aroma naturale. **PUO' CONTENERE ALTRA FRUTTA A GUSCIO, GLUTINE.** *Prodotto con uova fresche da allevamento a terra. **Con mandorle di Sicilia. Conservare in luogo fresco e seco ad angolo di luce.

AMARETTI BOTTIMATA
 Ingredienti: Zucchero, mandorle d'albicocca 18% (contiene SULFITES), ZUCCHERO DI CANNA 5%, AMANDORI** 1%, LACTOSE, proteine del LATTE, agente lievitante (carbonato acido di sodio), aroma naturale. **PUO' CONTENERE ALTRA FRUTTA A GUSCIO, GLUTINE.** *Prodotto con uova fresche da allevamento a terra. **Con mandorle di Sicilia. Conservare in luogo fresco e seco ad angolo di luce.

TIPTREE CHRISTMAS PUDDING

Ingredients: Vine Fruits (28%) (Sultanas, Currants, Raisins), Sugar, Cider, Breadcrumbs [**Wheat** Flour (**Wheat** Flour, Calcium Carbonate, Iron, Niacin, Thiamine), Salt, Yeast], Citrus Peel (Orange Peel, Lemon Peel, Glucose-Fructose Syrup, Sugar, Acidity Regulator: Citric Acid), Whole **Eggs**, 'Tawny' Orange Marmalade (Sugar, Seville Oranges), **Wheat** Flour (**Wheat** Flour, Calcium, Iron, Niacin, Thiamine), Brandy, Rapeseed Oil, Mixed Spice, Salt.

Allergy Advice: For allergens, including cereals containing gluten, see ingredients in **bold**

Heating Instructions: This pudding is cooked and requires heating only. For best results, remove cellophane and steam in the basin for approximately 1 ½ hours. Take care that water does not enter the pudding.

0



Made in England

UK Consumer Care Line: +44 (0) 800 3281749
Wilkin & Sons Ltd., Tiptree, Essex. CO5 0RF

Nutritional Information Typical Values per 100g

Energy	1291 kJ/305 kcal
Fat	4.1g
of which saturates	0.4g
Carbohydrate	62g
of which sugars	49g
Protein	3.6g
Salt	0.67g

www.tiptree.com

454g

Best Before End:

DEC 2024
L1201

Loison Pannetone 500g

Ingredients: WHEAT flour, Sultanas, Candied peels of oranges from Sicily and lemon from Calabria [Orange and lemon peels in varying proportion, Glucose-fructose syrup, Sugar, Concentrated lemon juice], EGGS, BUTTER, Sugar, Natural sourdough yeast, EGG yolk, mono and diglycerides of vegetable fat acids, Wildflower honey from Sicily, MILK, CREAM, sea salt, Cocoa butter, Natural Mananara vanilla from Madagascar, Natural flavouring

SKU: 979892

Allergens WHEAT, MILK, EGG

FOR EUROPEAN ONLY

DICHIARAZIONE NUTRIZIONALE · NUTRITION DECLARATION DÉCLARATION NUTRITIONNELLE · NÄHRWERTE · INFORMA- CION NUTRICIONAL · VOEDINGSWAARDE-INFORMATIE	Per 100 g		
		Per 80g*	%RI**
VALORE ENERGETICO · ENERGY · ÉNERGIE ENERGIE · VALOR ENERGETICO · ENERGIE	1590Kj 380Kcal	1272Kj 304Kcal	15%
GRASSI · FAT · MATIÈRES GRASSES FETT · GRASA · VETTEN	16g	13g	18%
di cui Saturi · of which Saturates · dont Acides Gras Saturés · davon gesättigte Fettsäuren · de los cuales Saturado · waarvan verzadigde Vetturen	8.6g	6.9g	34%
CARBOIDRATI · CARBOHYDRATE · GLUCIDES · KOHLENHYDRATE HIDRATOS DE CARBONO · KOOLHYDRATEN	51g	41g	16%
di cui Zuccheri · of which Sugars · dont Sucres · davon Zucker de los cuales el Azúcar · waarvan Zuikers	29g	23g	25%
FIBRE ALIMENTARI · FIBERS · FIBRES ALIMENTAIRES BALLASTSTOFFE · FIBRA DIETETICA · VEZELS	1.6g	1.3g	--
PROTEINE · PROTEIN · PROTEINES EIWEISS · PROTEINA · EIWITTEN	7.4g	5.9g	12%
SALE · SALT · SEL SALZ · SAL · ZOUT	0.62g	0.5g	8%

*Peso di una porzione · Portion weight · Poids d'une portion · Gewicht einer Portion · Porción del servicio · Gewicht van een portie.

**RI% delle assunzioni di riferimento di un adulto medio (8400 kJ/2000 kcal) · Reference intake of an average adult (8400 kJ/2000 kcal)

Apport de référence pour un adulte-type (8400 kJ/2000 kcal) · Referenzmenge für einen durchschnittlichen Erwachsenen (8400 kJ/2000 kcal)

Ingestas de referencia de un adulto promedio (8400 kJ/2000 kcal) · Referentie-inname van een gemiddelde volwassene (8400 kJ/2000 kcal).

Mrs Darlington's Damson Jam, 340g

Ingredients



Sugar, damsons, gelling agent: pectin.

Prepared with 49 grams of fruit per 100 grams.

Total sugar content 65 grams per 100 grams.

No added colour or preservatives.

This product may contain stones.

340g.

Nutritionals

Energy 988kj – 233kcal

Fat 0

Of which saturates 0

Carbohydrate 58.4

Of which Sugars 58.3

Protein 0.4

Salt 0

Rendels Chicken Pâté, 180g

Pork jowl 50%, chicken liver 38%, MILK, EGGS, salt,
Cognac 1%, spices, natural flavourings.

**CHOCOLATE FUDGE / WEICHES KAREMELL MIT
SCHOKOLADE / CARMELS MOUS AU CHOCOLAT /
KRÓWKI CZOKOLADOWE**

GB - INGREDIENTS: Sugar, Sweetened Condensed **Milk**, Salted Butter (**Milk**), Glucose Syrup, Golden Syrup, Cocoa Mass (3.5%), Humectant: Glycerine.

DE - ZUTATEN: Zucker, Gesüßte Kondens**milch**, Gesalzene Butter (**Milch**), Glukosesirup, Goldener Sirup, Kakaomasse (3.5%), Feuchthaltemittel: Glycerin.

FR - INGRÉDIENTS: Sucre, **Lait** Concentré Sucré, Beurre Salé (**Lait**), Sirop de Glucose, Sirop Doré, Masse de Cacao (3.5%), Humectant: Glycérine.

PL - SKŁADNIKI: Cukier, Słodzone **Mleko** Skondensowane, Masło Solone (**Mleko**), Syrop Glukozowy, Syrop Złocisty, Masa Kakaowa (3.5%), Substancja Pochłaniająca Wilgoć: Gliceryna.

**Nutrition information / Nährwertinformation /
Information nutritionnelle / Wartość odżywcza**

Typical values / Typische Werte / Valeurs moyennes / Typowe wartości	Per / Pro / Pour / w 100g
Energy / Energie / Énergie / Wartość energetyczna	1954kJ/ 465kcal
Fat / Fett / Matière grasse / Tłuszcze	18g
Of which saturates / davon gesättigte Fettsäuren / dont acides gras saturés / w tym tłuszcze nasycone	12g
Carbohydrates / Kohlenhydrate / Glucides / Węglowodany	73g
Of which sugars / davon Zucker / dont sucres / w tym cukry	73g
Protein / Eiweiß / Protéine / Białko	2.1g
Salt / Salz / Sel / Sól	0.30g

ALLERGY ADVICE

GB - For allergens: see ingredients in **bold**

DE - Allergene: siehe **fettgedruckte** Bestandteile

FR - Pour les allergènes: voir les ingrédients en **gras**

PL - Alergeny: zob. składniki **wytluszczonym** drukiem

Gluten Free / Glutenfrei / Sans gluten / Bezglutenowy

Suitable for vegetarians / Für Vegetarier geeignet / Convient
aux végétariens / Odpowiednie dla wegetarian - GMO Free

GB - STORAGE: Store in a cool, dry place and out of direct
sunlight. Store in an airtight container after opening.

DE - LAGERUNG: In einem kühlen, trockenen Platz und
ausserhalb des Sonnenlichtes lagern. Nach dem Öffnen in
einem luftdichten Behälter lagern.

FR - CONSERVATION: À conser ver dans un endroit frais et
sec, à l'abri des rayons du soleil. À conserver dans un
recipient hermétique après l'ouverture.

PL - PRZECHOWYWANIE: Przechowywać w chłodnym,
suchym miejscu, unikając bezpośredniego światła
słonecznego. Po otwarciu przechowywać w hermetycznym
pojemniku.

Produced in Scotland (UK) / Hergestellt in Schottland (GB)
/ Produit en Écosse (RU) / Wyprodukowane w Szkocji (GB)

GB - Best before - see base of pack / **DE** - Mindestens
haltbar bis - siehe Packungsunterseite / **FR** - À consommer
de préférence avant - voir le dessous de l'emballage /

PL - Najlepiej spożyć przed - patrz dolna część opakowania

TILLY CONFECTIONERY LTD

GB - 5 CENTRAL BOULEVARD, LARBERT FK5 4RU

EU - 32 MERRION ST UPPER, DUBLIN 2 D02 KW80

WWW.MRSTILLYS.CO.UK



150ge

SCOTTISH
OAT
CRUMBLES
COLLECTION

INGREDIENTS: **Wheat** flour (with calcium carbonate, iron, niacin, thiamin), Vegetable oils (palm, rapeseed), Sugar, **Oats** (32%), Golden syrup, Ginger crush (5%) (stem ginger, sugar, water), Ground Ginger, Raising agents (diphosphates, sodium carbonates), Salt, Emulsifier (polyglycerol esters of fatty acids), Flavourings, Colour (curcumin, annatto).

Allergen advice: For Allergens, including Cereals containing gluten, see ingredients in bold. May also contain tree nuts.

NUTRITIONAL INFORMATION

Nutritional Info:	per 100g
Energy:	2152 kJ / 515 kcal
Fat:	26.7g
as Saturates:	8.6g
Carbohydrates:	62.3g
as Sugars:	29.4g
Protein:	5.0g
Salt:	0.9g

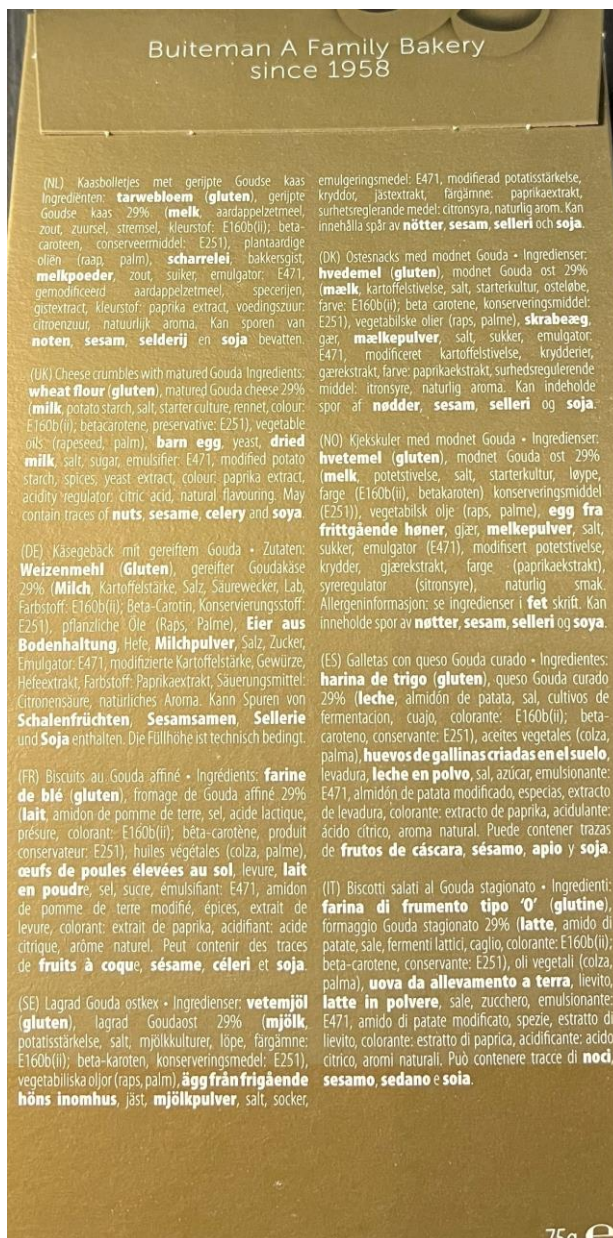


5 060029 964351

Storage Instructions: Store in a cool, dry place. Once opened, keep in an airtight container.

Guarantee: If you are not satisfied with your purchase, please return the product and packaging stating where and when it was purchased.

150g e 5.3oz



Nutritional data

Typical Values per 100g

Energy 2307kJ/554kcal

Fat 36g

of which saturates 16g

Carbohydrate 43g

of which sugars 1,2g

Protein 13g

Salt 2,3g

Hamlet Belgian Chocolate Assortment, 250g

(NL) Assortiment van pralines - Ingrédients: suiker, volle melkpoeder, cacao massa, cacao boter, hazelnooten 6%, gesuikerde gecondenseerde volle melk, palmvet, glucosestroop, boterolie (melk), melksuiker, dextrose, alcohol, koffie-extract 0,04%, emulgator: sojalecithine, stabilisator: E420ii, aroma's: karamel, framboos, sinaasappel en vanille. Chocolade: ten minste 50% cacaobestanddelen. Melkchocolade: ten minste 29% cacaobestanddelen. Witte chocolade: ten minste 23% cacaobestanddelen. Kan sporen van andere noten bevatten. Koel en droog bewaren. Gefabriceerd in België. **(FR)** Assortiment de bonbons de chocolat - Ingrédients: sucre, lait entier en poudre, pâte de cacao, beurre de cacao, noisettes 6%, lait entier concentré sucre, graisse de palme, sirop de glucose, huile butyrique (lait), sucre du lait, dextrose, alcool, extrait de café 0,04%, émulsifiant: lécithine de soja, stabilisant: E420ii, arômes: caramel, framboise, orange et vanille. Cacao: 50% min. (dans le chocolat), Cacao: 29% min. (dans le chocolat au lait), Cacao: 23% min. (dans le chocolat blanc). Peut contenir des traces d'autres fruits à coque. À conserver au sec et au frais. Fabriqué en Belgique. **(EN)** Assorted chocolates - Ingredients: sugar, whole milk powder, cocoa mass, cocoa butter, hazelnuts 6%, sweetened condensed whole milk, palm fat, glucose syrup, butter oil (milk), milk sugar, dextrose, alcohol, coffee extract 0,04%, emulsifier: soy lecithin, stabilizer: E420ii, flavourings: caramel, raspberry, orange and vanilla. Cocoa solids: chocolate: min. 50%, milk chocolate: min. 29%, white chocolate: min. 23%. Milk solids: milk chocolate: min. 24%, white chocolate: min. 27%. May contain traces of other nuts. Keep cool and dry. Made in Belgium. Imported by: World Wide Imports Ltd, Unit 12, Harvard Hub, 1 Stark Drive, Christchurch 8042, New Zealand. **(DE)** Sortiment Pralinen - Zutaten: Zucker, Vollmilchpulver, Kakao massa, Kakaobutter, Haselnüsse 6%, gezuckerte Kondensmilch, Palmfett, Glukosesirup, Butteröl (Milch), Milchsücker, Dextrose, Alkohol, Kaffee-Extrakt 0,04%, Emulgator: Sojalecithine, Stabilisator: E420ii, Aromen: Karamel, Himbeere, anderen Schalenfrüchten enthalten. Kühl und trocken lagern. Hergestellt in Belgien. **(IT)** Assortimento di praline - Ingredienti: zucchero, latte intero in polvere, pasta di cacao, burro di cacao, nocciolo 6%, latte intero condensato zuccherato, grasso di palma, sciroppo di glucosio, olio butirico (latte), zucchero di latte, destrosio, alcol, estratto di caffè 0,04%, emulsionante: lecitina di soia, stabilizzante: E420ii, aromi: caramello, lampone, arancio e vaniglia. Componenti del cacao: cioccolato min. 50%, cioccolato al latte min. 29%, cioccolato bianco min. 23%. Può contenere tracce di altra frutta a guscio. Conservare in luogo fresco ed asciutto. Prodotto in Belgio. **(ES)** Surtido de bombones de chocolate - Ingredientes: azúcar, leche entera en polvo, pasta de cacao, manteca de cacao, avellanas 6%, leche entera condensada azucarada, grasa de palma, jarabe de glucosa, aceite de manteca (leche), azúcar de la leche, dextrosa, alcohol, extracto de café 0,04%, emulgente: lecitina de soja, estabilizante: E420ii, aromas: caramelo, frambuesa, naranja y vainilla. Porcentaje de cacao: Chocolate: cacao: 50% mínimo; Chocolate con leche, cacao: 29% mínimo; Chocolate blanco, cacao: 23% mínimo. Puede contener trazas de otros frutos de cáscara. Conservar en lugar fresco y seco. Producido en Bélgica. **(SV)** Blandning av praliner - Ingredienser: socker, helmjölkspulver, kakaomassa, kakaosmör, hasselnötter 6%, sotad kondenserad helmjölk, palmfett, glukossirap, smörolja (mjölk), mjölksocker, dextros, alkohol, kaffeextrakt 0,04%, emulgeringsmedel: sojalecitin, stabilisator: E420ii, aromer: karamell, hallon, apelsin och vanilj. Kakaohalt: choklad: min. 50%, mjölkchoklad: min. 29%, vit choklad: min. 23%. Kan innehålla spår av andra nötter. Förvaras svalt och torrt. Tillverkad i Belgien. **(CS)** Cokoládové bonbony formované - Složení: cukr, susené plnotučné mléko, kakaová hmota, kakaové máslo, liskové ořechy 6%, slazené kondenzované plnotučné mléko, palmový tuk, glukózový sirup, maslový olej 50%, v mléčné cokoládě nejméně 29%, v bílé cokoládě nejméně 23%. Může obsahovat stopy dalších ořechů. Uchovávejte v suchu a chladu. Zeme původu: Belgie.

Min. +5°C/41°F - Max. +20°C/68°F
 Hamlet nv - Kerkstraat 77 - BE-9120 Vrasene - Tel: +32 3 750 99 50
 10 porties van/ portions de/ servings of/ Portionen a/ porzioni di/ porciones de/ portionen av/ porce 25 g
 20 (*) stuks/ pieces/ pieces/ Stücke/ pezzi/ piezas/ styck/ kusi
 Nettogewicht/ Poids net/ Net weight/ Nettogewicht/ Peso netto/ Peso neto/ Nettovikt/ Hmotnost: 119.02.1001V032018

250 g e Net wt. 8.8 oz

Ten minste houdbaar tot/À consommer de préférence avant le/Best before/Mindestens haltbar bis/Da consumarsi preferibilmente entro il/Consumir preferentemente antes del/Bäst före/Minimální trvanlivost do: 03/10/2023

Voedingswaarden/ Valeurs nutritionnelles/ Nutrition information/ Durchschnittliche Nährwerte/ Valori nutrizionali/ Valores nutricionales/ Näringsvärdena/ Výživové hodnoty	100g	25g 2 (*)
Energie/Energie/Energy/Energie/Energia/Valor energético/Energi/ Energetická hodnota:	2200 kJ 526 kcal	550 kJ 132 kcal
Vetten/ Matières grasses/ Fat/Fett/Grassi/Grasas/Fett/Tuky:	30g	7,6g
- waarvan verzadigde vetzuren/ dont acides gras saturés/ of which saturates/ davon gesättigte Fettsäuren/ di cui acidi grassi saturi/ de las cuales saturadas/ varav mättat fett/ z toho nasycené mastné kyseliny:	16g	4,1g
Koolhydraten/ Glucides/ Carbohydrate/ Kohlenhydrate/ Carboidrati/ Hidratos de carbono/ Kolhydrat/ Sachandy:	56g	14g
- waarvan suikers/ dont sucres/ of which sugars/ davon Zucker/ di cui zuccheri/ de los cuales azúcares/ varav sockerarter/ z toho cukry:	54g	13g
Eiwitten/ Protéines/ Protein/ Eiweiß/ Proteine/ Proteínas/ Protein/ Bilkoviny:	6,2g	1,6g
Zout/ Sel/ Salt/ Salz/ Sal/ Salt/ Sól:	0,16g	0,04g

CARTWRIGHT ENGLAND & BUTLER

THESE CRISPY WAFER ROLLS OOZING WITH A CREAMY COCOA CREAM FILLING ARE DELICIOUSLY IRRESISTIBLE. ENJOY!

CRISPY WAFER ROLLS WITH COCOA CREAM FILLING

INGREDIENTS (EN)

Sugar, Palm Fat, **Wheat** Flour (Calcium, Iron, Niacin, Thiamin), Whey Powder (**Milk**), Skimmed **Milk** Powder, Low Fat Cocoa Powder (3.2%), Rapeseed Oil, Colour: Ammonia Caramel, Flavours, Salt.

For allergens, see ingredients in **bold**. May contain Eggs, Sesame Seeds, Peanuts, Nuts.

NUTRITIONAL (PER 100G)

Energy 2196kJ / 525kcal, Fat 28.0g, of which Saturates 12.0g, Carbohydrate 61.0g, of which Sugars 45.0g, Fibre 1.9g, Protein 5.5g, Salt 0.2g.

BEST BEFORE SEE BASE OF PACK.

KNUSPRIGE WAFFEL MIT KAKAOCREMEFÜLLUNG

ZUTATEN (DE)

Zucker, Palmfett, **Weizenmehl** (Kalzium, Eisen, Niacin, Thiamin), Molkenpulver (**Milch**), Magermilchpulver, Entöltes Kakaopulver (3.2%), Rapsöl, Farbstoff: Ammoniak Karamell, Aromen, Salz.

Allergene Zutaten sind **fett gedruckt**. Kann Spuren von Eier, Sesam, Erdnüsse und Nüssen enthalten.

NÄHRWERTE (PRO 100G)

Brennwert 2196kJ / 525kcal, Fett 28.0g, Davon Gesättigte Fettsäuren 12.0g, Kohlenhydrate 61.0g, Davon Zucker 45.0g, Ballaststoffe 1.9g, Eiweiss 5.5g, Salz 0.2g.

Mindestens haltbar bis: Siehe Bodenaufdruck.

GAUFRETTE CROUSTILLANTE FOURRÉE À LA CRÈME DE CACAO

INGRÉDIENTS (FR)

Sucre, Graisse de Palme, Farine de **Blé** (Calcium, Fer, Niacine, Thiamine), Poudre de Lactosérum (**Lait**), **Lait** écrémé en Poudre, Maigre de Cacao en Poudre (3.2%), Huile de Colza, Colorant: Ammoniac Caramel, Arômes, Sel.

Pour les allergènes voir les ingrédients en **gras**.

Peut aussi contenir des traces de (Œufs, Graines de Sésame, Cacahuètes et des Fruits à Coque.

NUTRITIONNELLES (POUR 100G)

Énergie 2196kJ / 525kcal, Graisses 28.0g, dont Saturés 12.0g, Glucides 61.0g, dont Sucres 45.0g, Fibres Alimentaires 1.9g, Protéines 5.5g, Sel 0.2g.

À consommer de préférence avant: voir emballage.

ONCE OPENED STORE IN A COOL, DRY PLACE, IN AN AIRTIGHT CONTAINER.

MADE IN POLAND FOR CARTWRIGHT & BUTLER
PO BOX 298 BEVERLEY HU17 6FG UK
CARTWRIGHT & BUTLER, JOYCE HOUSE, 21-23 HOLLES STREET,
DUBLIN 2, IRELAND

CARTWRIGHT & BUTLER® IS A REGISTERED TRADEMARK

cartwrightandbutler.co.uk

150g e

Pierniki lukrowane / Iced Gingerbread / Turte dulci cu glazură de zahăr
20% lukru / Icing 20% / 20% glazură

PL Składniki: cukier, mąka pszenna, mąka żytnia, barwnik (karmel), substancja spulchniająca (węglany amonu), jaja w proszku, substancja zagęszczająca (guma arabska), przyprawy, sól, regulator kwasowości (kwas cytrynowy). Może zawierać mleko, soję, orzeszki arachidowe, migdały i inne orzechy, nasiona sezamu.
WYPRODUKOWANO W POLSCE

EN Ingredients: sugar, wheat flour, rye flour, colour (caramel), raising agent (ammonium carbonates), powdered eggs, thickener (gum arabic), spices, salt, acidity regulator (citric acid). May contain milk, soy, peanuts, almonds and other nuts, sesame seeds. PRODUCED IN POLAND

RO Ingredient: zahăr, făină de grâu, făină de secară, colorant (caramel simplu), agent de afânare (carbonați de amoniu), ouă praf, agent de îngroșare (gumă arabică), condimente, sare, regulator de aciditate (acid citric). Produsul poate să conțină lapte, soia, arahide, migdale și alte fructe cu coajă lemnoasă, semințe de susan. FABRICAT ÎN POLONIA

Masa netto: / Net weight: / Cantitatea netă: **160 g / 5.64 OZ**

Najlepiej spożyć przed końcem: / Nr partii - na folii: / Best before end: / Lot number - on the foil.
A se consuma de preferință înainte de sfârșitul: / Numărul lotului - pe folie.

Wartość odżywcza / Nutrition value /	w 100 g /
Valori nutriționale	per 100 g
Wartość energetyczna / Energy /	1520 kJ / 358 kcal
Valoare energetică	
Tłuszcz / Fat / Grăsimi	1,1 g
w tym kwasy tłuszczowe nasycone / of which saturated / din care acizi grași saturați	0,3 g
Węglowodany / Carbohydrate / Glucide	80 g
w tym cukry / of which sugars / din care zaharuri	44 g
Białko / Protein / Proteine	5,0 g
Sól / Salt / Sare	0,15 g



POLSKA
FABRYKA

Fabryka Cukiernicza KOPERNIK S.A.
ul. Żółkiewskiego 34, 87-100 Toruń, POLSKA
www.kopernik.com.pl
e-mail: kopernik@kopernik.com.pl



Przechowywać w suchym i chłodnym miejscu.
Store in dry and cool place



6 LUXURY MINCE PIES Only the finest ingredients have been carefully selected to create these aromatic mince pies. The delicious all butter pastry is packed with luxuriously rich mince, infused with 12 Year Old Glenfiddich® Single Malt Scotch Whisky. They have been created in the heart of Speyside by two of Scotland's finest family companies to a traditional recipe by the Walker family, who have been baking in the village of Aberlour since 1898.

NUTRITION

Typical values /Valeurs moyennes/Typische Werte/Valores medios	Per 100g
Energy kJ/Energie/Brennwert/Valor energético	1680 kJ
Energy kcal	400 kcal
Fat/Lipides/Fett/Grasas	15.0 g
of which saturates/dont acides gras saturés/davon gesättigt/de las cuales saturadas	7.8 g
Carbohydrate/Glucides/Kohlenhydrate/Carbohidratos	61.7 g
of which sugars	40.5 g
/dont sucres/davon Zucker/de los cuales azúcares	
Fibre/Fibres/Ballaststoffe/Fibra	1.9 g
Protein/Protéines/Eiweiß/Proteínas	3.6 g
Salt/Sel/Salz/Sal	0.23 g

The aromatic Single Malt Scotch Whisky comes from the Glenfiddich Distillery in the neighbouring village of Dufftown where they have been making fine Malt Whisky since 1887. The strong family traditions of both Walkers and Glenfiddich ensure that the craftsmanship and quality of ingredients remain unchanged and these mince pies are as good today as they have always been.

LUXURY MINCE PIES Ingredients: Fruit mince (47%) (sugar, apple purée, currants, sultanas, crystallised stem ginger (stem ginger, sugar), Glenfiddich whisky (3.5%), candied citrus peel (glucose-fructose syrup, orange peel, sugar, lemon peel, acidity regulator: citric acid), vegetable suet (palm oil, rice flour, sunflower oil), cornflour, mixed spice, acid: acetic acid; natural flavouring), **wheat flour** (wheat flour, calcium carbonate, iron, niacin, thiamin), butter (**milk**) (14%), sugar, salt. For allergens, including cereals containing gluten, see ingredients in **bold**. May also contain nuts and egg. Store in a cool dry place.

HEATING GUIDELINES

- Remove all packaging including foil containers.
- Enlever l'emballage y compris les recipients en aluminium.
- Entfernen Sie die gesamte Verpackung, einschließlich der Folienbehälter.
- Retire todo el material de embalaje, envases de aluminio inclusive.

MICROWAVE: Cat B- 650W Cat D- 750W



After heating leave to stand for 1 minute

- Care should be taken when eating this product after heating as the filling can be extremely hot.
- Attention, après réchauffage, la garniture peut être extrêmement chaude.
- Beachten Sie beim Verzehr dieses Produktes bitte, dass die Füllung nach dem Aufwärmen außerordentlich heiß sein kann.
- Debe tener cuidado al consumir este producto tras su calentamiento, ya que podría quemarse con el relleno.

TARTELETES FOURRÉES AUX FRUITS SECS Ingrédients: Mélange de fruits secs et d'épices (47%) (sucre, purée de pommes, raisins de Corinthe, raisins de Smyrne, gingembre confit (gingembre, sucre), Glenfiddich whisky (3.5%), écorce d'agrumes confite (sirop de glucose, écorce d'orange, sucre, écorce de citron, régulateur d'acidité: acide citrique), graisse végétale (huile de palme, farine de riz, huile de tournesol), maïzena, mélange d'épices, acide: acide acétique; arôme naturel), farine de **blé** (farine de **blé**, carbonate de calcium, fer, niacine, thiamine), beurre (**lait**) (14%), sucre, sel. Les allergènes, y compris les céréales qui contiennent du gluten, sont indiqués en **gras**. Présence éventuelle de fruits à coque et d'œufs. À conserver dans un endroit frais et sec. **PRODUIT D'ÉCOSSE.**

TÖRTCHEN MIT KANDIERTEN FRÜCHTEN Zutaten: Kandierter Früchte (47%) (Zucker, Apfelpüree, Korinthen, Sultaninen, kandierter Stengel Ingwer (Stengel Ingwer, Zucker), Glenfiddich Whisky (3.5%), Zitronat und Orangeat (Glucose-Fructose-Sirup, Orangenschale, Zucker, Zitronenschale, Säureregulator: Zitronensäure), pflanzlicher Talg (Palmöl, Reismehl, Sonnenblumenöl), Maisstärke, Gewürzmischung, Säure: Essigsäure; natürliche Aromastoffe), **Weizenmehl** (**Weizenmehl**, Kalziumkarbonat, Eisen, Niacin, Thiamin), Butter (aus **Milch**) (14%), Zucker, Salz. Allergene, einschließlich glutenhaltiger Zerealien, siehe **fettgedruckte**. Kann auch Nüsse und Eier enthalten. Kühl und trocken lagern.

HERGESTELLT IN SCHOTTLAND. TARTALETAS DE FRUTAS PASAS Ingredientes: Picadillo de frutas pasas y especias (47%) (azúcar, puré de manzana, pasas de Corinto, pasas sultanas, jengibre confitado (jengibre en conserva, azúcar), Glenfiddich whisky (3.5%), cáscaras de cítricos confitados (jarabe de glucosa-fructosa, cáscara de naranja, azúcar, cáscara de limón, corrector de la acidez: ácido cítrico), grasa vegetal (aceite de palma, harina de arroz, aceite de girasol), almidón de maíz, mezcla de especias, ácido: ácido acético; aromatizante natural), harina de **trigo** (harina de **trigo**, carbonato de calcio, hierro, niacina, tiamina), mantequilla (**leche**) (14%), azúcar, sal. Los alérgenos, incluidos los cereales con gluten, aparecen marcados en **negrita**. Puede también contener frutos secos de cáscara y huevos. Conservar en un lugar fresco y seco. **PRODUCTO DE ESCOCIA.**



Vintage Victorian - Afternoon Tea

80 Teabags / 80 Bolsitas de té / 80 Sachets de Thé

Packed for the United Kingdom in India, using fine quality Assam and Nilgiri Teas. Emballé pour le Royaume-Uni en Inde utilisant les thés de qualité d'Assam et de Nilgiri. Embalado para el Reino Unido en la India usando los té de calidad de Assam y de Nilgiri.

Ingredients: Tea Ingredientes: Té Ingrédients: Thé

Net Wt: / Poids Net: / Peso Neto: 160g e 5.6 oz

New English Teas is committed to ethical sourcing. We use our best efforts to ensure that all the people involved in producing this blend for you to enjoy have been treated fairly.

For a full, fresh flavour, this tea should be brewed in boiling water for three to four minutes.

Please visit www.newenglishteas.com for more details about our speciality teas, infusions and trading policies.

New English Teas, Spitfire Close, Coventry
Business Park, Coventry, England CV5 6UR

© New English Teas 2020

Best Before End:
Consomir Preferentement antes del fin de:
A consommer de préférence avant la fin de:

03/2027

Lot No: 24075



MD04

5 013111 005333 >

Holdsworth Milk Chocolate Praline Truffles

Milk Chocolate: Cocoa Solids 33% min. Milk Solids 22% min.

Ingredients: Milk Chocolate 72% (Sugar, Cocoa Butter, Whole **Milk** Powder, Cocoa Mass, Emulsifier: **Soya** Lecithin, Natural Vanilla Flavouring), Praline Paste 25% (Sugar, **Hazelnuts**), Puffed Rice 4% (Rice, Sugar, Salt, **Barley** Malt Flavouring).

For allergens, see ingredients in **bold**.

Contains **hazelnuts** & **barley**. May contain traces of **peanuts**, other **tree nuts** & **gluten**.

Suitable for Vegetarians. Palm Oil Free.

Store in cool, dry conditions 12-18°C away from strong odours and direct sunlight.

Nutrition information typical values

	Per 100 g	Per chocolate (AV. 12 g)
Energy	2199 kJ / 527 kcal	264 kJ / 63 kcal
Fat	29 g	3 g
of which saturates	13 g	1 g
Carbohydrate	55 g	6.7 g
of which sugars	51 g	6 g
Protein	7 g	0.9 g
Salt	0.2 g	0.02 g



Proudly making your chocolates with 100% renewable energy



LUKER Chocolate
Sustainable & Ethically
Sourced Single Origin
Columbian Cocoa



The authentic handmade
English chocolate experience



BOX Recycle



CELLOPHANE BAG
RECYCLE

Net weight 100g e 3.5oz Made in Great Britain

Holdsworth Chocolates

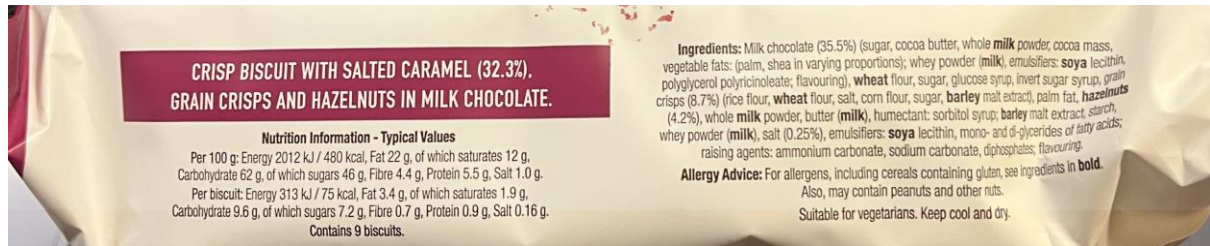
The Chocolate Factory, Deepdale Business Park,
Ashford Road, Bakewell, Derbyshire. DE45 1GT

T: +44 (0)1629 813 573 www.holdsworthchocolates.co.uk

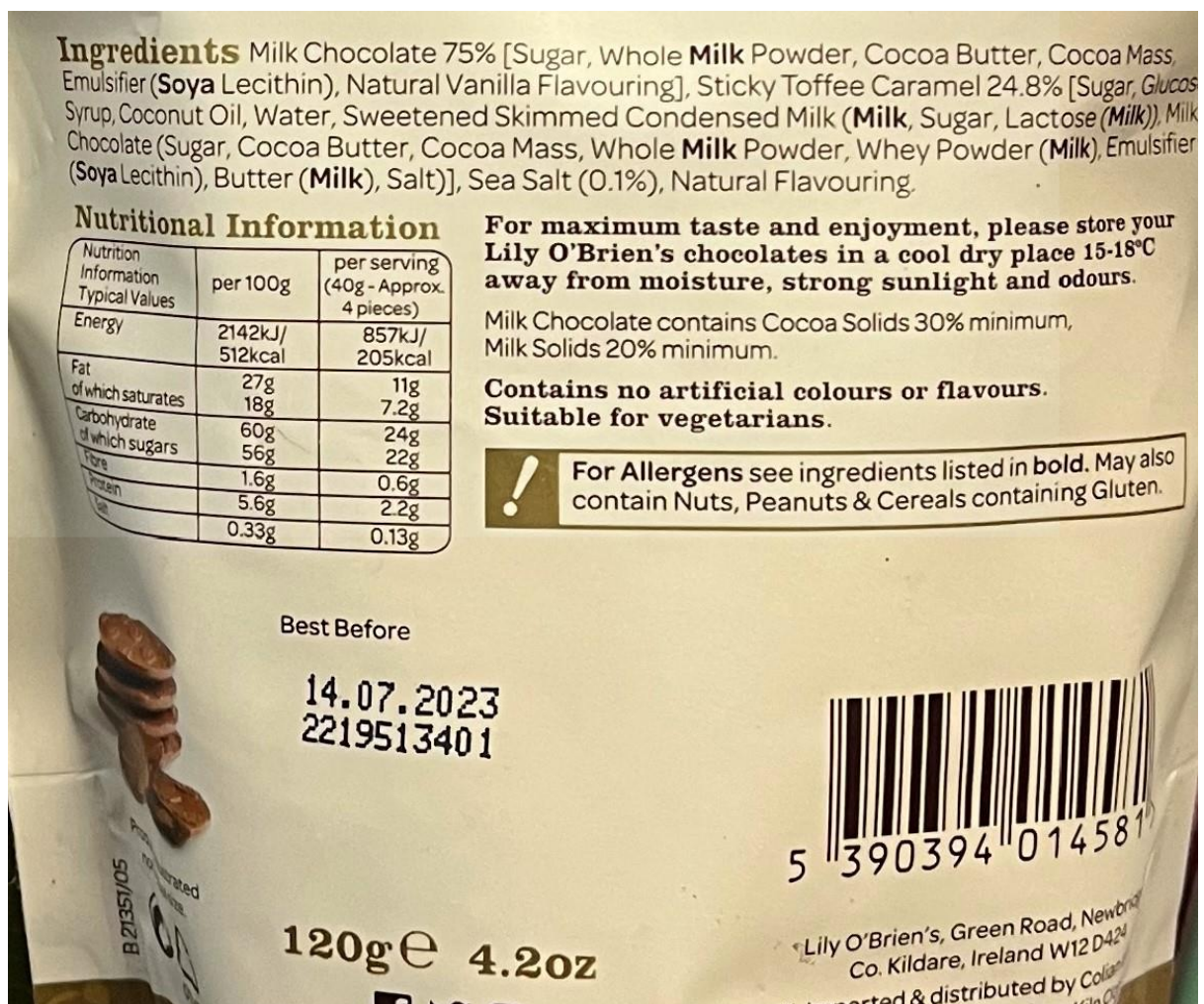
BEST BEFORE

10 JAN 2026

Elizabeth Shaw Salted Caramel Biscuits, 140g



Lily O'Brien's Creamy Caramel and Sea Salt Discs, 120g



CHAMPAGNE TRUFFLE SELECTION

PINK, MILK AND DARK MARC DE CHAMPAGNE TRUFFLES

Melt into a world of adventure with these sublime, hand crafted truffles, made from fine single estate cacaos in our Bean to Bar Chocolate factory in Devon. In this Luxurious Champagne Selection you have Dark Champagne Truffles dusted in our own cocoa powder, Milk Champagne Truffles lightly dusted in icing sugar and glorious Pink Champagne Truffles.

ONLY NATURAL INGREDIENTS

GB PINK, MILK AND DARK MARC DE CHAMPAGNE TRUFFLES. Raspberry Chocolate Truffles with Marc de Champagne. Cocoa solids: 36% minimum. Milk solids: 34% minimum. Ingredients: raw cane sugar, **MILK** powder, **ALMOND**, cocoa butter, cocoa mass, **ALMOND** oil, raspberry, Marc de Champagne 2.2%, rice flour. **Milk Chocolate Truffles with Marc De Champagne.** White chocolate cocoa solids: 36% minimum. Milk solids: 34% minimum. Ingredients: raw cane sugar, **MILK** powder, cocoa butter, **ALMOND**, cocoa mass, **ALMOND** oil, Marc de Champagne 2.2%, rice flour. **Dark Chocolate Truffles with Marc de Champagne.** Dark chocolate cocoa solids: 72% minimum. Ingredients: cocoa mass, raw cane sugar, **HAZELNUTS**, cocoa powder, **HAZELNUT** oil, Marc de Champagne 3%, cocoa butter. **ES ROSA, MILCH- UND DUNKLE TRÜFFEL MIT MARC DE CHAMPAGNE. Himbeer-Schokolade-Trüffel mit Marc de Champagne.** Kakaotrockenmasse: mindestens 36%. Milchtrockenmasse: mindestens 34%. Inhaltsstoffe: rohrrohrzucker, **MILCH**-pulver, **MANDELN**, kakaobutter, kakaomasse, **MANDEL-ÖL**, himbeeren, Marc de Champagne 2,2%, reismehl. **Milchschokolade-Trüffel mit Marc De Champagne.** Weiße schokolade-kakaotrockenmasse: mindestens 36%. Milchtrockenmasse: mindestens 34%. Inhaltsstoffe: rohrrohrzucker, **MILCH**-pulver, kakaobutter, **MANDELN**, kakaomasse, **MANDEL-ÖL**, Marc de Champagne 2,2%, reismehl. **Dunkle Schokolade-Trüffel mit Marc De Champagne.** Dunkle schokolade-kakaotrockenmasse: mindestens 72%. Inhaltsstoffe: kakaomasse, rohrrohrzucker, **HAZELNÜSSE**, kakaopulver, **HAZELNUSSE-ÖL**, Marc de Champagne 3%, kakaobutter. **ES TRUFAS DE CHOCOLATE ROSA, CON LECHE Y NEGRO CON MARC DE CHAMPÁN. Trufas de Chocolate con Frambuesa y Marc de Champán.** Cacao: 36% mínimo. Materias lácteas: 34% mínimo. Ingredientes: azúcar de caña en bruto, **LECHE** en polvo, **ALMENDRA**, manteca de cacao, pasta de cacao, aceite de **ALMENDRA**, frambuesa, marc de champán 2,2%, harina de arroz. **Trufas de Chocolate con Leche y Marc de Champán.** Chocolate blanco cacao: 36% mínimo. Materias lácteas: 34% mínimo. Ingredientes: azúcar de caña en bruto, **LECHE** en polvo, manteca de cacao, **ALMENDRA**, pasta de cacao, aceite de **ALMENDRA**, marc de champán 2,2%, harina de arroz. **Trufas de Chocolate Negro con Marc de Champán.** Chocolate negro cacao: 72% mínimo. Ingredientes: pasta de cacao, azúcar de caña en bruto, **AVELLANAS**, cacao en polvo, aceite de **AVELLANA**, marc de champán 3%, manteca de cacao.

Nutrition Information / Nährwertangaben / Información Nutricional /

Energy / Energie / Energía
Fat Total / Fett Insgesamt / Grasas Totales
Saturated Fat / Davon Gesättigte Fettsäuren /
Grasas Saturadas
Carbohydrate / Kohlenhydrate / Carbohidratos
Sugars / Davon Zucker / Azúcar
Protein / Eiweiss / Proteínas
Salt / Salz / Sal

Average Quantity Per 100g / Durchschnittliche / Cantidad Media /

2333kJ / 561Kcal
38.6g
16.5g
39.5g
35.0g
10.5g
0.1g



110g

Made in the UK by Willie's Cacao Ltd, Unit A Langland's Business Park, Uffculme, EX15 3DA, UK and Willie's Cacao Ltd, Osterbrogade 226 st. tv, 2100 Copenhagen, Denmark

www.williescacao.com
Best Before / Mindestens Haltbar
Bis / Mejor Antes

23/08/2025 L0011



5 060165 584031

Store in a cool dry place / Kühl und trocken lagern / Conservar en un lugar fresco y seco

RASPBERRIES & DARK CHOCOLATE *All-Butter Biscuits for Tea*

RASPBERRIES & DARK CHOCOLATE BISCUITS

Ingredients: Wheat flour (Wheat flour, Calcium, Iron, Niacin, Thiamin), Butter (28%) (Milk, Salt), Sugar, Cocoa Mass (3%), Cocoa Powder (1%), Natural flavouring, Caramel syrup, Emulsifier: Soja lecithin, Raspberry juice concentrate (0.3%), Sea Salt, Raising agent: Sodium bicarbonate. Not suitable for nut allergy sufferers. Best before end: See base.

BISCUITS AUX FRAMBOISES ET AU CHOCOLAT NOIR Ingrédients: Farine de blé (Farine de blé, Calcium, Fer, Niacine, Thiamine), Beurre (28%) (Lait, Sel), Sucre, Pâte de cacao (3%), Cacao en poudre (1%), Arôme naturel, sirop de caramel, Emulsifiant: Lécithine de soja, Jus de framboise concentré (0.3%), Sel de mer, Poudre à lever: Bicarbonate de sodium. Ne convient pas aux personnes souffrant d'allergies aux fruits à coques. À consommer de préférence avant fin: Voir la base.

GALLETAS DE FRAMBUESA Y CHOCOLATE NEGRO Ingredientes: Harina de trigo (Harina de trigo, Calcio, Hierro, Niacina, Tiamina), Mantequilla (28%) (Leche, Sal), Azúcar, Masa de cacao (3%), Cacao en polvo (1%), Aromas naturales, jarabe de caramelo, Emulgente: Lecitina de soja, Concentrado de zumo de frambuesa (0.3%), Sal marina, Gasificante: Bicarbonato de sodio. No apto para alérgicos a los frutos de cáscara. Consumir preferentemente antes del fin de: Ver base.

KEKSE MIT HIMBEEREN & DUNKLER SCHOKOLADE Zutaten: Weizenmehl (Weizenmehl, Calcium, Eisen, Niacin, Thiamin), Butter (28%) (Milch, Salz), Zucker, Kakaomasse (3%), Kakaopulver (1%), Natürliches Aroma, Karamellsirup, Emulgator: Sojalecithin, Himbeersaftkonzentrat (0.3%), Meersalz, Backtriebmittel: Natriumbikarbonat. Für Nussallergiker nicht geeignet. Mindestens haltbar bis Ende: Siehe Boden.

BISCOTTI AL CIOCCOLATO FONDENTE E

LAMPONI Ingredienti: Farina di grano (Farina di grano, Calcio, Ferro, Niacina, Tiamina), Burro (28%) (Latte, Sale), Zucchero, Pasta di cacao (3%), Cacao in polvere (1%), Aroma naturale, sciroppo di caramello, Emulsionante: Lecitina di soia, Succo di lampone concentrato (0.3%), Sale marino, Agente lievitante: Bicarbonato di sodio. Non adatto per chi soffre di allergia alla frutta a guscio. Da consumarsi preferibilmente entro fine: Vedere la base.

KIKS MED HINDBÆR & MØRK CHOKOLADE

Ingredienser: Hvedemel (Hvedemel, Calcium, Jern, Niacin, Thiamin), Smør (28%) (Mælk, Salt), Sukker, Kakaomasse (3%), Kakaopulver (1%), Naturlig aroma, karamellsirup, Emulgator: Sojalecithin, Koncentreret hindbærjuice (0.3%), Havsalt, Hævemiddel: Natriumbikarbonat. Ikke egnet til nødderallergikere. Bedst før: Se bunden.

HALLONKEX MED MÖRK CHOKLAD

Ingredienser: Vetemjöl (Vetemjöl, Calcium, Järn, Niacin, Tiamin), Smör (28%) (Mjöl, Salt), Socker, Kakaomassa (3%), Kakaopulver (1%), Naturlig Arom, karamellsirup, Emulgeringsmedel: Soja lecithin, Hallon juice koncentrat (0.3%), Havssalt, Bakpulver: Bikarbonat. inte lämplig för nötallergiker. Bäst före utgången av: Se botten.

KOEKJES MET FRAMBOZEN & PURE

CHOCOLADE Ingrediënten: Tarwemeel (Tarwemeel, Calcium, Uzer, Niacine, Thiamine), Boter (28%) (Melk, Zout), Suiker, Cacaomassa (3%), Cacaopoeder (1%), Natuurlijke aroma's, karamelstroop, Emulgator: Sojalecithine, Frambozensapconcentraat (0.3%), Zeezout, Rijsmiddel: Natriumbicarbonaat. Niet geschikt voor mensen met een notenallergie. Ten minste houdbaar tot einde: Zie onderkant.

NUTRITIONAL INFORMATION

TYPICAL VALUES

	per 100g
Energy / Énergie / Valor Energético / Energie / Energia / Energi / Energi / Energie	2173 kJ / 518 kcal
Fat / Matières grasses / Grasas / Fett / Grassi / Fedt / Fett / Vet	26.4 g
(of which) saturates / (dont) acides gras saturés / (de las cuales) ácidos grasos saturados / (davon) gesättigte Fettsäuren / (di cui) acidi grassi saturi / (heraf) mættede fedtsyrer / (Varav) Mättat fett / (waaronder) gesatureerd	16.4 g
Carbohydrate / Glucides / Hidratos de carbono / Kohlenhydrate / Carboidrati / Kulhydrater / Kolhydrater / Koolhydraten	67.0 g
(of which) sugars / (dont) sucres / (de los cuales) azúcares / (davon) Zucker / (di cui) zuccheri / (heraf) sukkerarter / (varav) sockerarter / (waaronder) suikers	19.3 g
Protein / Protéines / Proteínas / Eiweiß / Proteine / Protein / Protein / Protéine	6.2 g
Salt / Sel / Sal / Salz / Sale / Salt / Salt / Zout	0.6 g

140 g e (Net wt. 4.9 oz) MADE IN ENGLAND

PACKAGED IN A PROTECTIVE ATMOSPHERE / CONSUME WITHIN ONE WEEK OF OPENING

The E&E logo and Miller's are registered trademarks of Artisan Biscuits Ltd.

Artisan Biscuits, Britannia House, Blenheim Rd, Ashbourne, Derbyshire DE6 1HA
TFCC Distribution Limited, Inniscarra, Co. Dublin, D24 E029 www.artisanbiscuits.co.uk

MILLER'S®

BAKED BY HAND

PEAK DISTRICT ENGLAND

AMARETTINI CLASSICI

Premiata Dolciaria Gadeschi
• CREMONA ITALIA •

IT - **Amaretti** - Ingredienti: zucchero¹, mandorle di albicocca² (20%), albume d'uovo, proteine del latte, agenti lievitanti (E500, E503), aroma. Può contenere **arachidi, cereali (glutine), e frutta a guscio.**

¹origine: UE - non UE, ²origine: UE - non UE

GB - **Biscuits with apricot kernels** - Ingredients: sugar¹, apricot kernels² (20%), egg-white, milk proteins, raising agent (E500, E503), flavouring. May contain **peanuts, cereals (gluten), and nuts.**

¹origin: EU - non EU, ²origin: EU - non EU

D - **Gebäck mit Aprikosenkernen** - Zutaten: Zucker¹, Aprikoskerne² (20%), **Hühnerei-eiweiß, Milcheiweiß**, Backtriebmittel (E500, E503), Aroma. Kann **Erdnüssen, Getreide (Gluten), und Schalenfrüchten** enthalten.

¹Ursprung: UE - nicht UE, ²Ursprung: UE - nicht UE

FR - **Biscuits aux amandes d'abricot** - Ingrédients: sucre¹, amandes d'abricot² (20%), blanc d'œuf, protéines du lait, poudre à lever (E500, E503), arôme. Peut contenir **arachides, céréals (gluten), et fruits à coque.**

¹origine: UE - ne pas UE, ²origine: UE - ne pas UE

NL - **Koekjes met abrikozen-pitten** - Ingrediënten: suiker¹, abrikozenpitten² (20%), eiwit, melkeiwitten, rijsmiddel (E500, E503), aroma. Kan **aardnoten, granen (gluten), en noten** bevatten.

¹Oorsprong: UE - en niet UE, ²Oorsprong: UE - en niet UE

100g e
Net Wt. 3.53oz

Da consumarsi preferibilmente entro il: vedi sopra. / Best before: see top. / Mindestens haltbar bis: siehe oben. /

À consommer de préférence avant le: voir ci-dessus. / Ten minste houdbaar tot: zie hierboven.

Conservare in luogo fresco e asciutto. / Store in a cool dry place. / Kühl und trocken lagern. / Conserver dans un endroit frais et sec. / Op een droge en koele plaats bewaren.

Valori nutrizionali medi per 100g / Average nutritional values per 100g / Durchschnittliche Nährwerte je 100g / Valeurs nutritionnelles moyennes pour 100g / Gemiddelde voedingswaarde per 100g

Energia / Energy / Energie / Énergie / Energie	1828 kJ / 434 Kcal
Grassi / Fat / Fett / Matières grasses / Vetten di cui acidi grassi saturi / of which saturates / davon gesättigte Fettsäuren / dont acides gras saturés / waarvan verzadigde vetzuren	10 g 0,7 g
Carboidrati / Carbohydrate / Kohlenhydrate / Glucides / Koolhydraten di cui zuccheri / of which sugars / davon Zucker / dont sucres / waarvan suikers	78 g 76 g
Fibre / Fibre / Ballaststoffe / Fibres alimentaires / Voedingsvezels	3,1 g
Proteine / Protein / Eiweiß / Protéines / Eiwitten	6,5 g
Sale / Salt / Salz / Sel / Zout	0,15 g

PRODOTTO IN ITALIA / PRODUCED IN ITALY /
HERGESTELLT IN ITALIEN / PRODUIT EN ITALIE /
GEPRODUCEERD IN ITALIË.

Prodotto e confezionato da: / Produced and packed
by: / Hergestellt und verpackt von: / Fabriqué et
conditionné par: / Geproduceerd en verpakt door:



DOLCIARIA GADESCHI S.p.A.
Strada Provinciale 26, km 5
26010 Corte de' Frati - Cremona - Italy
www.gadeschi.it



ASTUCCIO	CARTA - PAP 21
SACCHETTO	PLASTICA - PP 05
RACCOLTA DIFFERENZIATA Verifica le disposizioni del tuo Comune per la gestione dei rifiuti.	



FARMHOUSE BISCUITS

• FINEST TRADITIONALLY MADE BISCUITS •

CRANBERRY BISCUITS

Biscuits with Sweetened Dried Cranberries

INGREDIENTS: Flour (**Wheat** Flour, Calcium, Niacin, Iron, Thiamin), Vegetable Oils (Sustainable Palm, Rapeseed), Sugar, Rolled **Oats**, Sweetened Dried Cranberries (4%) (Cranberries, Sugar, Sunflower Oil), Natural Flavouring, Raising Agents: Sodium Hydrogen Carbonate, Diphosphate; Free Range Pasteurised **Egg**.

ALLERGY ADVICE: For allergens, including cereals containing gluten, see ingredients in **bold**. May also contain Milk, Tree Nuts and Soya. Suitable for Vegetarians. Not suitable for Vegans.

STORAGE: Store in a cool, dry place. Once opened, keep in an airtight container and consume within 2 weeks.

Best Before: See Base.

Nutritional Information:

Typical Values	Per 100g
Energy	2244kJ / 537kcal
Fat	28.2g
of which Saturates	9.1g
Carbohydrate	64.3g
of which Sugars	25.2g
Protein	5.0g
Salt	1.04g



150g (5.3oz) e

Farmhouse Biscuits Ltd, Brook St,
Nelson, Lancs BB9 9PX
www.farmhousebiscuits.co.uk



BELGIAN MILK CHOCOLATE PEANUT CLUSTERS

INGREDIENTS:

50.0% **Peanuts**, 50.0% Milk chocolate (sugar, cocoa butter, whole **milk** powder, cocoa mass, **whey** powder, **lactose**, emulsifier: **soya** lecithin [E322], natural vanilla aroma).

NUTRITIONAL INFORMATION

	per 100gms
Energy	2362kj/567kcal
Fat	39.0g
Of which Saturates	12.0g
Carbohydrates	37.0g
Of which Sugars	32.0g
Fibre	4.4g
Protein	16.0g
Salt	0.20g

ALLERGY ADVICE:

For allergens, see ingredients in **Bold**.
May contain other nuts.

STORAGE CONDITIONS:

No Direct sunlight
Max temp: 16°C
Max Humidity: 65% R/H

BEST BEFORE:

See pack.



Joyfully produced
in The Netherlands.
Packed in Great Britain



PCH02

Joypots Ltd, EN9 1JH
www.joypots.com

100g e

SCOTTISH

SHORTBREAD NUTCRACKER'S NIBBLES

INGREDIENTS: **Wheat** flour (with calcium carbonate, iron, niacin, thiamin), Butter (33%) (**milk**, salt), Sugar, Cornflour.

Allergen Advice: For allergens, including cereals containing gluten, see ingredients in **bold**. May also contain nuts and sesame seeds.

INGRÉDIENTS: Farine **de blé** (avec du carbonate de calcium, fer, niacine, thiamine), Beurre (33%) (**lait**, sel), Sucre, Farine. Pour les allergènes, y compris les céréales contenant du gluten, voir ingrédients **en gras**. Peut également contenir des **noix** et des **graines de sésame**.

ZUTATEN: **Weizenmehl** (mit Calciumcarbonat, Eisen, Niacin, Thiamin), Butter (33%) (**Milch**, Salz), Zucker, Maismehl. Für Allergene, einschließlich glutenhaltige Getreide, siehe Zutaten in **Fettdruck**. Mai enthalten auch **Nüsse** und **Sesam**.

NUTRITIONAL INFORMATION (per 100g)

Energy:	2273 kJ / 544 kcal
Fat:	30.1g
as Saturates:	18.8g
Carbohydrates:	62.7g
as Sugars:	20.5g
Protein:	4.8g
Salt:	0.7g



5 060029 968243 >

Storage Instructions: Store in a cool, dry place. Once opened, keep in an airtight container.

Guarantee: If you are not satisfied with your purchase, please return the product and packaging stating where and when it was purchased.

150g e 5.3oz

IT'S A FAMILY THING

Three generations ago my grandfather, William Kindness opened his bakery and set his standards high, we've not compromised on that. For us the secret to great oatcakes is simple; always use the finest ingredients. Still handmade at our bakery in the Scottish countryside we are proud that our award winning oatcakes are now enjoyed around the world.

M Kindness.

Nutritional information

Typical Values	Per 100g	Per Oatcake Bite (5g)
Energy (kJ) (kcal)	1938 465	97 23
Fat of which is saturates	23.7g 5.1g	1.2g 0.3g
Carbohydrate of which is sugars	50.4g 3.6g	2.5g 0.2g
Fibre	5.4g	0.3g
Protein	12.7g	0.6g
Salt	2.1g	0.11g

Ingredients

Oatmeal (50%), Wheat Flour (Wheat flour, Wheat Gluten, Calcium Carbonate, Iron, Niacin, Thiamin). Cheddar Cheese (13%) (Milk), Rapeseed Oil, Sugar, Salt, Raising Agents (Monocalcium Phosphate, Potassium Hydrogen Carbonate, Calcium Carbonate).

Allergen Advice

For allergens, including cereals containing gluten, see ingredients in **bold**. Also may contain Egg and Soya.

Suitable for Vegetarians.

Storage: Store in a cool, dry place out of direct sunlight. Once opened, the product should be kept in an airtight container.

Best Before: See end of pack.

THE
KINDNESS
- BAKERY -

69 Main Street, New Deer, Turriff,
Aberdeenshire, AB53 6SY
Tel: 01771 644288 info@thekindnessbakery.co.uk

THEKINDNESSBAKERY.CO.UK



MONTY ENDEAVOURS TO ENSURE ALL FLAVOURS ARE INCLUDED, HOWEVER ON OCCASION THE SELECTION MAY VARY.

Best before end:

MAY 2023 2008
L422034-04880

Weight inclusive of immediate wrappings.

THESE TASTE ADVENTURES ARE
BEST PLACED IN A COOL DRY
PLACE AWAY FROM FLAMINGOES.

MONTY BOJANGLES COMPANY LTD.
LEGION HOUSE, 75 LOWER ROAD,
KENLEY, CR8 5NH.
TEL: 020 8668 5261



Nutrition facts Typical values	Per 100g
energy	2470 kJ 595 kcal
fat	45g
of which saturates	38g
carbohydrate	42g
of which sugars	40g
protein	4.2g
salt	0.13g



AN ASSORTMENT
OF COCOA DUSTED
TRUFFLES, INCLUDING THE
FOLLOWING VARIETIES:
CHOCOLATEY, BUTTERSCOTCH
CHIPS, HAZELNUT CHIPS AND
RASPBERRY & POPPING CANDY

INGREDIENTS: VEGETABLE OILS
(COCONUT, RSPO MB PALM KERNEL),
SUGAR, FAT REDUCED COCOA POWDER,
WHEY POWDER (FROM MILK), TOASTED
HAZELNUT CHIPS (1.5%), BUTTERSCOTCH
CHIPS (1.25%) (SUGAR, GLUCOSE SYRUP,
CREAM [MILK], SKIMMED MILK POWDER,
SALTED BUTTER (BUTTER [MILK], SALT),
SEA SALT), POPPING CANDY (1.25%) (SUGAR,
LACTOSE [MILK], COCOA BUTTER, GLUCOSE
SYRUP, CARBON DIOXIDE), COCOA POWDER
EMULSIFIER (SOYA LECITHIN), NATURAL
FLAVOURING, FLAVOURING.

ALLERGY ADVICE: FOR ALLERGENS,
SEE INGREDIENTS IN **BOLD**.
MAY CONTAIN TRACES OF **BARLEY, EGGS,**
OTHER **NUTS, SESAME** AND **WHEAT**.
SUITABLE FOR VEGETARIANS.

For the Giddily Curious,
email us at:
info@montybojangles.com
or visit our website:
montybojangles.com



9-2105-17-100-0



LINDT & SPRÜNGLI
MAÎTRE CHOCOLATIER SUISSE
DEPUIS 1845

**White chocolate truffles
with a smooth melting
filling**

Ingredients: sugar, cocoa
butter, vegetable fat
(coconut, palm kernel),
whole **milk** powder, **lactose**,
emulsifier (**soya** lecithin),
flavourings.

May contain **hazelnuts** and
other **nuts**.

Store in a cool and dry place.

Best before: (see back).

Have you tried
our other irresistible
LINDOR products?



NUTRITION INFORMATION PER 100g:

Energy / Energie	2624 kJ / 632 kcal
Fat / Fett	48 g
- Of which saturates / davon gesättigte Fettsäuren	35 g
Carbohydrate / Kohlenhydrate	45 g
- Of which sugars / davon Zucker	45 g
Protein / Eiweiß	4.1 g
Salt / Salz	0.20 g

Distributed by: Lindt & Sprüngli (UK) Ltd., United Kingdom:
4 New Square, Feltham, Middlesex, TW14 8HA.
Republic of Ireland: PO BOX 13038, Dublin 18
Vertrieb: Lindt & Sprüngli (Austria) Ges.m.b.H.,
Hietzinger Hauptstraße 1A, AT-1130 Wien

Love Popcorn Pecan Popcorn, 70g

ALLERGENS: For allergens, please see ingredients in bold.

WARNING: Unpopped kernels may be present in this product. Made in an environment where peanuts and wheat are handled.

DIETARY ADVICE: Suitable for Vegetarians.

GMO STATUS: To the best of our knowledge, no genetically-modified raw materials are present in this product.

INGREDIENTS: Granulated Sugar, Air Popped Corn (28%), Golden Syrup, Butter (Contains **Milk**), Pecan Halves (7%) (**Nuts**), Maple Syrup, Glucose Syrup, Rapeseed Oil, Salt, Bicarbonate of Soda, Nut Flavouring (0.3%), Emulsifier: **Soya** Lecithin.

NUTRITIONAL INFORMATION

Typical values	PER 100g
Energy	1864kJ 441kcal
Fat	14.0g
of which saturates	4.8g
Carbohydrates	76.2g
of which sugars	51.3g
Fibre	4.5g
Protein	4.5g
Salt	1.2g
Sodium	0.5g

**100% PROPER
INGREDIENTS**
— for a true flavour —



GLUTEN
FREE



GM
FREE



MADE
IN THE UK



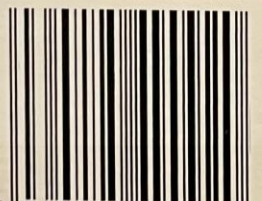
SUITABLE FOR
VEGETARIANS

BEST BEFORE END: See base of pack.

STORAGE: Store in a cool, dry place away from direct sunlight.

70g (2.4oz) e

If you are not entirely satisfied with this product please return it to the store where it was purchased and we will be pleased to replace or refund it. This does not affect your statutory rights.



5 060225 490920 >



Love the planet, please
recycle this product




TO SEND US SOME LOVE

WRITE TO: Love Popcorn,
35b Number One Ind. Est.
Consett, County Durham
DH8 6SZ

VISIT: www.lovepopcorn.co.uk

WE ARE SOCIAL:





White Truffle Potato Crisps with Lobster Flavouring

100g e

Potato Crisps with a sprinkling of white Truffle and Lobster flavour seasoning

Ingredients:

Potatoes, Rapeseed Oil, Rice Flour, Salt, Potato Maltodextrin, Natural Flavouring, Flavouring, Black Pepper, White truffle powder* (0.10%)

*Origin – Non UK

NUTRITION

Typical values Per 100g

Energy	2149 kJ/515 kcal
Fat	30g
of which saturates	5.5g
Carbohydrate	53g
of which sugars	0.4g
Protein	4.3g
Salt	0.69g

Annas Almond thins

CA 33 BISCUITS/PLÄTZCHEN/GALLETAS/BOLACHAS/BISCOTTI

150 G

UK Biscuits with almond flavour
INGREDIENTS: Wheat flour, sugar, vegetable oils (palm*, rapeseed, coconut), sugar syrup, raising agent (sodium hydrogen carbonate), cinnamon, natural flavour, salt. May contain traces of Almond. *Palm oil from sustainable and certified plantations.

FR Biscuits au goût d'amande
INGRÉDIENTS: farine de blé, sucre, huiles végétales (palme*, colza, noix de coco), sirop de sucre, poudre à lever (carbonate acide de sodium), cannelle, arôme naturel, sel. Peut contenir des traces d'amandes. *Huile de palme issue de plantations durables et certifiées.

DE Gebäck mit Mandelgeschmack
ZUTATEN: Weizenmehl, Zucker, pflanzliche Öle (Palm*, Raps, Kokosnuss), Zuckersirup, Backtriebmittel (Natriumhydrogencarbonat), Zimt, natürliches Aroma, Salz. Kann Spuren von Mandeln enthalten. *Zertifiziertes Palmöl aus nachhaltigem Anbau.

ES Galletas con sabor a almendra
INGREDIENTES: Harina de trigo, azúcar, aceite vegetal (palma*, nabina, coco), jarabe de azúcar, gasificante (bicarbonato sódico), canela, aroma natural, sal. Puede contener trazas de almendras. *Aceite de palma proveniente de plantaciones sostenibles y certificadas.

PT Biscoitos com sabor a amêndoa
INGREDIENTES: Farinha de trigo, açúcar, óleos vegetais (palma*, colza, coco), xarope de açúcar, levedante (hidrogenocarbonato de sódio), canela, aroma natural, sal. Pode conter vestígios de amêndoa. *Óleo de palma de plantações sustentáveis e certificadas.

IT Biscotto al gusto di mandorla
INGREDIENTI: Farina di frumento, zucchero, olio vegetale (palma*, colza, cocco), sciroppo di zucchero, agente lievitante (bicarbonato di sodio), cannella, aroma naturale, sale. Può contenere tracce di mandorle. * Olio di palma da piantagioni sostenibili e certificate.

	100 g	6 Annas (27 g)	%**/
Energy/Energie/Energie/Valor energético/Energia	1976 kJ/471 kcal	534 kJ/127 kcal	6%
Fat/Matières grasses/Fett/Grasas/Lípidos/Grassi	19g	5.1g	7%
of which/dont/davon/de las cuales/dos quais/di cui: Saturates/Acides gras saturés/Gesättigte Fettsäuren/Acidos grasos saturados/ Saturados/Acidi grassi saturi	9.0g	2.4g	12%
Carbohydrate/Glucides/Kohlenhydrate/Hidratos de carbono/Carboidrati	69g	19g	7%
of which/dont/davon/de las cuales/dos quais/di cui: Sugars/Sucres/Zucker/Açúcares/Açúcares/Zuccheri	33g	8.9g	10%
Fibre/Fibres alimentaires/Ballaststoffe/Fibra alimentaria/Fibra	1.9g	0.5g	-
Protein/Protéines/Eiweiß/Proteínas/Proteine	5.4g	1.5g	3%
Salt/Sel/Salz/Sale	1.21g	0.33g	6%

**Reference intake of an average adult (8 400 kJ/2 000 kcal)/Apport de référence pour un adulte-type (8 400 kJ/2 000 kcal)/Referenzmenge für einen durchschnittlichen Erwachsenen (8 400 kJ/2 000 kcal)/Ingesta de referência de um adulto médio (8 400 kJ/2 000 kcal)/Dose de referência para um adulto médio (8 400 kJ/2 000 kcal)/Assunzioni di riferimento di un adulto medio (8 400 kJ/2 000 kcal). 1 packaging/paquet/Packung/paquete/pacote/pacchetto = 5.5 portions/Portionen/porciones/porções/porzioni of/de/von/de/da 27g.

Forest Feast Salted Caramel Milk Chocolate Almonds

Ingredients

Belgian Milk Chocolate (59%) (Sugar, Cocoa Butter, Whole Milk Powder, Cocoa Mass, Emulsifier (Soya Lecithin), Natural Vanilla Flavouring), Salted Caramel Almonds (40%) (Almonds, Sugar, Salt, Golden Syrup, Sunflower Oil, Vanilla Seasoning (Dextrose, Sugar, Natural Flavouring), Maltodextrin, Glucose Syrup, Sugar, Vegetable Oils (Coconut, Palm, Sunflower), Glazing Agents (Gum Arabic, Shellac), Milk Chocolate contains 34% Cocoa Solids minimum, 22% Milk Solids minimum

Typical values	Per 100g
Energy	2377kJ
	568kcal
Fat	37.7g
of which saturates	14.1g
Carbohydrate	43.4g
of which sugars	36.9g
Fibre	5.5g
Protein	10.8g
Salt	0.73g

Allergen Information

Contains Almonds, May Contain Brazil Nuts, May Contain Cashew Nuts, May Contain Hazelnuts, May Contain Macadamia Nut / Queensland Nut, Contains Milk, May Contain Nuts, May Contain Peanuts, May Contain Pecan Nuts, May Contain Pistachio Nuts, May Contain Sesame, Contains Soya, May Contain Walnuts

Our chocolaterie also handles Peanuts, Other Nuts & Sesame Seeds.

Joe & Seph's Eggnog Popcorn, 80g

THIS SANTA'S GROTTO IS LOCATED IN GREAT BRITAIN



Tear here and enjoy the aroma!

THE UNIQUE TASTE EXPERIENCE OF OUR AIR-POPPED CORN

Start with...

**FRESH DOUBLE
CREAM**



Followed by...

**FESTIVE
JAMAICAN RUM**



And to finish...

**WARMING
NUTMEG**

*If you don't love this popcorn...
...I'll eat my hats!*

Popcorn with Caramel, Double
Cream, Rum & Nutmeg

Ingredients

Custard (Whole **Milk**, Whipping Cream (**Milk**)
(30%), Sugar, Pasteurised Free Range **Egg** Yolk,
Tapioca Starch, Madagascan Vanilla Extract,
Vanilla Seeds), Corn, Sugar, Butter (**Milk**), Corn
Syrup, Double Cream (**Milk**) (4%), Rum (4%),
Cinnamon, Vanilla Powder, Nutmeg, Sea Salt.

Allergy information

For allergens see ingredients in **bold italic**.
Made in an environment where nuts,
peanuts and sesame seeds are present.

Storage instructions

Store in a cool, dry, dark place. Once open
consume within 5 days.

Nutritional information

Typical values per	100g	Serving
Energy	1637kJ	327kJ
	392kcal	78kcal
Fat	22g	4.5g
of which saturates	14g	2.7g
Carbohydrate	46g	9.3g
of which sugars	32g	6.4g
Fibre	2.1g	<0.5g
Protein	2.8g	0.6g
Salt	0.45g	0.09g

Serving size = 20g

Careful!

May contain unpopped kernels.

♦ No artificial flavours,
colours or preservatives

♦ Gluten free

♦ Suitable for vegetarians

Discover our full collection
at joeandsephs.co.uk

Find **joeandseph** on:



Produced in the UK at Joe & Seph's Kitchens
Joe's Gourmet Foods Ltd, 3 Willen Field Road,
London, NW10 7BQ, UK
Joe's Gourmet Foods Ltd, 71 Lower Baggot Street,
Dublin, D02 P593, IE

80ge
(four servings per pack)

Best before

See bag below



1151POUCH



Grandma Wild's

Butter Shortbread Biscuits

Ingredients: **Wheat** Flour (**Wheat** flour, Calcium Carbonate, Iron, Niacin, Thiamin), Salted Sweetcream Butter (33%) (Cream: **Milk**; Salt), Sugar, Salt.

For allergens, including cereals containing gluten, see ingredients in **bold**. Not suitable for nut & sesame allergy sufferers: may also contain traces of egg, mustard, peanut, soya and other gluten sources (oat, spelt, rye, barley).

Suitable for vegetarians.

Storage Conditions: Store in a cool dry place avoiding direct sunlight. Once opened, keep in an air tight container and consume within 30 days.

For Best Before: See base

Nutritional Information

Typical Values Per	Per 100g
Energy (kJ/kcal):	2173/519
Fat (g):	27
Of which saturates	18
Carbohydrate (g):	63
Of which sugars	30
Protein (g)	4.9
Salt (g)	1.13



Holdsworth Millionaire's Shortbread Truffle Ballotin 110g

MILK Chocolate (Sugar, Cocoa Butter, Whole MILK Powder, Cocoa Mass, Emulsifier: SOYA Lecithin, Natural Vanilla), Dark Chocolate (Cocoa Mass, Sugar, Cocoa Butter, Emulsifier: SOYA Lecithin, Natural Vanilla), Caramel (Glucose Syrup, Sweetened Condensed Skimmed MILK, Sugar, Water, Cocoa Butter, Modified Starch, Thickener: Agar-Agar, Flavours, Emulsifiers: Mono and Diglycerides of Fatty Acids and Sunflower Lecithin, Salt, Acidity Regulator: Citric Acid (E330), Preservative: Potassium Sorbate), Biscuit Crump 13% (WHEAT Flour (Statutory Additives: Calcium Carbonate, Iron, Thiamin, Nicotinamide), Sugar, Sustainably Sourced Palm Oil, Invert Sugar Syrup, Rapeseed Oil, Raising Agent (E500ii Sodium Bicarbonate), Salt)), Butter (MILK), Salt Flakes, Neutral Spirit, Colour (Iron Oxide). For allergens, see ingredients in BOLD. Contains MILK, SOYA & WHEAT. May contain traces of TREE NUTS, PEANUTS & EGG.

THE DECADENT
DESSERT COLLECTION

Holdsworth

MILLIONAIRE'S
SHORTBREAD TRUFFLE



	Per 100 g	Per chocolate [AV. 12 g]
Energy	2096 kJ / 501 kcal	251 kJ / 60 kcal
Fat	30 g	4 g
of which saturates	17 g	2 g
Carbohydrate	55 g	7 g
of which sugars	45 g	5 g
Protein	5 g	0.6 g
Salt	1.6 g	0.19 g

Dark Chocolate: Cocoa Solids 60% min.
Milk Chocolate: Cocoa Solids 33% min. Milk Solids 22%min.

Ingredients: Milk Chocolate (Sugar, Cocoa Butter, Whole **Milk** Powder, Cocoa Mass, Emulsifier: **SOYA** Lecithin, Natural Vanilla), Dark Chocolate (Cocoa Mass, Sugar, Cocoa Butter, Emulsifier: **SOYA** Lecithin, Natural Vanilla), Caramel (Glucose Syrup, Sweetened Condensed Skimmed **Milk**, Sugar, Water, Cocoa Butter, Modified Starch, Thickener: Agar-Agar, Flavours, Emulsifiers: Mono and Diglycerides of Fatty Acids and Sunflower Lecithin, Salt, Acidity Regulator: Citric Acid, Preservative: Potassium Sorbate), Biscuit Crumb 13% (**Wheat** Flour (Statutory Additives: Calcium Carbonate, Iron, Thiamin, Nicotinamide), Sugar, Palm Oil, Invert Sugar Syrup, Rapeseed Oil, Raising Agent (E500ii Sodium Bicarbonate), Salt), Butter (**Milk**), Salt Flakes, Neutral Spirit, Colour (Iron Oxide).

For **allergens**, see ingredients in **bold**. Contains **wheat**. May contain traces of **peanuts** other **tree nuts**, **gluten** & **egg**. Suitable for vegetarians. Palm oil from sustainable sources.

Store in cool, dry conditions 12-18°C away from strong odours and direct sunlight.

Lanson White Label

Wine Type: Champán

Winecellar: Lanson

Regions: [A.O.C. Champagne](#)

Grape Variety: 38% [Chardonnay](#), 25% [Pinot Meunier](#), 37% [Pinot Noir](#)

Bottle type: Champanoise

Bottle size (cl): 75

Service: Serve at an ambient temperature of 8 °C

Sugar (g/l): 28

Graduation (% vol.): 12.50



Sensi Frozen 18K Gold Brut Prosecco 75cl

Brand	Sensi
Country Of Origin	Italy
Presentation	Bottle Only
Strength (ABV)%	11
Case / Pack Size	1
Container Size	750ml
Bottle Closure	Synthetic Cork
Wine Style	Sparkling
Wine Colour	White

Grape Type	<u>GLERA</u>
Vintage	<u>NV</u>



DeNatile

NERO D'AVOLA SICILIA



DENOMINAZIONE DI ORIGINE CONTROLLATA
2023

Vino rosso di intensità e fascino, con note speziate e di pepe nero. Dal gusto persistente, ricco ed elegante, è perfetto abbinato al sapore deciso di carne rossa, arrosti, selvaggina e formaggi stagionati.

A complex and charming red, with notes of black pepper and spices. Elegant and well balanced, it is perfect with the strong flavours of red meat, such as roasts and game, and mature cheeses.

INGREDIENTS,
INFO & RECYCLE



100 ml: E = 344 kJ/ 82 kcal

Imbottigliato da C.F.M. e C. S.p.A. - Verolanuova - Italia
per conto di The Wine People S.r.l. - Trento - Italia



75cl e | 14% vol

PRODOTTO IN ITALIA - PRODUCT OF ITALY

North South Wines, OX27 8AL, UK

CONTIENE SOLFITI - ENTHÄLT SULFITE - POKRAJNJI SOLFITI - INDEHOLDER SULFITTER
SISÄÄLLÄ SULFITTEJA - CONTIENT SULFITES - CONTAINS SULPHITES
SODATYJE YRA SULFITAI - FIH SULFITI - BEVAT SULFIETEN - ZAWIERA
SULFITY - CONTEM SULFITOS - OBSAHUJE SIRIČITANY - OBSAHUJE ÓÍÉICITANY

L-CEE23 13:56





DeNatile

PINOT GRIGIO

TERRE SICILIANE

INDICAZIONE GEOGRAFICA TIPICA

2023

Vino bianco dal profumo intenso di frutti tropicali e agrumi. Perfettamente equilibrato, morbido e rinfrescante. È un vino versatile, perfetto come aperitivo o abbinato a una gran varietà di piatti.

An intense white with a lovely bouquet of tropical and citrus fruits. Perfectly balanced, supple and refreshing. A versatile wine, it pairs well with a great variety of dishes or can be enjoyed as an aperitif.

INGREDIENTS,
INFO & RECYCLE



100 ml E = 315 kJ/ 75 kcal

Imbottigliato da C.F.M. e C. S.p.A. - Verolanuova - Italia
The Wine People S.r.l. - Trento - Italia



75cl e

13% vol

PRODOTTO IN ITALIA - PRODUCT OF ITALY

North South Wines, OX27 8AL, UK

CONTIENE SOLFITO - ENTHÄLT SULFITE - POKRAJNJI SOLFITI - INDEHOLDER SULFITER
KÄÄNÄ SULFITO - SISÄLTÄÄ SULFIITTEJA - CONTIENT SULFITES - CONTAINS SULPHITES
SULFITO - SODAYJE YRA SULFITAI - FIH SULFITI - BEVAT SULFIETEN - ZAWIERA
SULFITO - CONTIEN SULFITOS - OBSAHUJE SIRIČITANY - OBSAHUJE OIEICITANY
KÄÄNÄ SULFITO - CONTIENE SULFITOS - INNEHÄLLER SULFITER - TARTALMAZ SZULFITOK

L-CEE18
12:13



8 034115 197524

Roku Japanese Gin

Alcohol Type

Liqueur

Country

Japan

Net Contents

70cl

Alcohol Percentage and Units

Alcohol Unit Text

28x25ml per bottle 25ml per glass 100ml = 1,008kJ / 240kcal 25ml = 255kJ / 60kcal The UK Chief Medical Officers recommend adults do not regularly drink more than 14 units per week
www.bedrinkaware.co.uk www.drinksmart.com

ABV

43% vol

Whitly Neil Vodka

Brand	J.J. Whitley
Alcohol type	Vodka
Flavour	Smooth vanilla with subtle spice
Unit count	700.0 millilitre
Number of items	1

About this item

70cl 38% ABV

CRÈME DE CASSIS DE DIJON

GABRIEL BOUDIER®
DIJON



THE VIBRANT AROMAS OF OUR CREME DE
CASSIS DE DIJON ARE THE REFLECTION
OF 150 YEARS OF EXPERIENCE AND HIGH
LIQUEUR STANDARDS OF MAISON
FAMILIALE GABRIEL BOUDIER.

CONSERVER AU RÉFÉRICATEUR
STORE IN THE REFRIGERATOR.



IMPORTED BY EMPORIA BRANDS LTD,
172 LONDON ROAD, GUILDFORD, GU1 1XR, UK

20% VOL. | e 50CL | LIQUEUR



PRODUCED BY GABRIEL BOUDIER
14 RUE DE CLUJ
21 000 DIJON - FRANCE

HC3090-1

Bottega Tiramisu Liqueur 50cl

A pleasantly sweet and creamy liqueur inspired by the traditional Italian dessert. Best served chilled, it is perfect on its own, added to cocktails or even with panettone or ice cream.

50cl bottle

ABV 17%