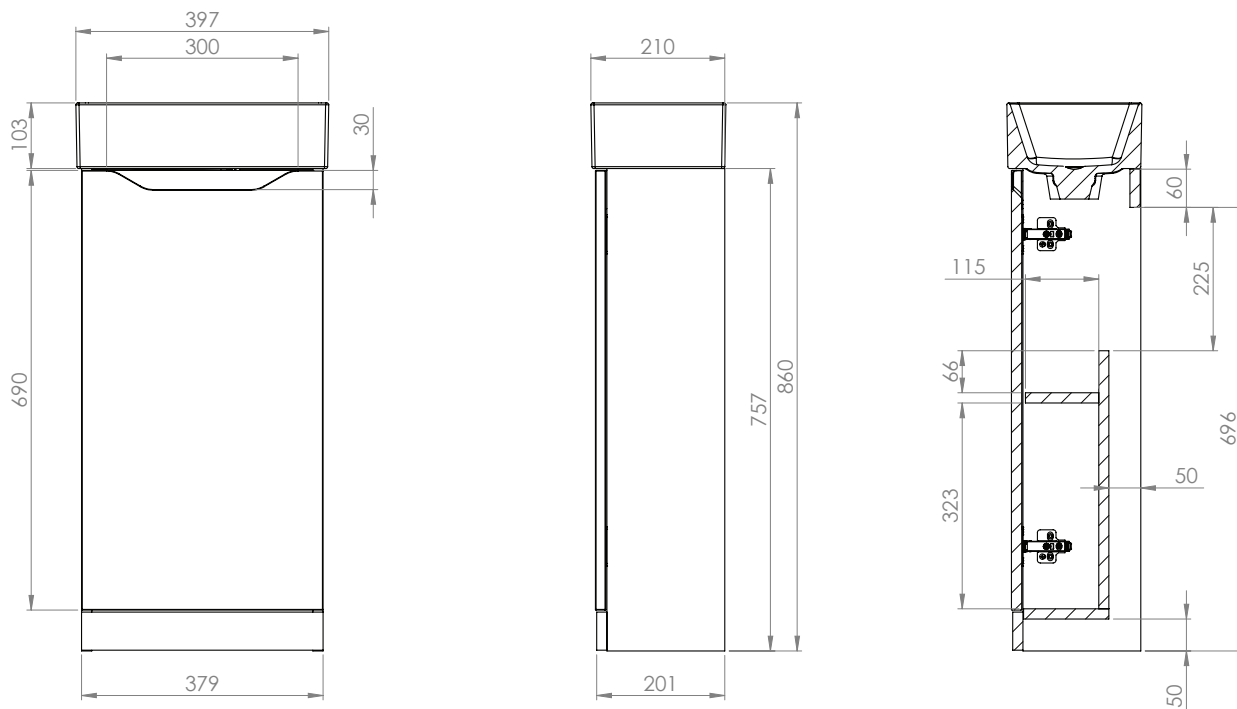


# Technical Data Sheet

## 400mm Cloakroom Unit

What's in the box: 1x 545175 or 545176 Unit, Basin + Colour Matched Backplate Handle



Diagrams not to scale  
All dimensions in mm  
Tolerance of +/-5mm

### Materials

Carcass: 16mm painted MDF  
Fascia Components: 18mm painted MDF

\*\*Dimensions are subject to change, customers are advised to measure actual product before commencing installation.  
\*\*\*Fixing point dimensions are for guidance only/the positions of wall fixing must be checked when product is received.

### FAQs

|   |   |
|---|---|
| Q: How big is the plumbing void?            | A: 50mm.  |
| Q: Are the hinges soft close?               | A: Yes, the hinges are soft close.  |
| Q: How deep is the unit with door open?     | A: Approx 566mm at 90°.   |
| Q: Can the doors be adjusted?               | A: The door can be adjusted as detailed in the supplied instructions          |
| Q: Is the shelf removable?                  | A: No, the shelf can't be removed.  |
| Q: What is the shelf capacity?              | A: Shelf maximum depth: 115mm.  |
| Q: How many shelves are there?              | A: There is one shelf and a base within the unit.                             |
| Q: Is the shelf adjustable?                 | A: No, the shelf is in a fixed position.                                      |
| Q: What is the interior finish of the unit? | A: Dark Grey in all finishes apart from Matt White which has White internals. |

NOTE: No RAL Code available