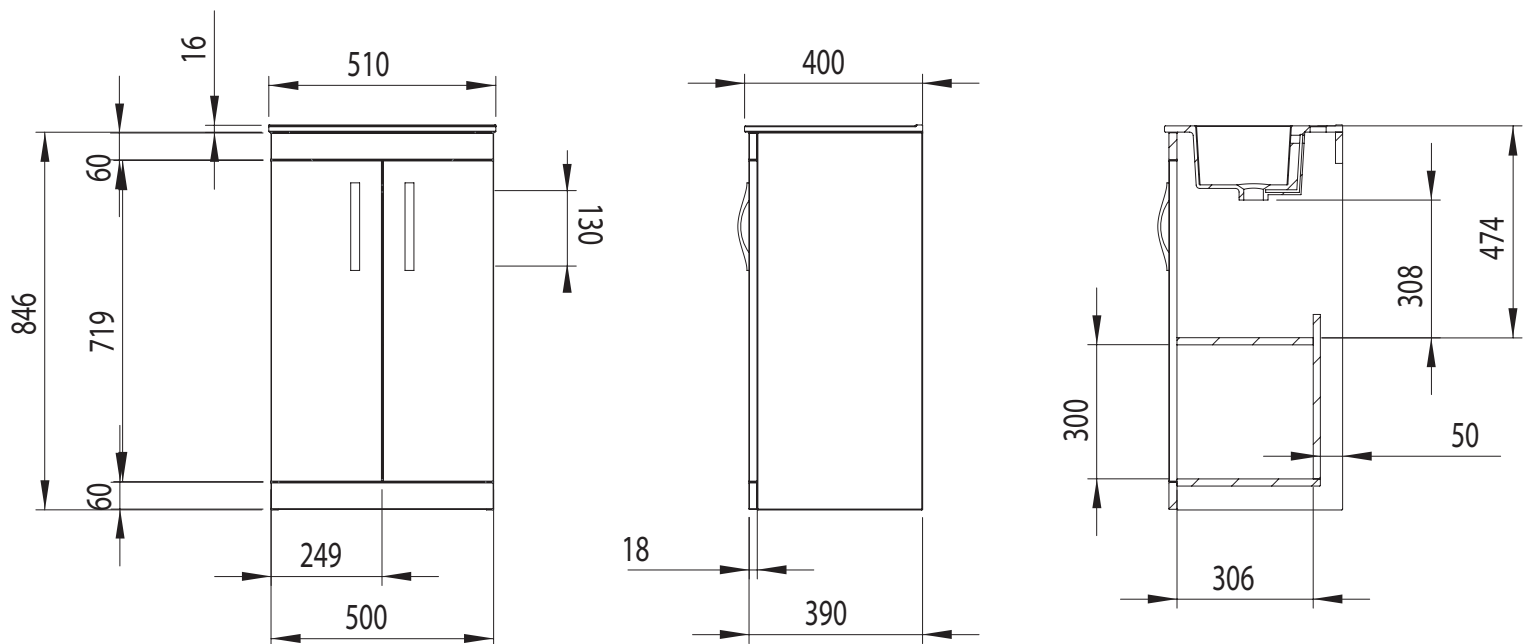


Technical Data Sheet

500mm Basin Unit

What's in the box: 1x 545172 Unit, Basin + Handles



Diagrams not to scale
All dimensions in mm
tolerance of +/-5mm

Materials

Carcass: 16mm Painted MFC or 18mm MFC for wood finish.

Fascia Components: 16mm Painted MFC or 18mm MFC for wood finish.

**Dimensions are subject to change, customers are advised to measure actual product before commencing installation.

***Fixing point dimensions are for guidance only/the positions of wall fixing must be checked when product is received.

FAQs

Q: How big is the plumbing void at the back of the furniture?

A: 50mm

Q: Are the handles fitted?

A: No, they are fixed to back of door and need re-fixing to front.

Q: How deep/wide is the unit with doors open?

A: Approx depth with 90 degree hinge 700mm. Width at 180 degrees 1300mm

Q: Is the shelf removable?

A: No, the shelf is fixed

Q: What is the shelf capacity?

A: Shelf max depth: 306mm

Q: How many shelves are there?

A: There are two shelves within the unit.

Q: Are the shelves adjustable? What Height?

A: No, you can't reposition the shelves.

Q: What is the interior finish of the unit?

A: White melamine.

NOTE: No RAL Code available