



ITM. / ART. 531543
Model: SZCKTG22

57cm Charcoal Kettle Grill with Cover

Manual for Installation, Care and Maintenance

IMPORTANT, RETAIN FOR FUTURE REFERENCE: READ CAREFULLY



***For Outdoor Household Use Only**
***Not Suitable For Commercial Applications**

Questions, problems, and/or missing parts? Before returning to your retailer, please send an email to our customer service department: nxrcs@duro-global.com



If you prefer to speak to a live agent; call 1-888-909-8818 Monday-Friday 9:00 AM – 5:00 PM PST;
Languages Spoken: English, French, and Spanish (Toll Free # for US and CA Regions Only)



SAFETY PRECAUTIONS

⚠ **WARNING:** This barbecue reaches extremely high temperatures during use. Do not move the barbecue while it is hot. Do not use indoors

⚠ **WARNING:** Do not use flammable liquids such as alcohol, gasoline, or lighter fluid to start or relight the grill. These substances can cause serious injury or fire. Keep children and pets away from the grill at all times.

⚠ **WARNING:**

- **Charcoal Limit:** Do not burn more than 3.6 kg (8 lbs) of charcoal at once.
- **Fire Safety:** Keep a fire extinguisher nearby.
- **Outdoor Use Only:** Use only outdoors in well-ventilated areas.
- **Impaired Use:** Avoid use under the influence of alcohol or drugs.
- **Lifting Safety:** Lift with caution, preferably with two people.
- **Hot Surface Warning:** Do not move the unit while in use.
- **Clearance Requirements:** Maintain a 91cm (36-in) clearance from combustible materials.
- **Overhead Hazards:** Avoid operating under overhangs or combustible materials.

⚠ **WARNING:**

- **Intended Use:** This product is for outdoor grilling only. Do not use as a heater.
- **Surface Safety:** Operate the unit on a stable, level, non-flammable surface such as asphalt, concrete, or solid ground.
- **Flammable Surface Warning:** Never operate the grill on flammable materials, including carpets and wooden decks.
- **Assembly and Operation Caution:** Exercise caution during assembly and operation to avoid cuts and scrapes.
- **Intended Use Only:** DO NOT use this product in a manner other than its intended purpose.
- **Commercial Use Restriction:** It is NOT intended for commercial use.
- **Recreational Vehicle and Boat Restriction:** Do not install or use this grill on recreational vehicles or boats.
- **Flammable Liquid Storage:** Keep this unit away from gasoline, other flammable liquids, and areas where combustible vapors may be present.
- **Child and Pet Safety:** Keep the grill and its components out of reach of children and pets.
- **Storage:** Store this unit in a dry, protected location.
- **Attended Use:** Never leave the grill unattended while in use or while ashes are hot.
- **Ash Disposal:** DO NOT leave hot ashes unattended until the grill cools completely.
- **Moving the Unit:** DO NOT move the unit while in use or while ashes are still hot. Allow the unit to cool completely before moving or storing.

SAFETY PRECAUTIONS (Continued)

⚠ WARNING:

- **Fueling:** NEVER use gasoline or other highly volatile fluids as a starter.
- **Cooking:** Always wait for any charcoal flames to subside before placing food on the cooking grid.
- **Ash Disposal:** Dispose of cold ashes by wrapping them in a heavy-duty aluminum foil and placing them in a noncombustible container. Make sure that there are no other combustible materials in or near the container.
- **Cleaning and Maintenance:** Allow the unit to cool completely before conducting any routine cleaning or maintenance.
- The appliance has to be installed on a secure level base prior to use;
- The barbecue shall be heated up and the fuel kept red hot for at least 30 min prior to the first cooking.
- "WARNING! This barbecue will become very hot, do not move it during operation"
- "Do not use indoors!"
- "WARNING! Do not use spirit or petrol for lighting or re-lighting! Use only firelighters complying to EN 1860-3!"
- "WARNING! Keep children and pets away"

Do not use the barbecue in a confined and/or habitable space e.g. houses, tents, caravans, motor homes, boats. Danger of carbon monoxide poisoning fatality.



Do not cook before the fuel has a coating of ash.

- The gloves should be used to avoid burns, because the handle of barbecue will be very hot during use."
- Use the grate handle to remove the coking grate, and the grate handle cannot put on the cooking grate all the time during use



Carefully Read All Instructions Completely Before Starting Assembly

Work Area:

- Choose a clean, flat surface for assembly to avoid scratching or damaging the grill components.

Required Tools:

- Gather the necessary tools for assembly:
 - 8-inch Phillips head screwdriver (Not included)
 - Pliers or adjustable wrench (optional) (Not included)

Note:






- Certain assembly steps may have already been completed at the factory.

⚠ DANGER: Failure to follow these instructions can lead to fire or explosion, causing severe burns, property damage, and potential loss of life.

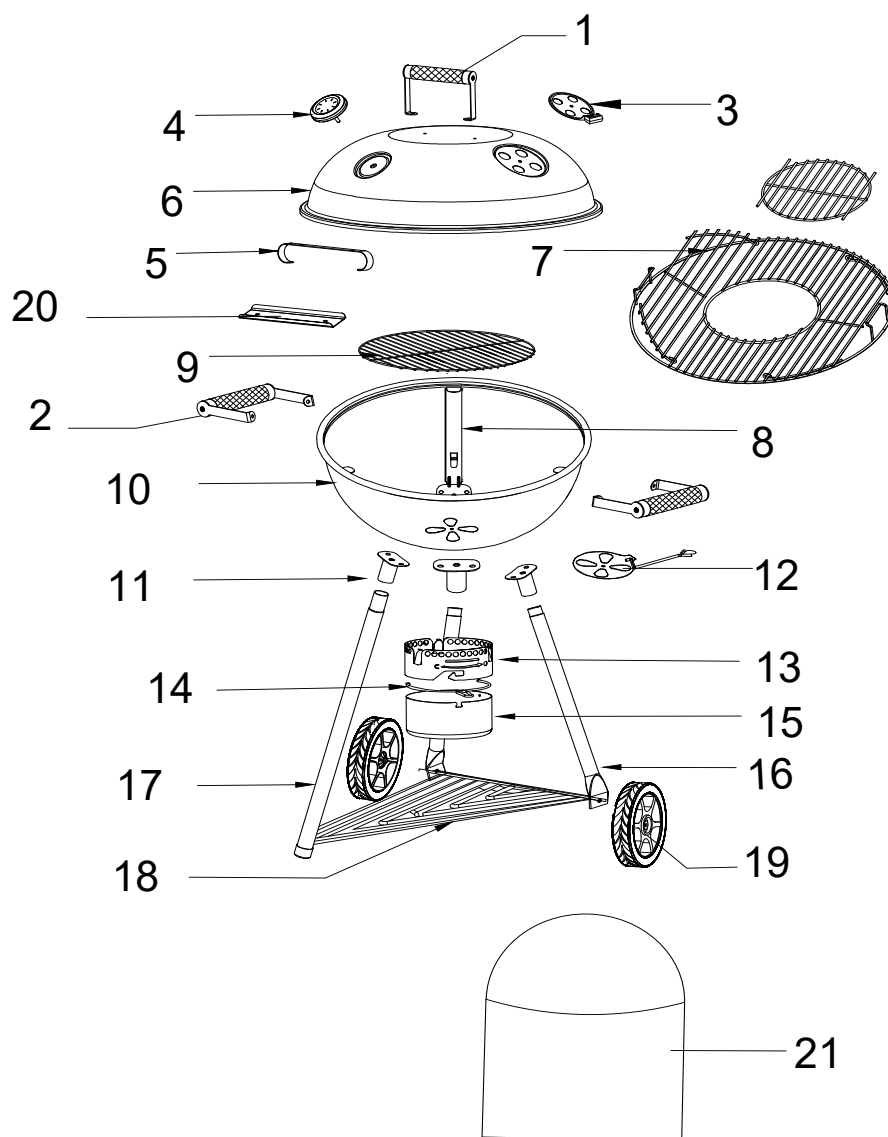
⚠ DANGER: The grill and its components become extremely hot during and after use. Avoid leaning over the cooking area and touching any part of the grill until it has completely cooled down.



Hardware List

A	  (M6*12)	14sets	C	  (M8)	2sets
B	 (M6*40) (In the leg tube)	3sets			

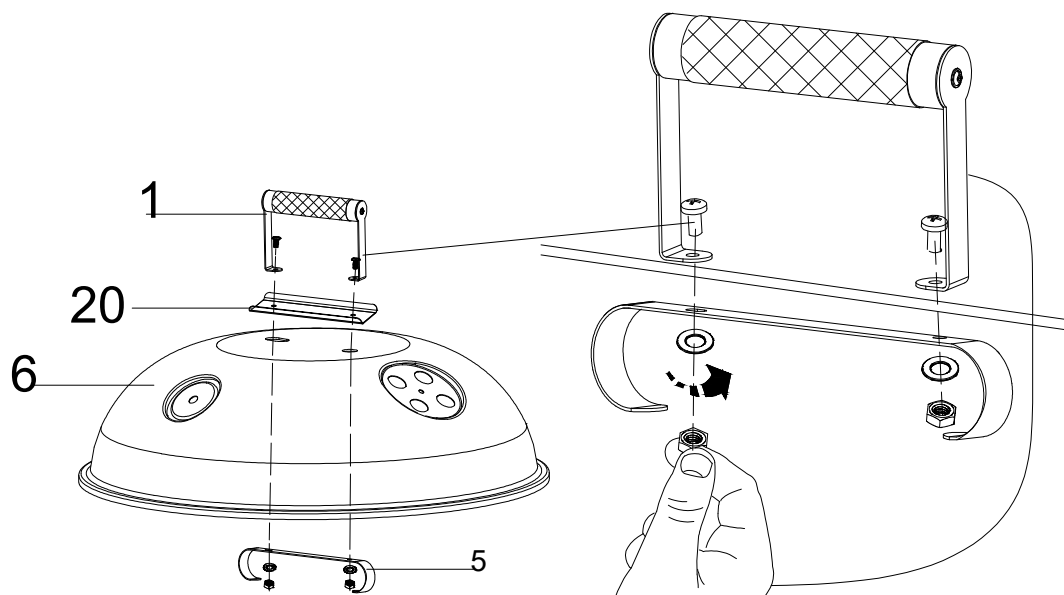
Parts List




Part#	Qty	Description
1	1	Lid Handle
2	2	Fire Bowl Handle
3	1	Lid Damper
4	1	Temperature Gauge
5	1	Lid Bracket
6	1	Lid
7	1	Cooking Grate
8	3	Grate Holder
9	1	Charcoal Grate
10	1	Fire Bowl
11	3	Leg Seat
12	1	Fire Bowl Damper
13	1	Ash Tray Holder
14	1	Ash Tray Handle
15	1	Ash Tray
16	2	Leg for Wheel
17	1	Leg
18	2	Bottom Rack
19	2	Wheel
20	1	Heat Shield
21	1	Grill Cover

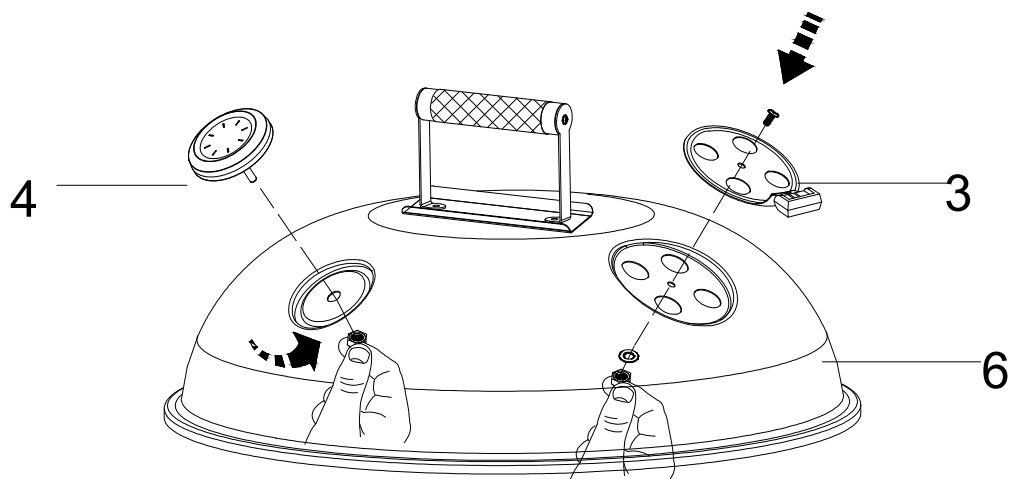
Assembly Instructions

Step 1



A  (M6X12) 2 sets

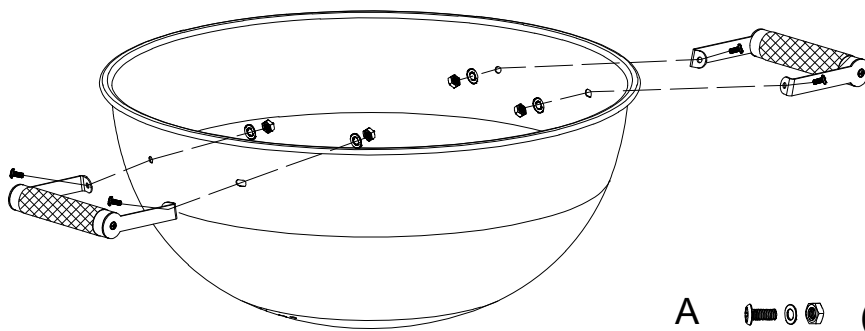
Step 2



A  (M6X12) 1 sets

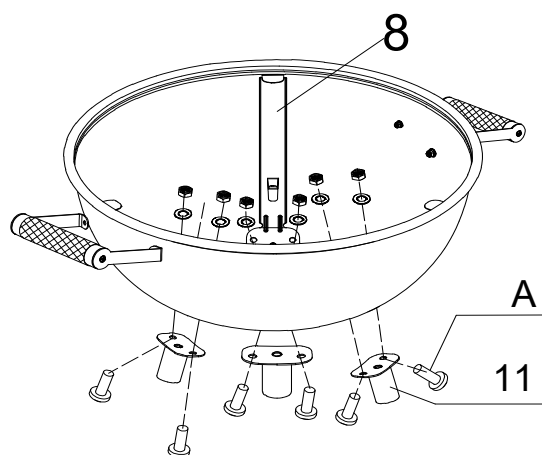
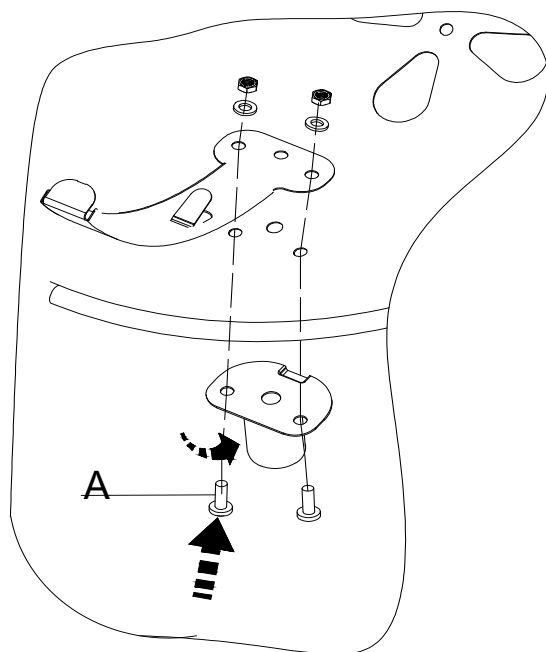
Assembly Instructions

Step 3



A  (M6X12) 4 sets

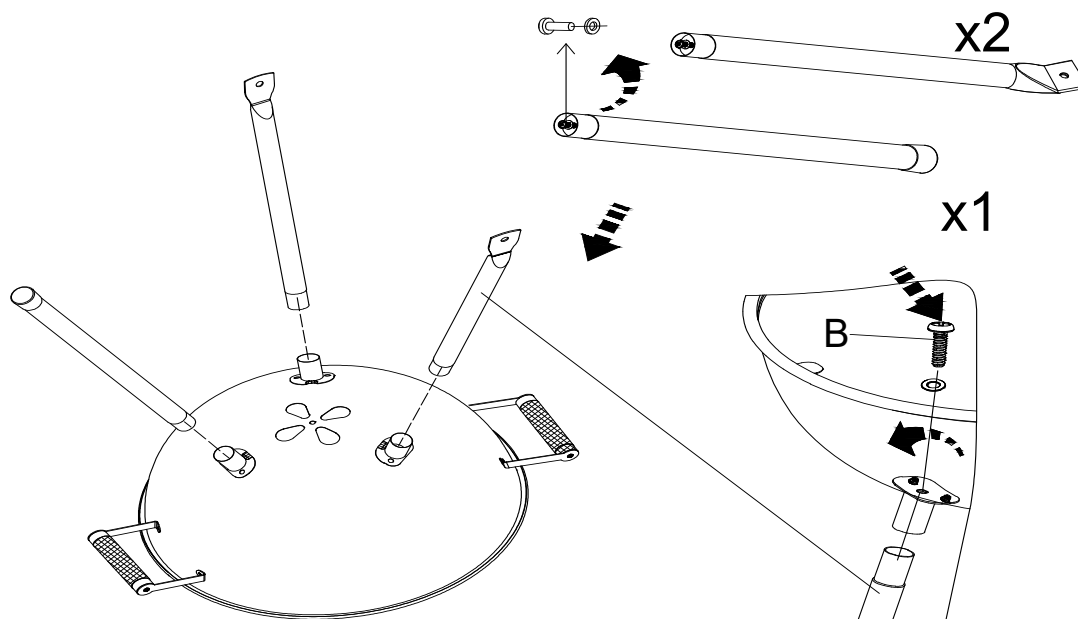
Step 4



A.  (M6X12) 6 sets

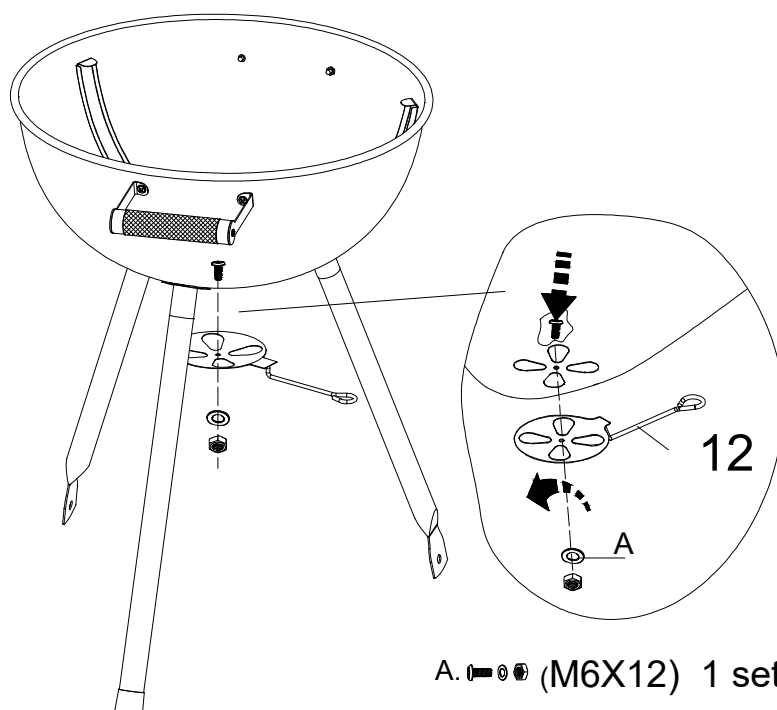
Assembly Instructions

Step 5



B.M6*40 3 sets

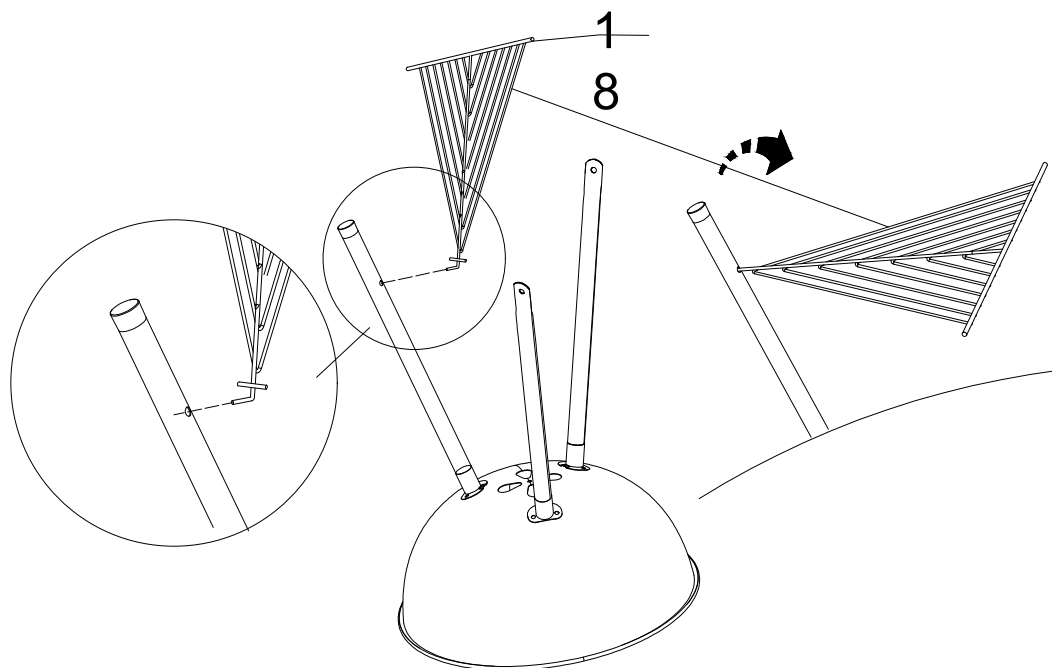
Step 6



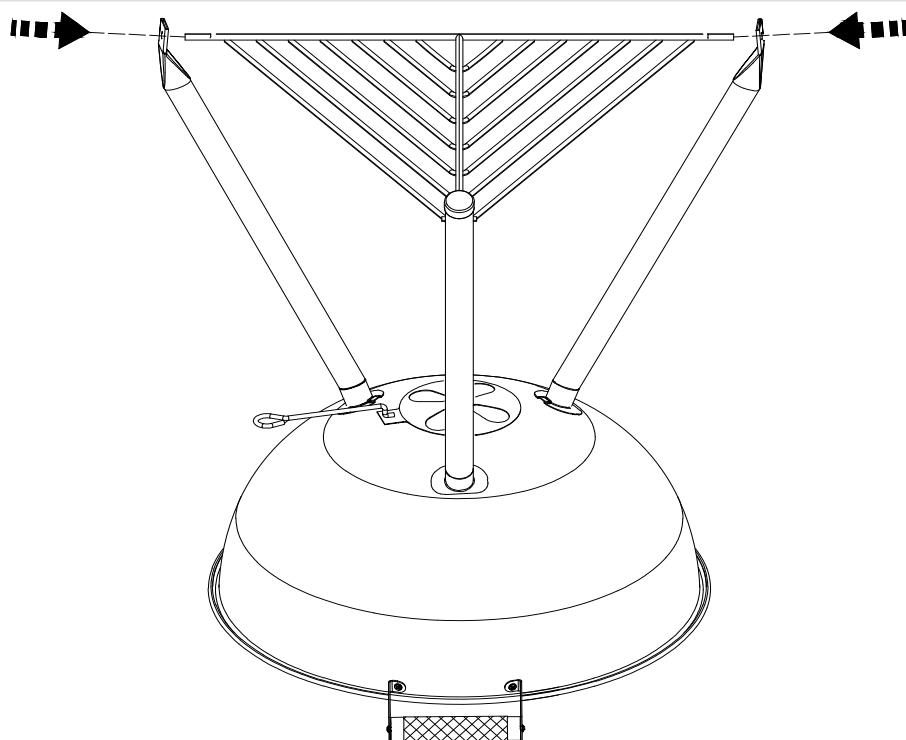
A. (M6X12) 1 set

Assembly Instructions

Step 7

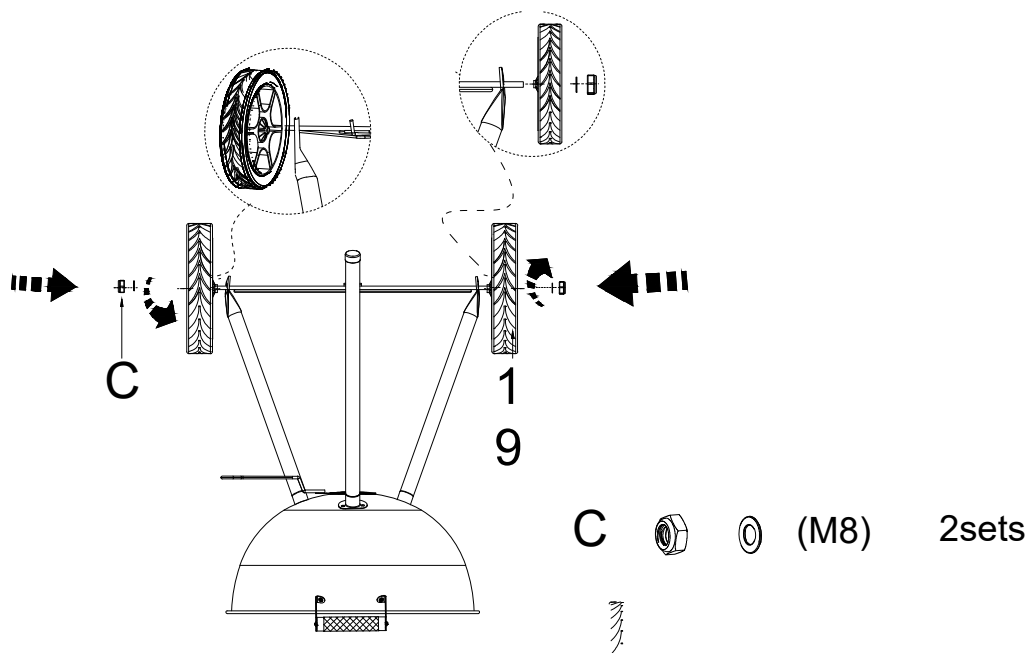


Step 8

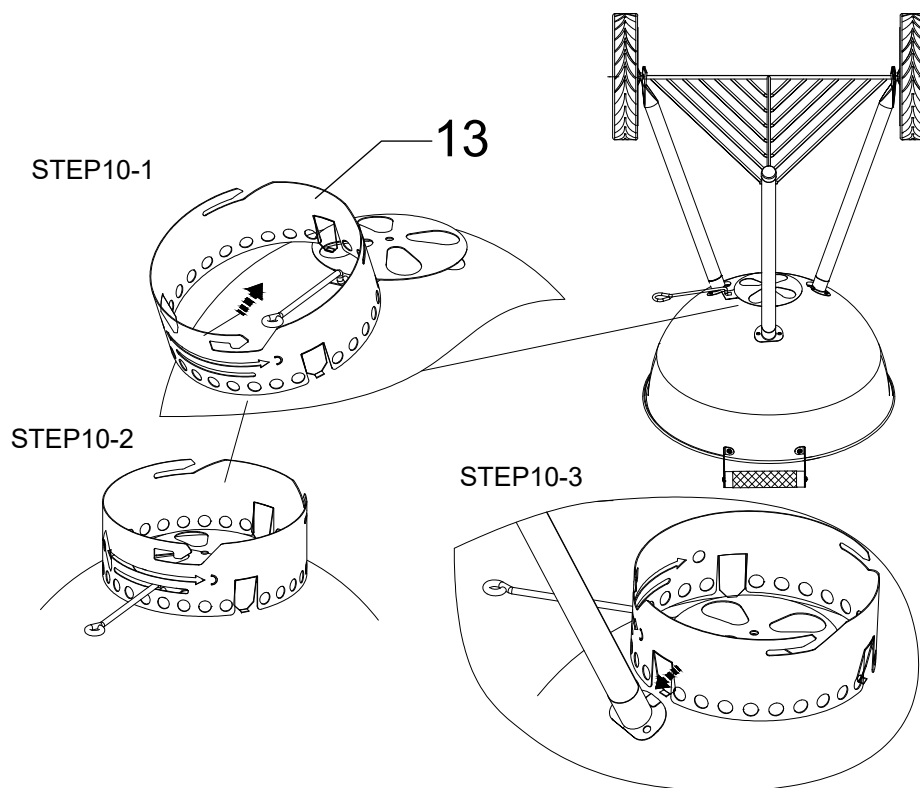


Assembly Instructions

Step 9

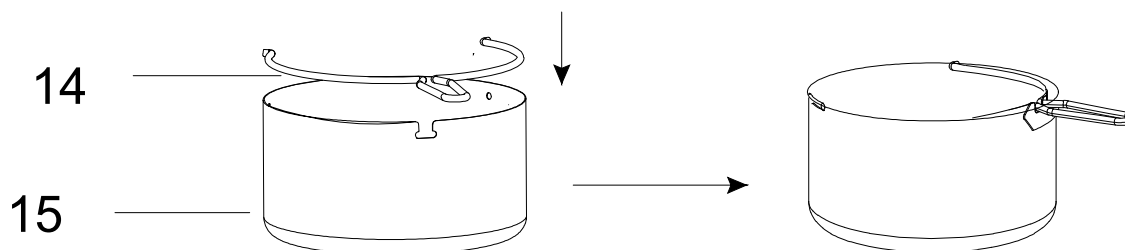


Step 10

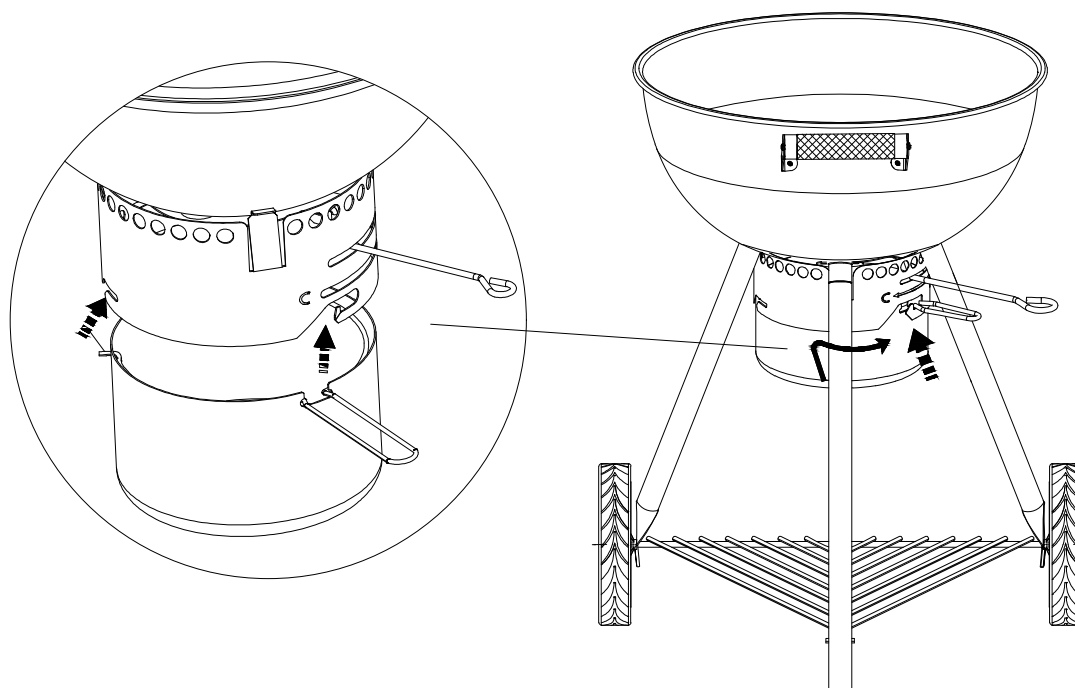


Assembly Instructions

Step 11

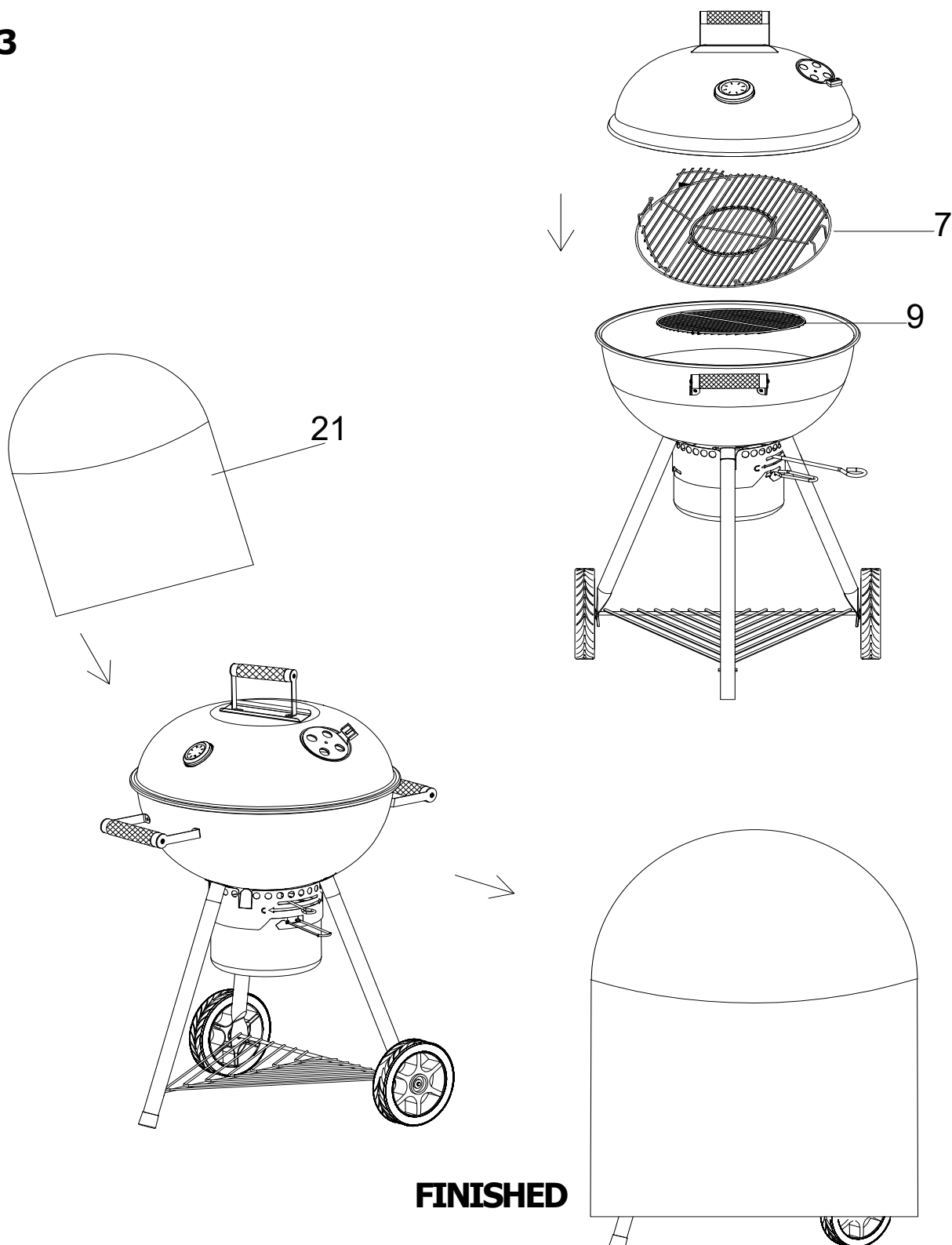


Step 12



Assembly Instructions

Step 13





Installation Checklist

1. **Grill Grates:** Ensure both the cooking and charcoal grates are flat and securely positioned.
2. **Ash Catcher:** Verify the ash catcher is correctly mounted.
3. **Vent Control:** Confirm that all vents can be turned smoothly.
4. **Sturdy Base:** Check that the legs are stable and the grill stands securely.
5. **Packaging Removal:** Double-check that all packaging materials have been removed.

Lighting Instructions

⚠ READ ALL INSTRUCTIONS: BEFORE USING YOUR GRILL, CAREFULLY REVIEW ALL SAFETY WARNINGS AND INSTRUCTIONS.

Preparation:

1. **Remove the Lid:** Lift the lid and secure it to the side of the kettle using the lid hook.
2. **Remove the Cooking Grate:** Take out the top grate.
3. **Clear the Charcoal Grate:** Remove the bottom grate and clean out any ash or old charcoal. Ensure the vents are clear for proper airflow.
4. **Empty the Ash Catcher:** Release the ash catcher and dispose of the ash.
5. **Open the Bowl Vent:** Move the vent handle to the open position.
6. **Replace the Charcoal Grate:** Put the bottom grate back into place.

Cooking and Operating Instructions

⚠ Important Safety Information:

- **Never use charcoal pre-treated with lighter fluid.**
- **Always use high-quality plain charcoal or a charcoal wood mixture.**
- **Do not allow hot coals or wood to touch the grill's walls.**

Using Charcoal Lighting Fluid:

1. **Important:** Only use charcoal lighting fluid approved for lighting charcoal.
2. **Do not use:** gasoline, kerosene, alcohol, or other flammable materials.
3. **Follow:** all manufacturer's warnings and instructions.



Cooking and Operating Instructions (Continued)

To Light the Charcoal:

1. **Start with:** 2.5 pounds of charcoal.
2. **Place:** the charcoal in the center of the charcoal grate.
3. **Saturate:** the charcoal with lighting fluid.
4. **Wait:** 2-3 minutes for the fluid to soak in.
5. **Safely store:** the charcoal lighting fluid away from the grill.
6. **Light:** the charcoal with a match or long-reach lighter, following the packaging instructions.
7. **Spread:** the charcoal evenly across the grate.

To Cook:

1. **Place:** the cooking grate on the grid support brackets.
2. **Place food:** on the cooking grill and close the grill lid.
3. **Reduce heat:** by closing the front air ventilation.
4. **Use a meat thermometer:** to ensure food is fully cooked before removing.

After Cooking:

- **Cool:** the grill completely.
- **Maintain:** the grill according to the instructions of this manual.

⚠ WARNING:

Do not close the grill lid until the charcoal lighting fluid has completely burned off (approximately 20 minutes). Failure to do so can trap flammable fumes inside the grill, posing a serious risk of flash fire or explosion when the lid is opened.

Adding Charcoal or Wood During Cooking

Important:

1. **Stand back** and carefully open the grill lid. Be cautious as flames may flare up when fresh air contacts the fire.
2. **Stand back** a safe distance and use long cooking tongs to gently remove ashes from the hot coals.
3. **Add charcoal or wood** to the charcoal grate using the tongs. Avoid stirring up ashes and sparks.
4. **If needed,** use a charcoal chimney starter to light additional fuel and add it to the fire.
5. **Once the charcoal is burning strongly again,** wear oven mitts or gloves and carefully return the cooking grate to the grill support lips.

⚠ WARNING:

- **Always wear protective gloves or oven mitts** when handling hot surfaces, including when removing the cooking grate.
- **When the charcoal is burning strongly again,** use oven mitts or gloves to carefully return the cooking grate to the grill support lips.



Care and Maintenance

To prolong your grill's life and prevent excessive rust, follow these guidelines:

Cleaning:

- Wash the cooking grate and charcoal grate with hot, soapy water. Rinse thoroughly and dry completely.
- Clean the interior and exterior of the grill with a damp cloth. Apply a light coat of vegetable oil or vegetable oil spray to the interior surface to prevent rust.
- Do not oil the charcoal tray or charcoal ash tray.

Rust Prevention:

- If rust appears on the exterior surface:
 - o Clean and buff the affected area with steel wool or fine-grit emery cloth.
 - o Apply a high-quality, high-temperature resistant paint to touch up the area.
- For rust on the interior surface:
 - o Buff and clean the affected area.
 - o Apply a light coat of vegetable oil or vegetable oil spray to minimize further rusting.
 - o Never paint the interior surface.

Storage:

- Always cover the grill when not in use to protect it from the elements.

Grill Maintenance Tips:

- Clean Regularly: Before each use, remove accumulated ashes and old charcoal from the bottom of the kettle and ash catcher. Ensure the grill is completely cool before cleaning.
- Lid Maintenance: The "paint-like" flakes on the inside of the lid are a normal byproduct of the cooking process. To clean, use a stainless steel bristle grill brush to remove carbonized grease. To minimize future buildup, wipe the inside of the lid with a paper towel while the grill is still warm (not hot).
- Exterior Care: In harsh environments, clean the exterior of the grill more frequently with warm, soapy water. Rinse thoroughly and dry completely. Avoid using sharp objects or abrasive cleaners to prevent damage to the grill's surface.



LIMITED WARRANTY

DURO warrants to the original consumer-purchaser only that this product (Model#SZCKTG22) shall be free from defects in workmanship and materials after correctly assemble and under normal and reasonable home use for the periods indicated below beginning on the date of purchase. The manufacturer reserves the right to require photographic evidence of damage, or that defective parts to be returned, postage and or freight prepaid by the consumer, for review and examination.

Cooking grid: 1 Years LIMITED warranty; does not cover dropping, chipping, scratching, or surface damage.
All other parts: 1 Years LIMITED warranty; does not cover chipping, scratching, cracking surface corrosion, scratches or rust.

Upon consumer supplying proof of purchase as provided herein, Manufacturer will repair or replace the parts which are proven defective during the applicable warranty period. Parts required to complete such repair or replacement shall be free of charge to you except for shipping costs, as long as the purchaser is within the warranty period from the original date of purchase. The original consumer-purchaser will be responsible for all shipping charges of parts replaced under the terms of this limited warranty.
This limited warranty is applicable in the United States only, is only available to the original owner of the product and is not transferable.

Manufacturer requires reasonable proof of your date of purchase. Therefore, you should retain your sales receipt and / or invoice. If the unit was received as a gift, please ask the gift-giver to send in the receipt on your behalf, to the below address. Defective or missing parts subject to this limited warranty will not be replaced without registration or proof of purchase. This limited warranty applies to the functionality of the product ONLY and does not cover cosmetic issues such as scratches, dents, corrosion or discoloration by heat, abrasive and chemical cleaners or any tools used in the assembly or installation of the appliance, surface rust, or the discoloration of stainless steel surfaces. Surface rust, corrosion, or powder paint chipping on metal parts that does not affect the structural integrity of the product is not considered a defect in workmanship or material and is not covered by this warranty. This limited warranty will not reimburse you for the cost of any inconvenience, food, personal injury or property damage. If an original replacement part is not available, a comparable replacement part will be sent. You will be responsible for all shipping charges of parts replaced under the terms of this limited warranty.
ITEMS MANUFACTURER WILL NOT PAY FOR:

- Service calls to your home.
- Repairs when your product is used for other than normal, single-family household or residential use.
- Damage resulting from accident, alteration, misuse, lack of maintenance/cleaning, abuse, fire, flood, acts of God, improper installation, and installation not in accordance with electrical or plumbing codes or use of products not approved by the manufacturer.
- Any food loss due to product failures.
- Pick up and delivery of your product.
- Postage fees or photo processing fees for photos sent in as documentation.
- Repairs to parts or systems resulting from unauthorized modifications made to the product.
- The removal and/or re-installation of your product.
- Shipping cost, standard or expedited, for warranty / non warranty and replacement parts.



LIMITED WARRANTY

DISCLAIMER OF IMPLIED WARRANTIES; LIMITATION OF REMEDIES

Repair or replacement of defective parts is your exclusive remedy under the terms of this limited warranty. Manufacturer will not be responsible for any consequential or incidental damages arising from the breach of either this limited warranty or any applicable implied warranty, or for failure or damage resulting from acts of God, improper care and maintenance, grease fire, accident, alteration, replacement of parts by anyone other than Manufacturer, misuse, transportation, commercial use, abuse, hostile environments (inclement weather, acts of nature, animal tampering), improper installation or installation not in accordance with local codes or printed manufacturer instructions.

THIS LIMITED WARRANTY IS THE SOLE EXPRESS WARRANTY GIVEN BY THE MANUFACTURER. NO PRODUCT PERFORMANCE SPECIFICATION OR DESCRIPTION WHEREVER APPEARING IS WARRANTED BY MANUFACTURER EXCEPT TO THE EXTENT SET FORTH IN THIS LIMITED WARRANTY. ANY IMPLIED WARRANTY PROTECTION ARISING UNDER THE LAWS OF ANY STATE, INCLUDING IMPLIED WARRANTY OF MERCHANT ABILITY OR FITNESS FOR A PARTICULAR PURPOSE OR USE, IS HEREBY LIMITED IN DURATION TO THE DURATION OF THIS LIMITED WARRANTY. Neither dealers nor the retail establishment selling this product has any authority to make any additional warranties or to promise remedies in addition to or inconsistent with those stated above. Manufacturer's maximum liability, in any event, shall not exceed the documented purchase price of the product paid by the original consumer. This warranty only applies to units purchased from an authorized retailer and or re-seller.

NOTE: Some states do not allow an exclusion or limitation of incidental or consequential damages, so some of the above limitations or exclusions may not apply to you; this limited warranty gives you specific legal rights as set for herein. You may also have other rights which vary from state to state.

If you wish to obtain performance of any obligation under this limited warranty, you should write to:

DURO CORPORATION
918 Canada Ct
City of Industry, CA 91748 USA

All consumer returns, parts orders, general questions, and troubleshooting assistance can be acquired by calling our customer service department at 1-888-909-8818, 9:00 a.m.- 5:00 p.m., PST, Monday-Friday. English representatives are available. Send email to: nxrcs@duro-global.com



ITM. / ART. 531543
Model: SZCKTG22

Distributed by:
Costco Wholesale Corporation
P.O. Box 34535
Seattle, WA 98124-1535
USA
1-800-774-2678
www.costco.com

Costco Wholesale Canada Ltd.*
415 W. Hunt Club Road
Ottawa, Ontario
K2E 1C5, Canada
1-800-463-3783
www.costco.ca
* faisant affaire au Québec sous
le nom les Entrepôts Costco

Importado por:
Importadora Primex S.A. de C.V.
Blvd. Magnocentro No. 4
San Fernando La Herradura
Huixquilucan, Estado de México
C.P. 52765
RFC: IPR-930907-S70
(55)-5246-5500
www.costco.com.mx

Costco Wholesale Australia Pty Ltd
17-21 Parramatta Road
Lidcombe NSW 2141
Australia
www.costco.com.au

Costco Wholesale UK Ltd /
Costco Online UK Ltd
Hartspring Lane
Watford, Herts
WD25 8JS
United Kingdom
01923 213113
www.costco.co.uk

Costco Wholesale Spain S.L.U.
Polígono Empresarial Los Gavilanes
C/ Agustín de Betancourt, 17
28906 Getafe (Madrid) España
NIF: B86509460
900 111 155
www.costco.es

Costco Wholesale Iceland ehf.
Kauptún 3-7, 210 Gardabaer
Iceland
www.costco.is

Costco France
1 avenue de Bréhat
91140 Villebon-sur-Yvette
France
01 80 45 01 10
www.costco.fr

Costco Wholesale Japan Ltd.
2 Kakuchi, 2 Gaiku, Kaneda-Nishi
361 Urakura, Kisarazu shi
Chiba, 292-0007 Japan
0570-200-800
www.costco.co.jp

Costco Wholesale Korea, Ltd.
40, Iljik-ro
Gwangmyeong-si
Gyeonggi-do, 14347, Korea
1899-9900
www.costco.co.kr

Costco Wholesale New Zealand Limited
2 Gunton Drive
Westgate
Auckland 0814
New Zealand
www.costco.co.nz

Costco (China) Investment Co., Ltd.
Room 01 Mezzanine
No. 5178, Kang Xin Highway
Pudong New District
Shanghai
China 201315
+86-21-6257-7065

Costco Wholesale Sweden AB
Box 614
114 11 Stockholm
Sweden
www.costco.se

MADE IN CHINA