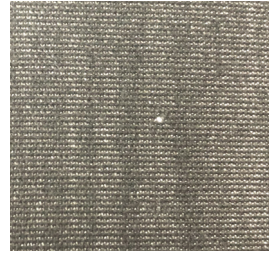
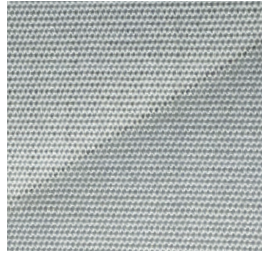


Customer Information

Woven from solution-dyed acrylic fibres, our high-quality fabrics are developed and manufactured to exacting standards. However, you may notice small irregularities in your fabric once fitted. These are inherent to acrylic fibre and do not in any way detract from the quality, performance or durability of your fabric. Neither the fabric manufacturer nor your fitter can therefore be held responsible for these slight alterations.

Awnings are made from panels of fabric sewed, glued and welded together. This inevitably causes overthick joints and hems, causing crimping or cockling, folds, and loosened edges due naturally to the action of the wind, which may be visible at the seams and in the centre of panels. In addition, due to its weave and tension during fitting and use, some light spots may appear, particularly on Dutch canopies.



These minor irregularities do not require the fabric to be changed and may be mitigated by appropriate adjustment and by following the recommendations of European sun protection organisations. For more information, please read the maintenance guide available on our website www.dickson-constant.com. We also recommend you use Tex'Aktiv Clean and Guard products regularly to keep your fabric in good condition.

Its high-performance fibres, coatings and weaving processes enable Dickson to guarantee its fabrics for up to 10 years. If you notice any anomalies relating to the colourfastness, mold resistance and mechanical resistance of our fabrics, please let us know.

