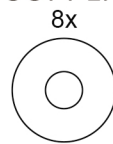


# ASSEMBLY INSTRUCTIONS

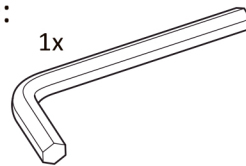
CAUTION: HEAVY - MAY REQUIRE 2 PERSONS

Place table top upside down on a soft clean cloth taking care to avoid scratching the surface.

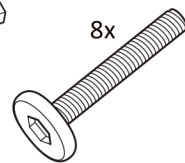
SUPPLIED:



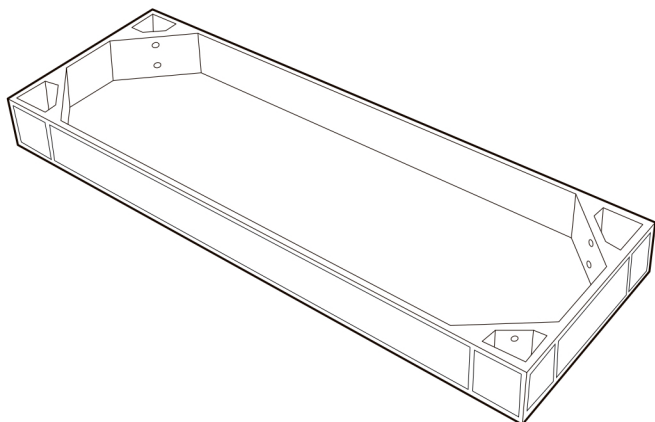
1x



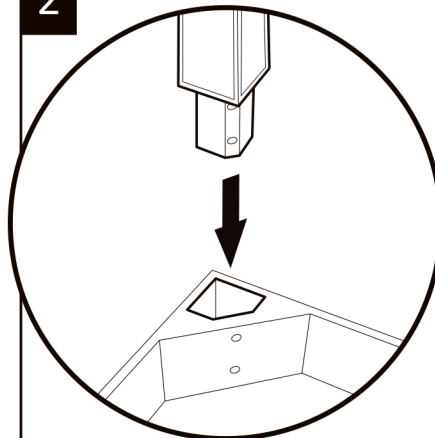
8x



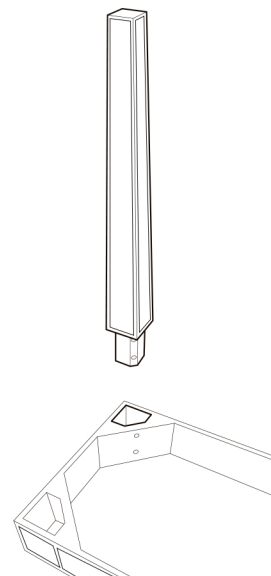
1



2

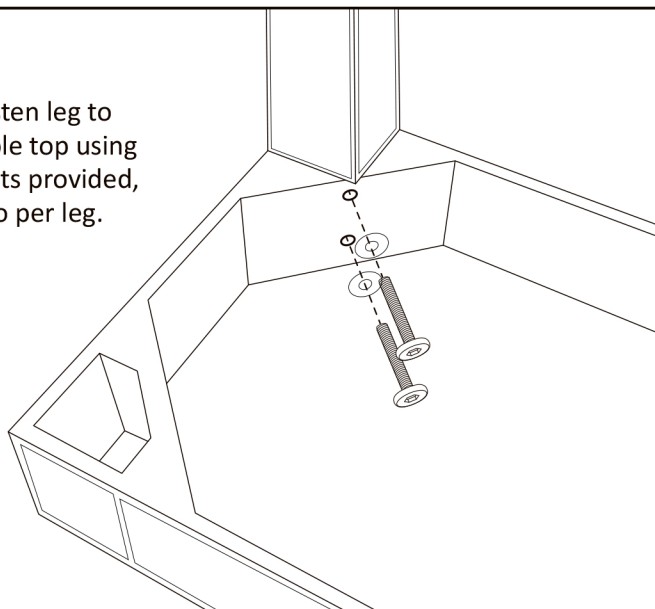


Insert leg into recess of table top.  
Take care not to chip the glass edges.

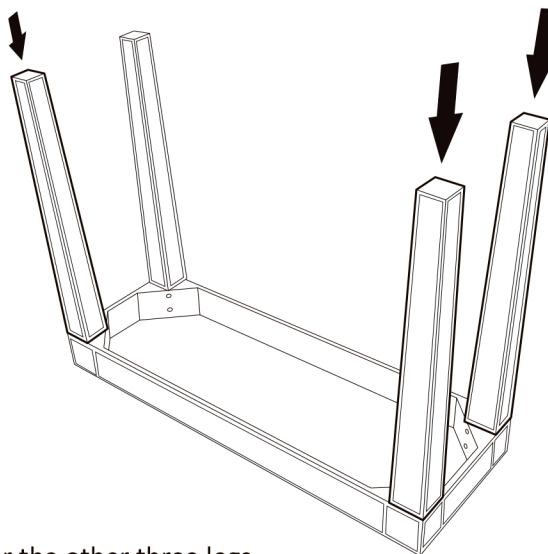


3

Fasten leg to table top using bolts provided, two per leg.

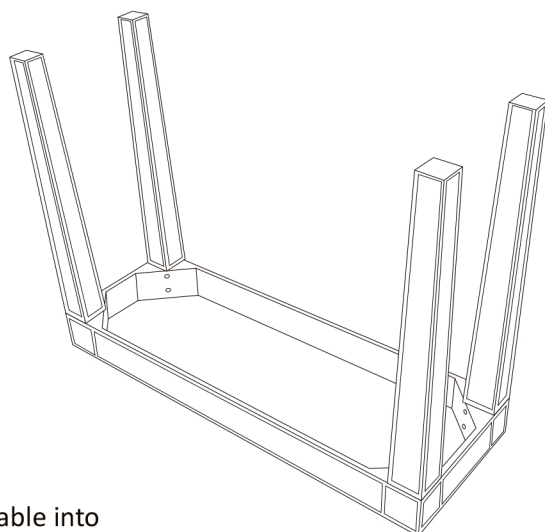


4

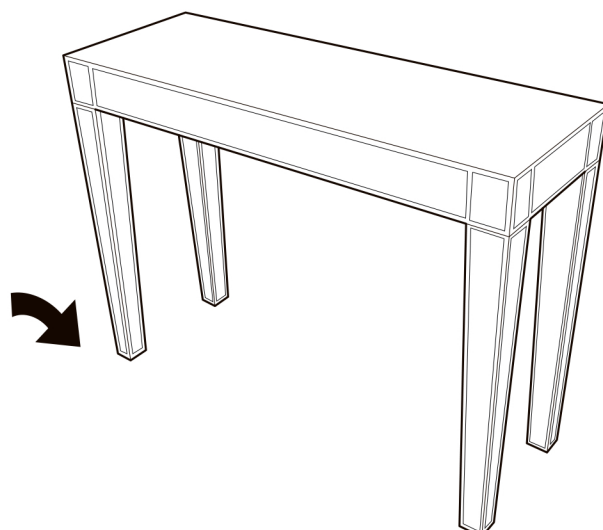


Repeat for the other three legs.

5



Carefully lift table into the upright position.



# ANTI-TOPPLE DEVICE - FITTING INSTRUCTIONS

**IMPORTANT:** This anti-topple device is supplied with this item to increase the safety of your home. For optimum performance the device must be fitted to this product in accordance with the instructions below.

The screw supplied with the anti-topple device is to be used only for fixing the device to the product. In addition to this you will need to choose a screw or fixing which is appropriate for securing the device to the type of walls you have. If you are unsure about what type of fixing you require, please seek advice of a professional who has experience of fitting this type of item. The anti-topple device must not be modified or altered in any way.

**CAUTION: HEAVY - ITEM MAY REQUIRE 2 PERSONS.** Place table in intended final position to measure the location for the device into you wall.

