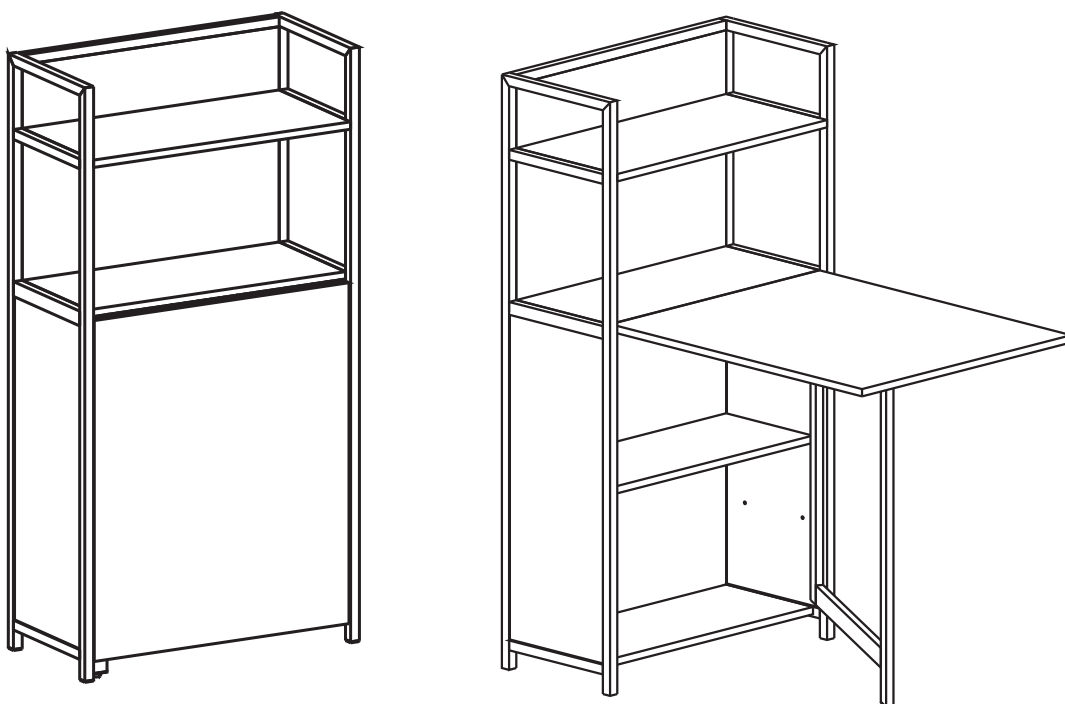


# CED-102 Folding Home & Study Office Desk

## ASSEMBLY INSTRUCTIONS

Thank you for purchasing one of our products.  
Please read carefully before assembly and retain for future reference



Box Dimensions: 127x67x11cm  
Assembled Dimensions: 62x121x30cm



**TWO PEOPLE REQUIRED**

**Model: CED-102**

### General Care:

- Keep out of direct sunlight
- Use desk pads and coasters to protect your desk surface from moisture damage and hot liquid staining

### Cleaning:

- Wipe the surface with damp (not wet) cloth or wipe dry with a clean lint free cotton cloth



### Warning

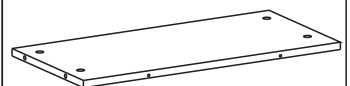
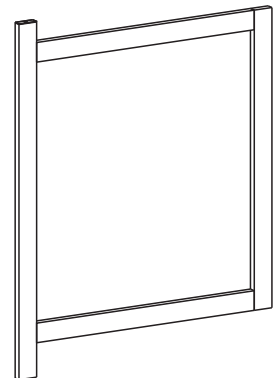
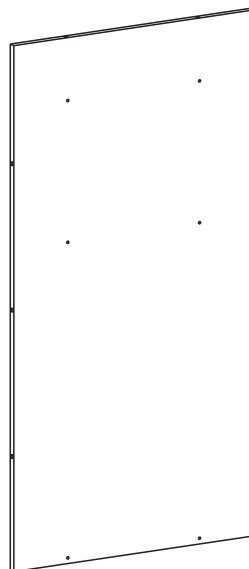
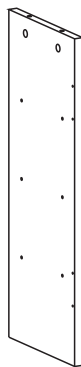
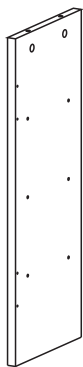
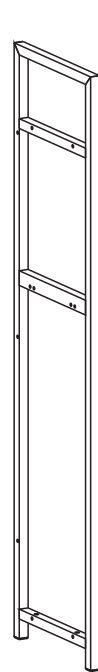
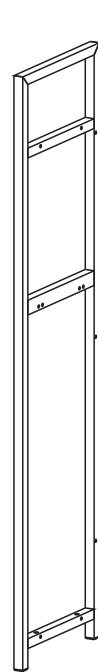
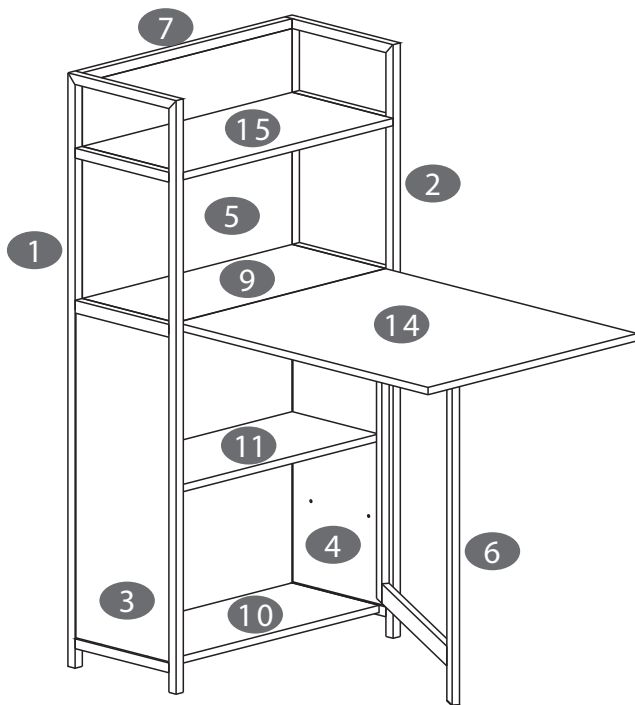
- This desk weighs 28kg, please take care when handling
- To prevent personal injury ensure your desk is secured to the wall using supplied brackets

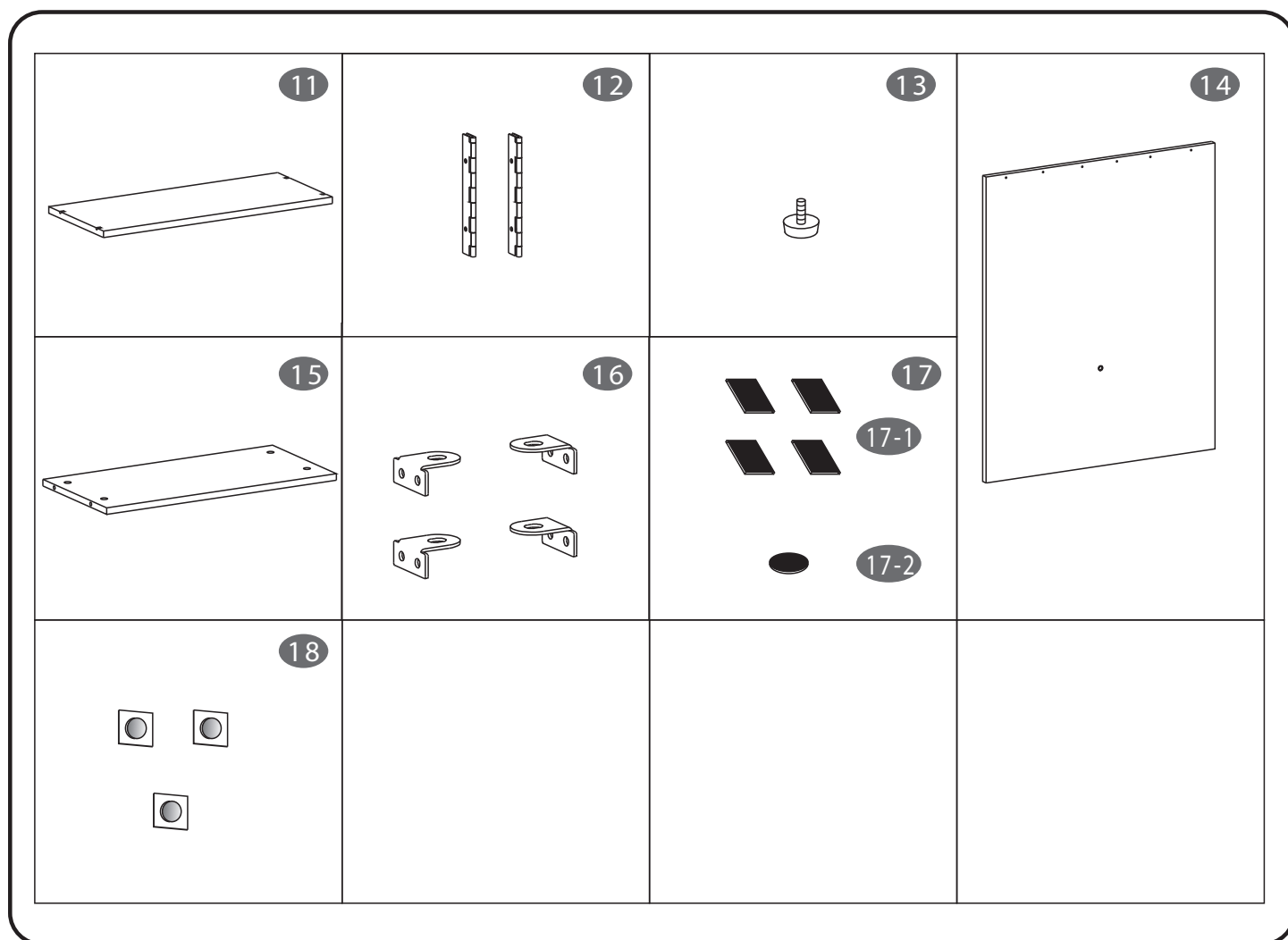
To prevent damage during assembly take care with all parts and place  
on a towel or other soft surface



## ■ PARTS LIST

Please unpack and check all parts before assembly and identify each item as per page 2 and 3





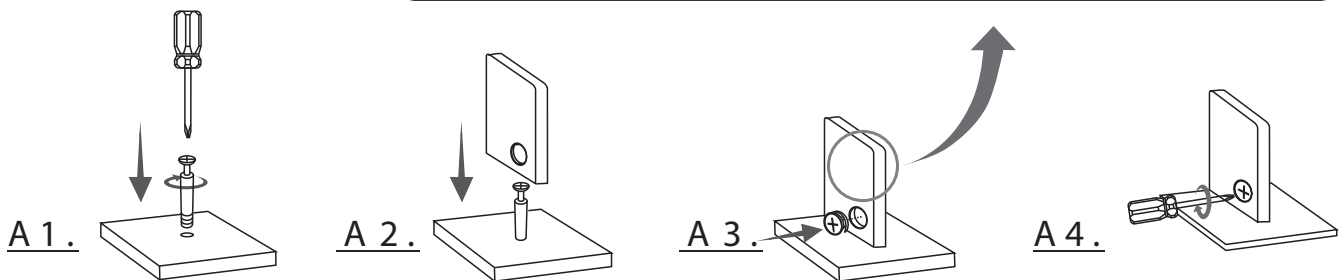
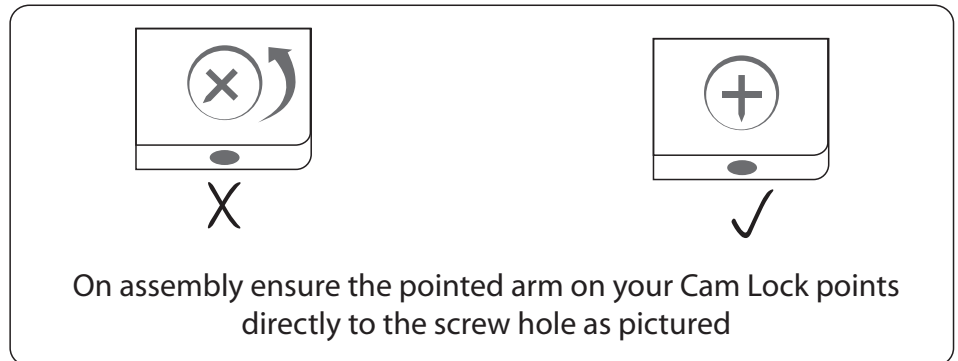
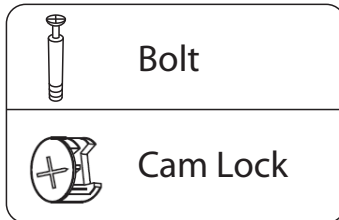
## ■ FITTINGS

PART	QTY.	ITEM	
<b>A</b>	6	5X40 MM	
<b>B</b>	4	5X45 MM	
<b>C</b>	10	4X16 MM	
<b>D</b>	20	6X40 MM	
<b>E</b>	4	6X12 MM	
<b>F</b>	4	Φ5X17 MM	

PART	QTY.	ITEM	
<b>G</b>	16	4X16 MM	
<b>H</b>	1	Φ6 MM	
<b>I</b>	2		
<b>J</b>	12	Φ15 MM	
<b>K</b>	8	Φ12 MM	
	1		

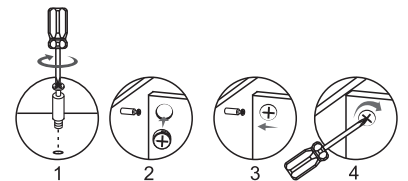
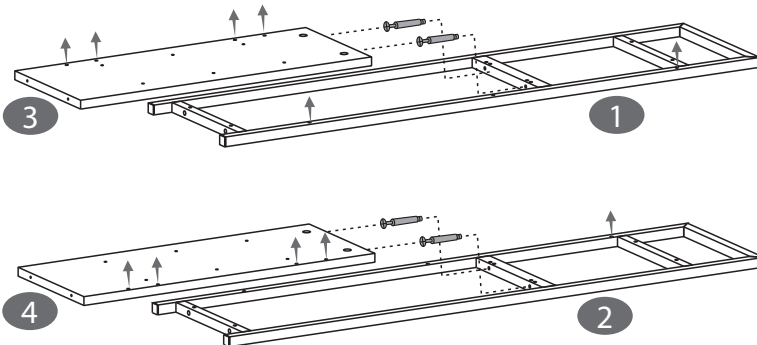


## Install 6x40mm Bolts **D** As Instructed Below



## ■ ASSEMBLY STEPS

1



### ■ SCREWS

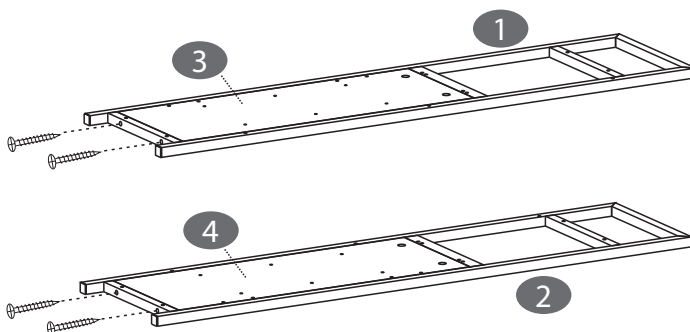
**D** 6X40 MM

4PCS

**J**  $\Phi$ 15 MM

4PCS

2



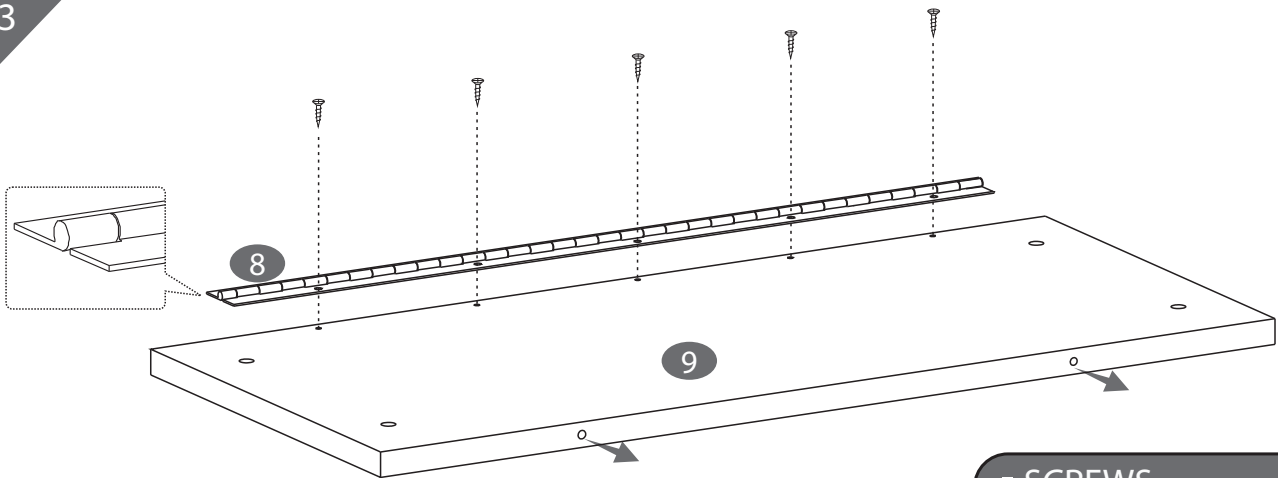
### ■ SCREWS

**B** 5X45 MM

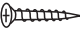
4PCS



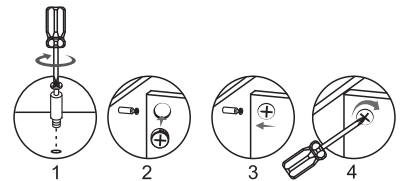
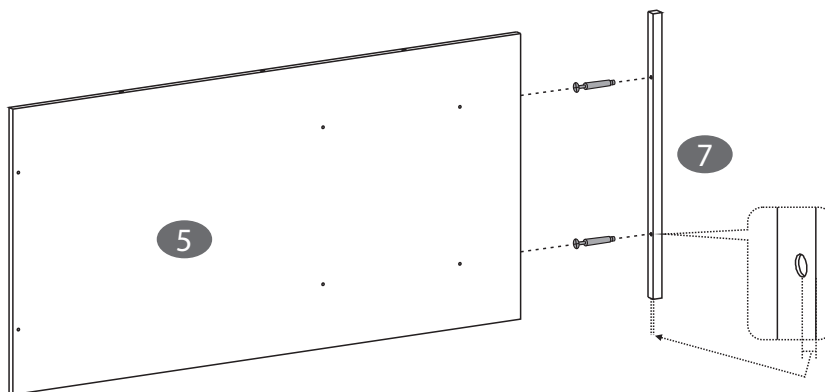
3




## ■ SCREWS

**C** 4X16 MM 5PCS

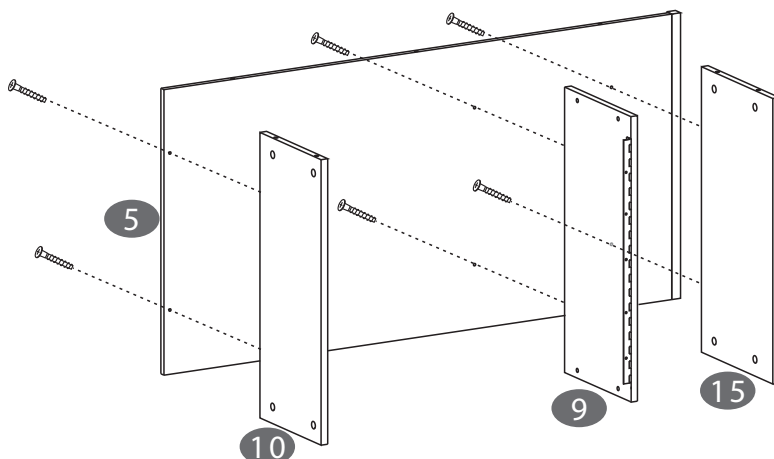
4



## ■ SCREWS

**D** 6X40 MM 2PCS**K**  $\Phi$ 12 MM 2PCS

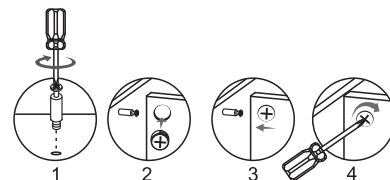
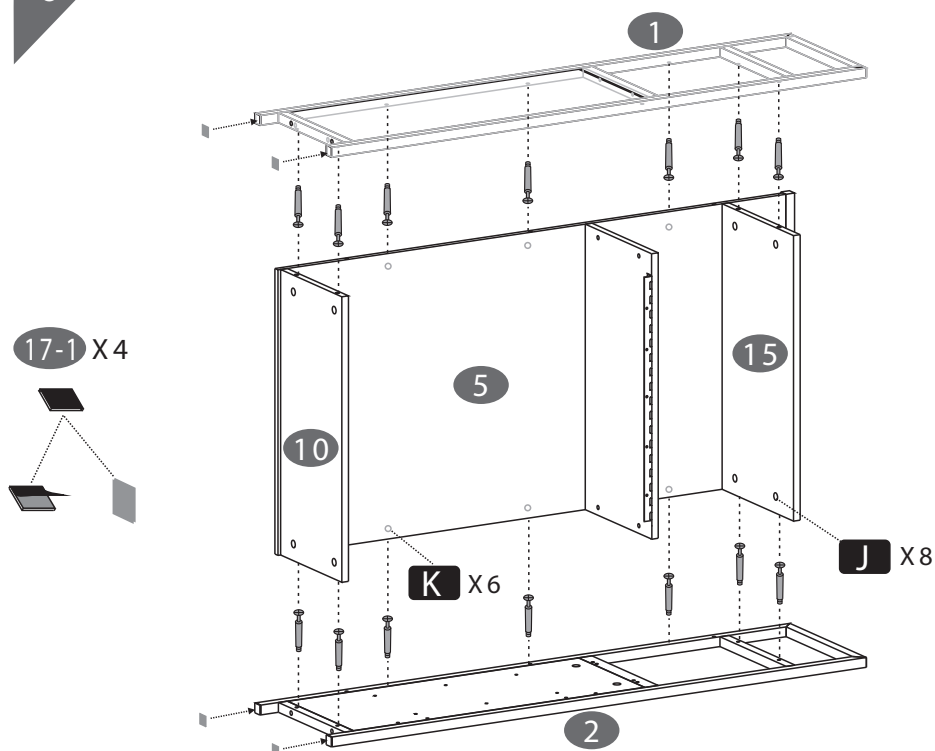
5



## ■ SCREWS

**A** 5X40 MM 6PCS

6



#### SCREWS

**D** 6X40 MM

14PCS

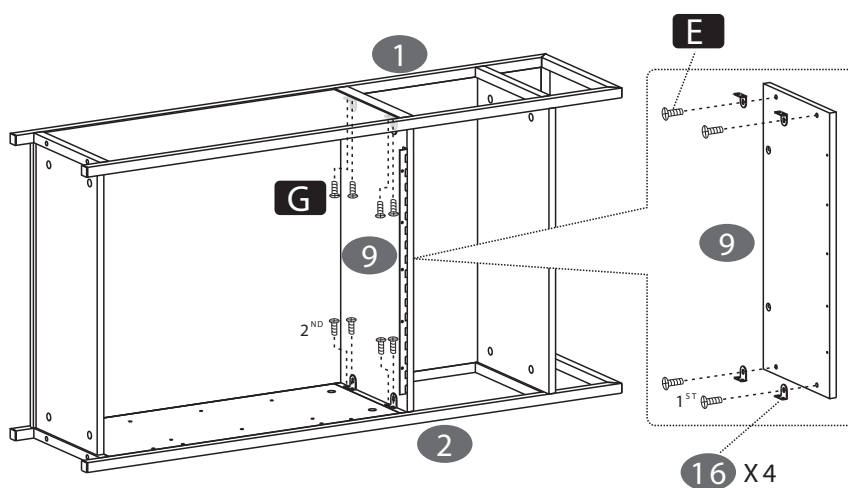
**J**  $\Phi$ 15 MM

8PCS

**K**  $\Phi$ 12 MM

6PCS

7



#### SCREWS

**E** 6X12 MM

4PCS

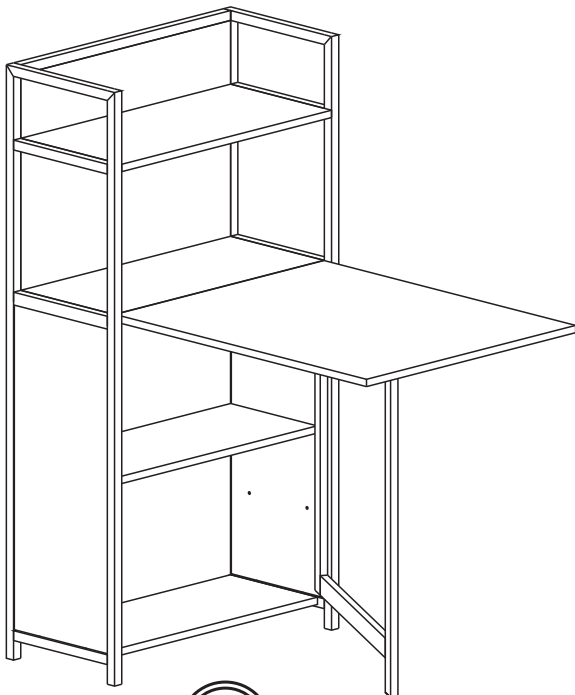
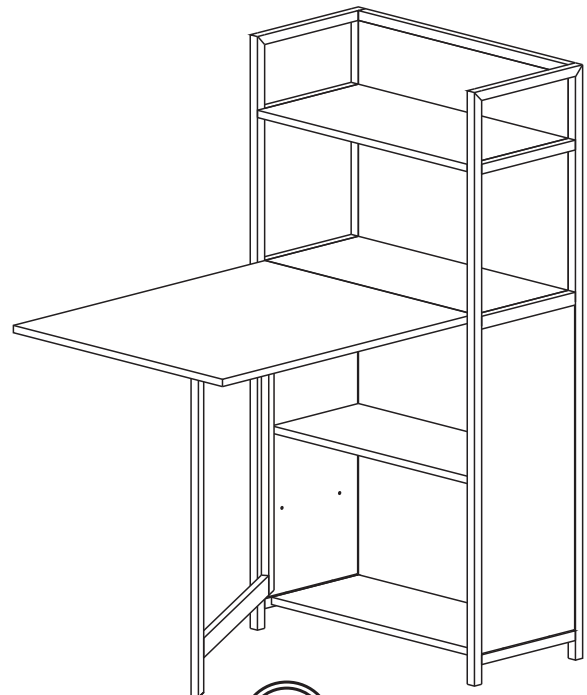
**G** 4X16 MM

8PCS

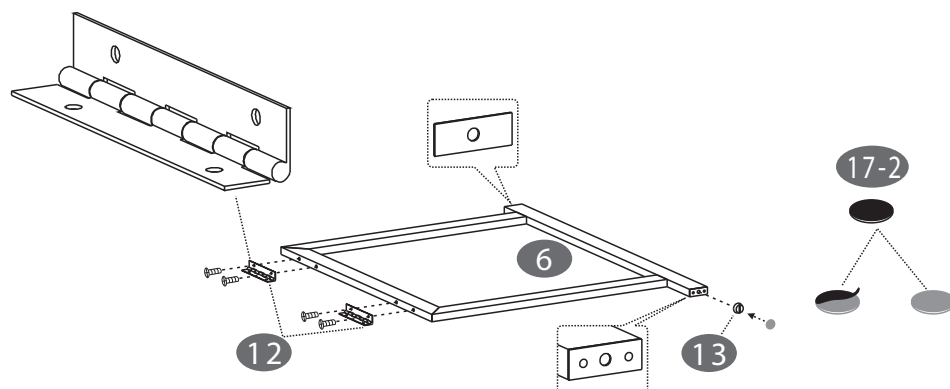


You have the option to assemble your desk with work surface opening to the left or to the right.

- A. If you wish for your work surface to open to the right, please follow assembly steps A1-A6.
- B. If you wish for your work surface to open to the left, please follow assembly steps B1-B6

**A**A1-A6**B**B1-B6

A1



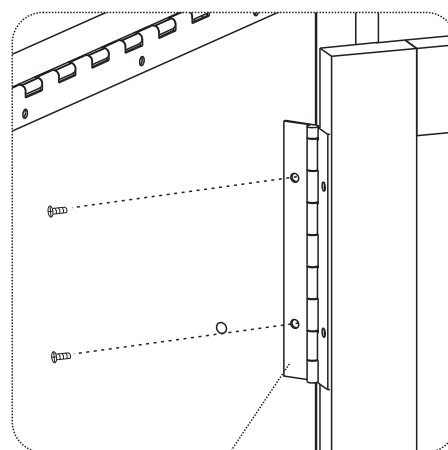
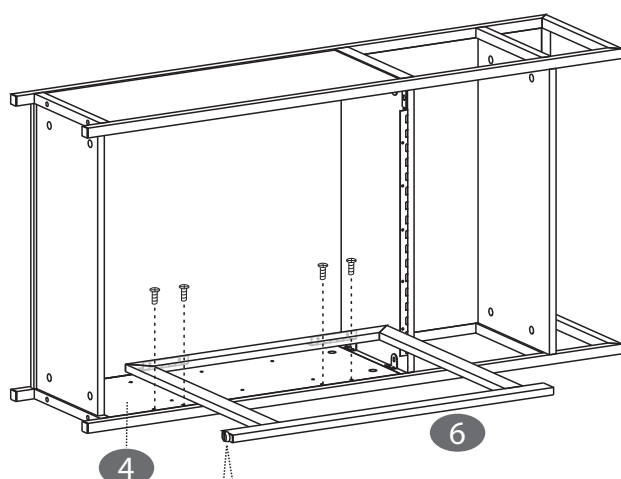
## ■ SCREWS

G 4X16 MM

4PCS



A2



12 X2

## ■ SCREWS

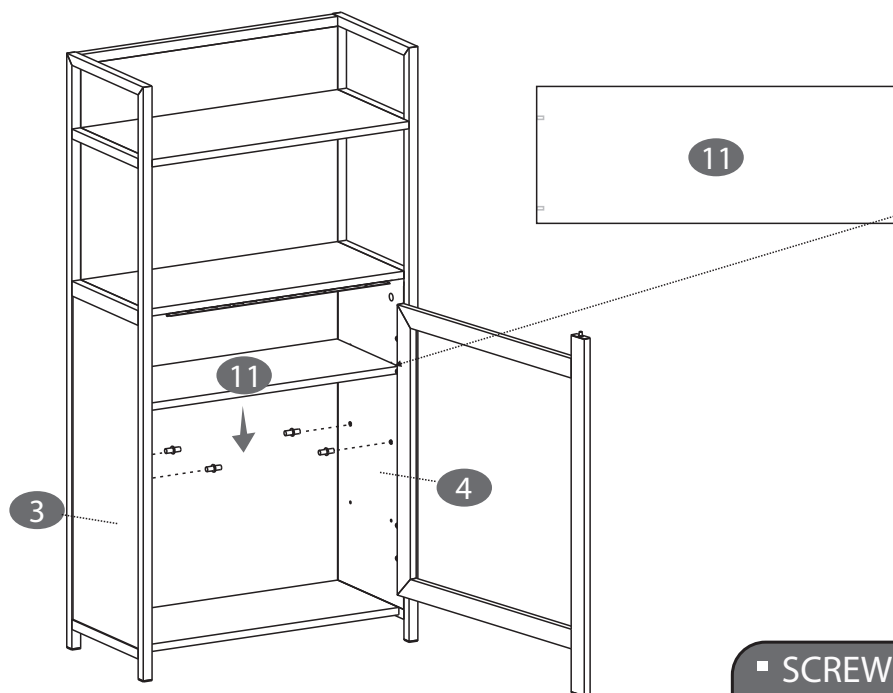
G 4X16 MM

4PCS





A3

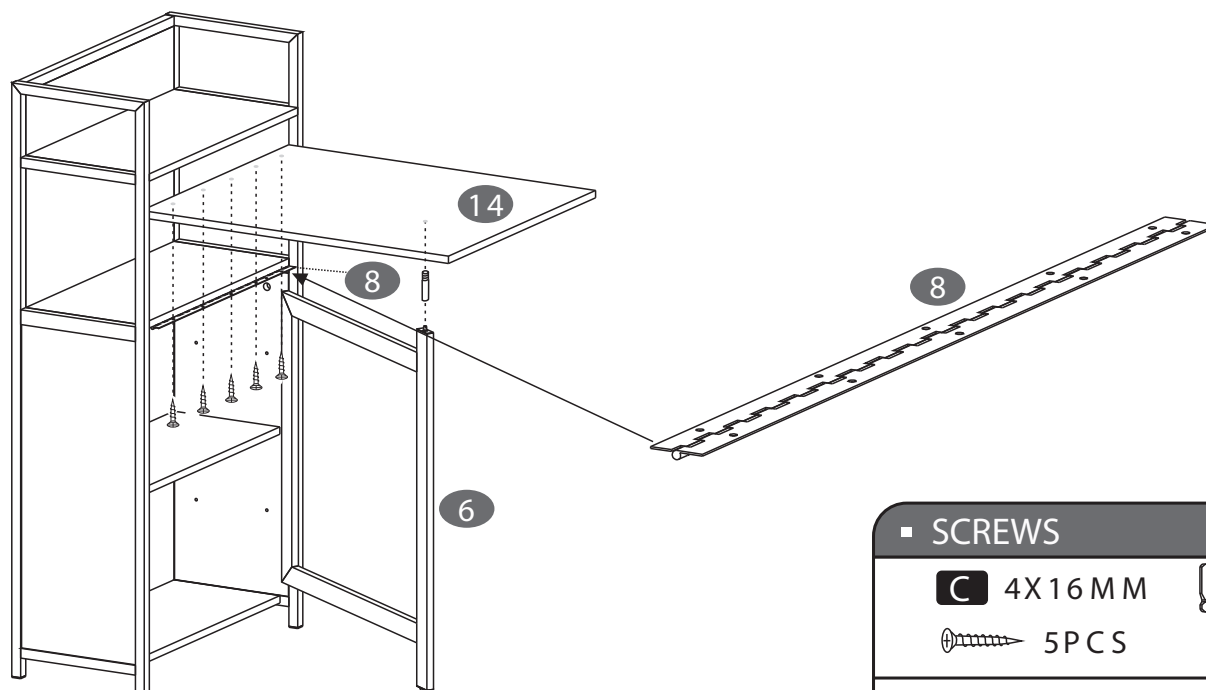


#### SCREWS

**F**  $\Phi 5 \times 17 \text{ MM}$

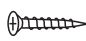
 4 PCS

A4



#### SCREWS

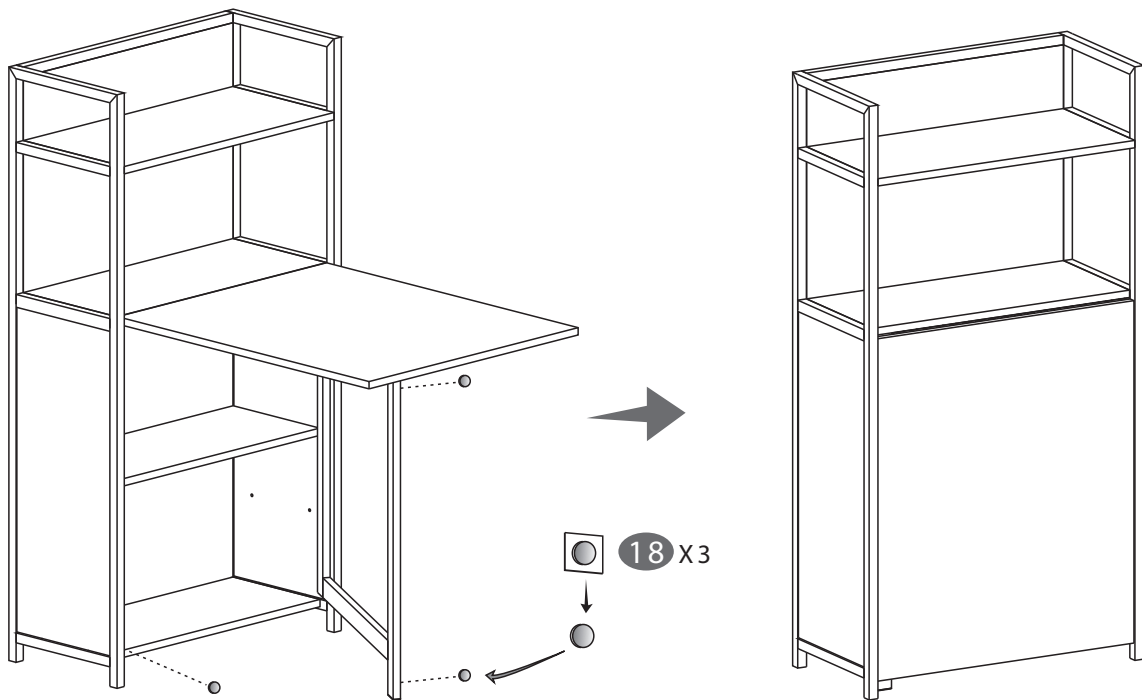
**C**  $4 \times 16 \text{ MM}$

 5 PCS

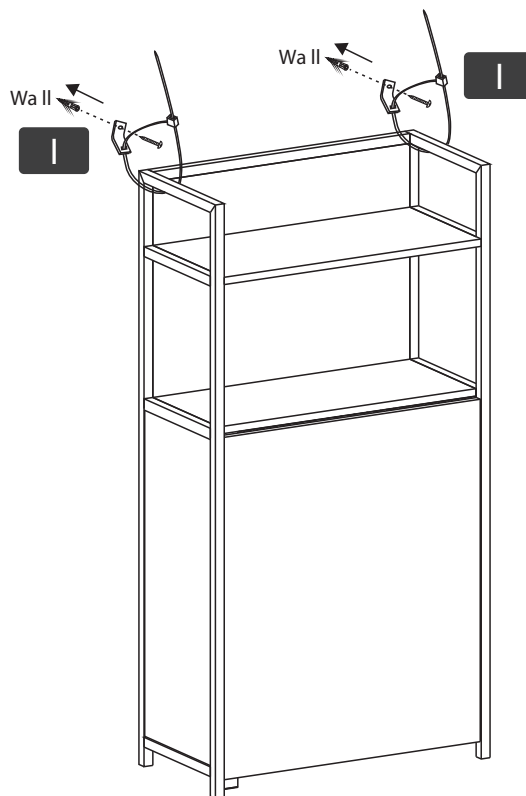
**H**  $\Phi 6 \text{ MM}$

 1 PC

A5



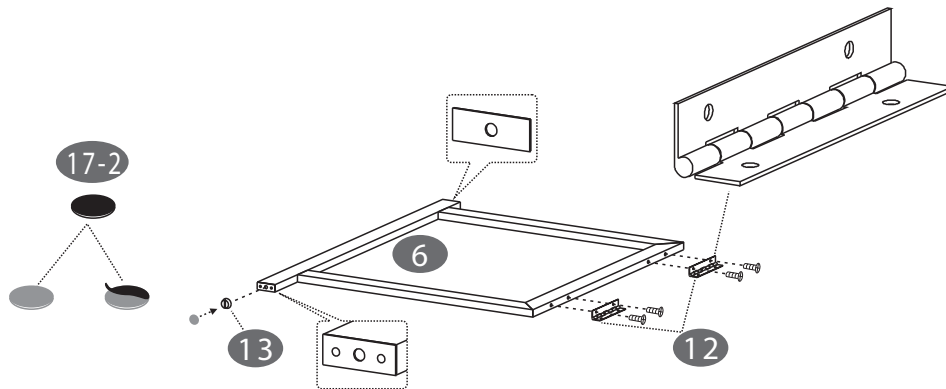
A6



ATTENTION

Please use the supplied wall fasteners to prevent personal injury.  
You will need to use appropriate fixings suitable for your wall (not supplied)

B 1



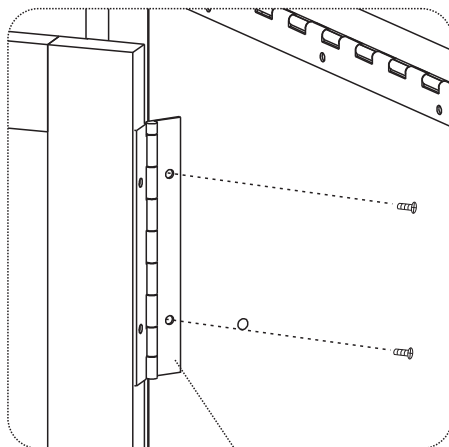
## ■ SCREWS

G 4X16 MM

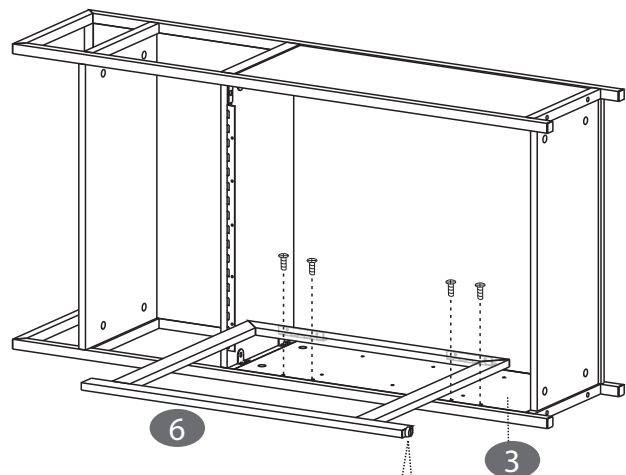
4PCS



B 2



12 X2



## ■ SCREWS

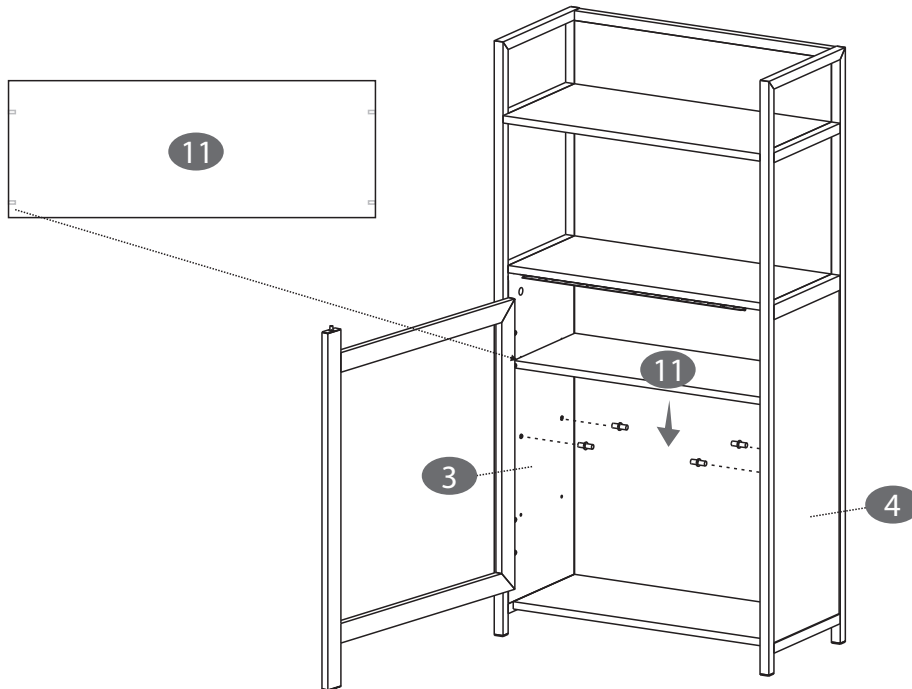
G 4X16 MM

4PCS






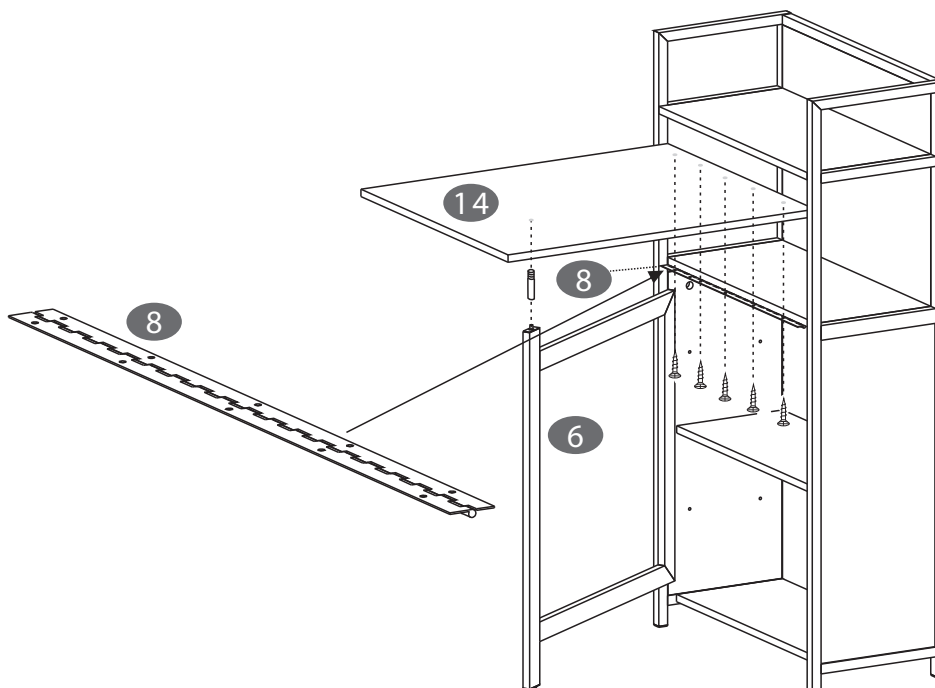
B 3




## ■ SCREWS

**F**  $\Phi 5 \times 17 \text{ MM}$  4 PCS

B 4

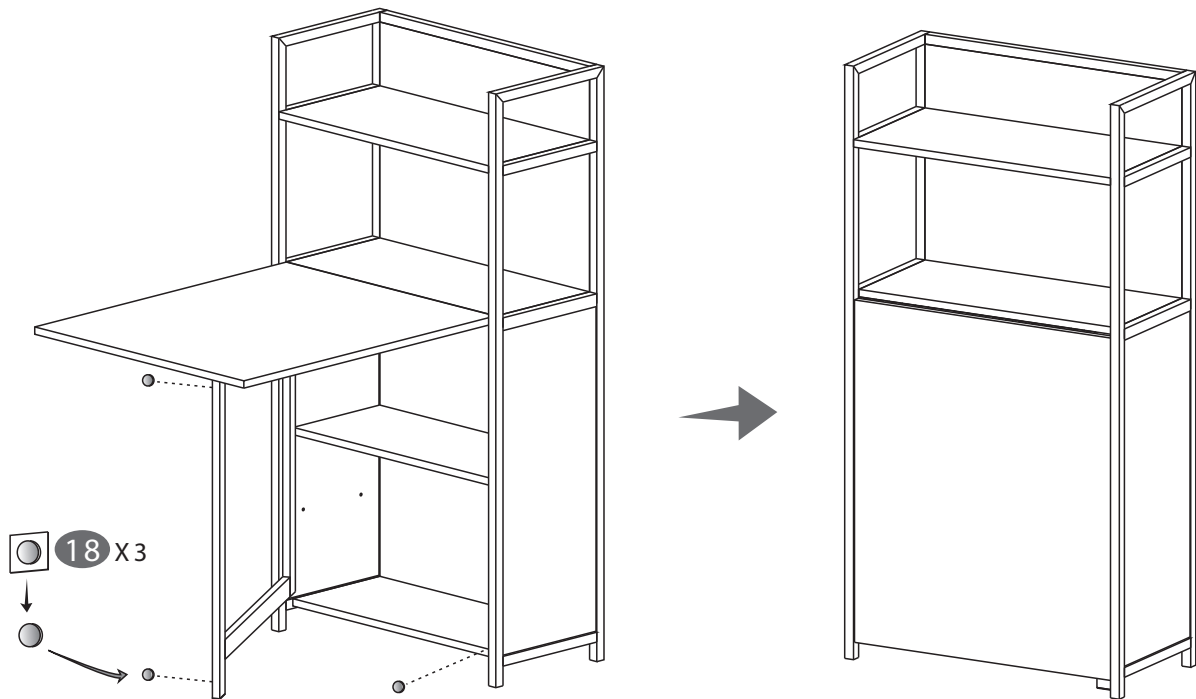


## ■ SCREWS

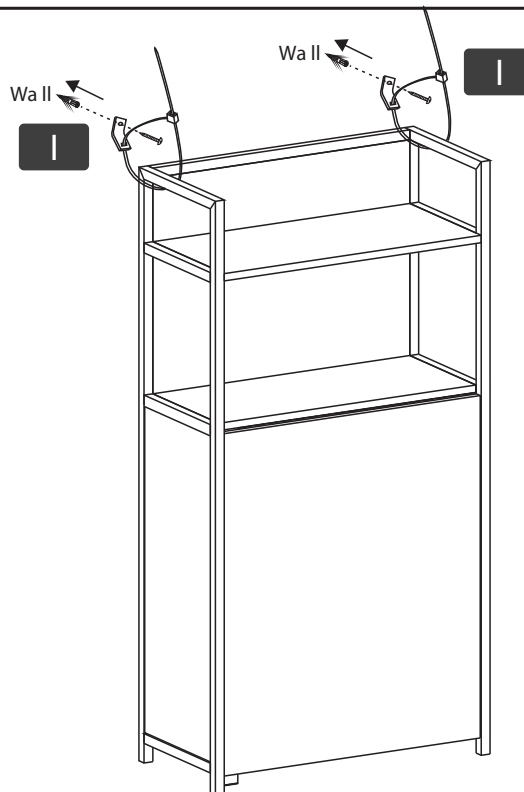
**C** 4X16 MM 5 PCS**H**  $\Phi 6 \text{ MM}$  1 PC



B 5



B 6

**ATTENTION**

Please use the supplied wall fasteners to prevent personal injury

You will need to use appropriate fixings suitable for your wall (not supplied)