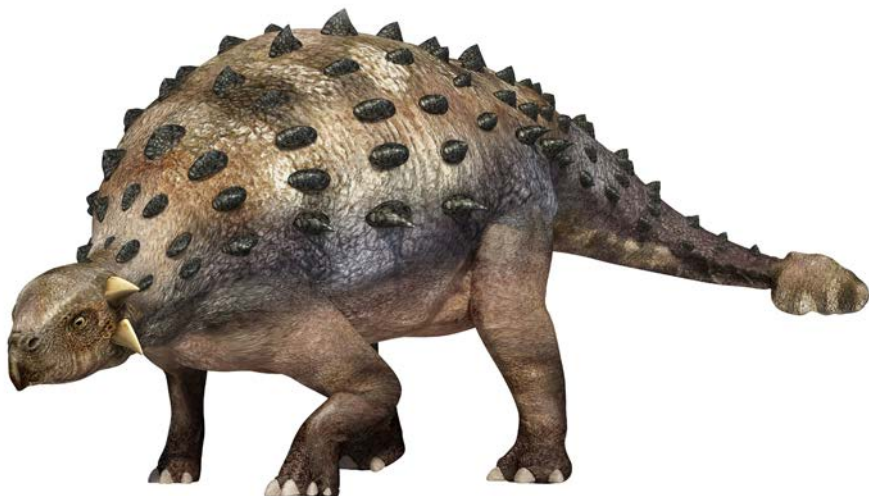
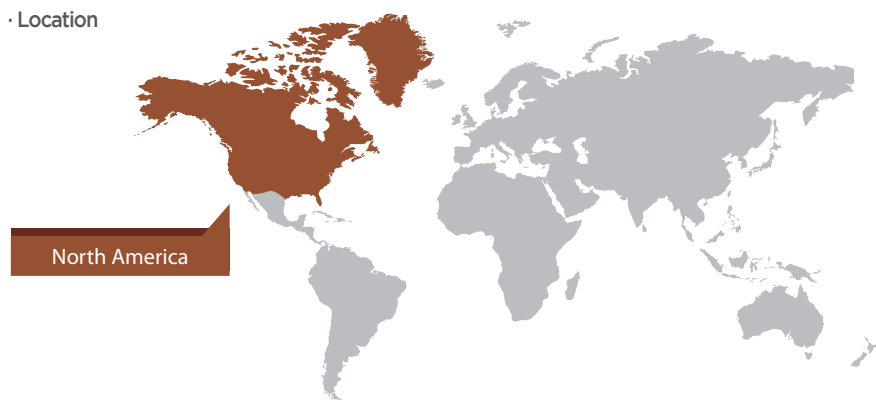


HERBIVORE



Ankylosaurus

Meaning : Fused Lizard





Ankylosaurus



x 10



x 2



x 18



x 4



x 4



x 4



x 2



x 4



x 2

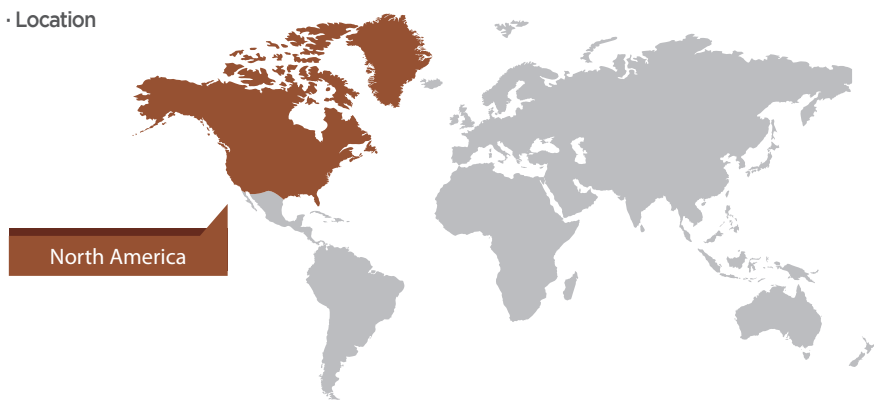


HERBIVORE



Pachycephalosaurus

Meaning : Thick-Headed Lizard





Pachycephalosaurus



x 4



x 8



x 16



x 4



x 4



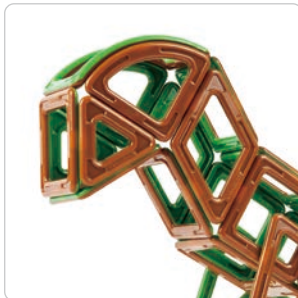
x 2



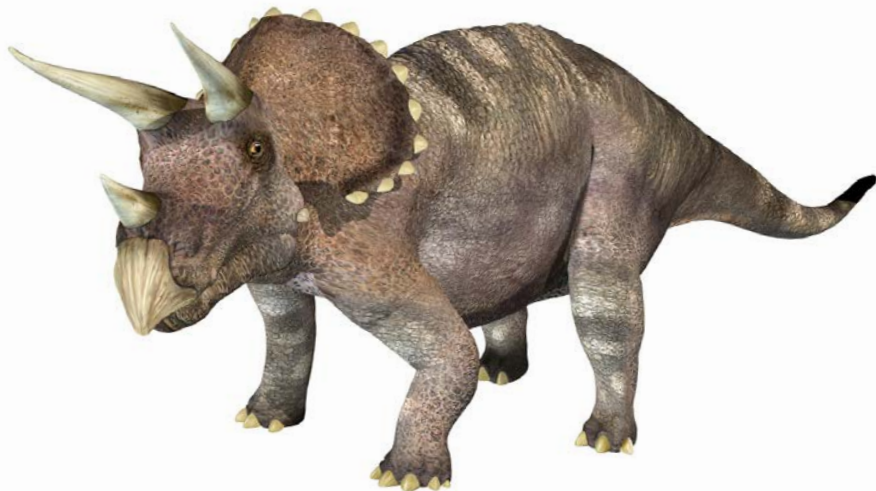
x 2



x 1



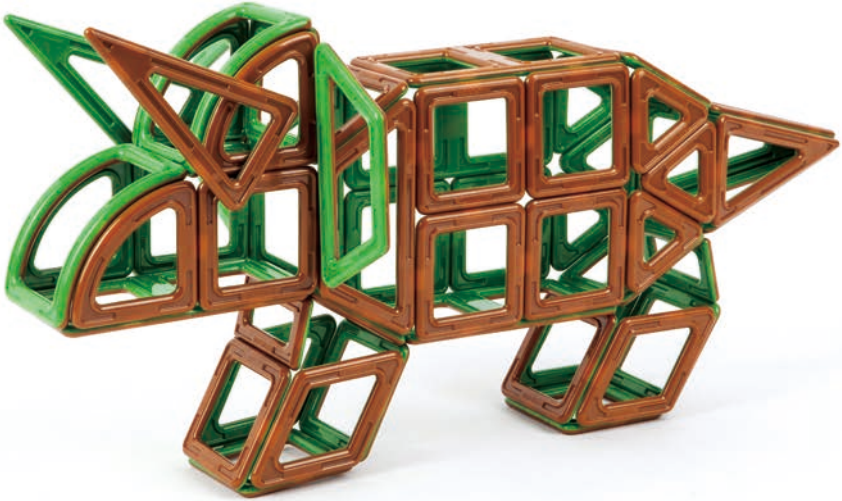
HERBIVORE



Triceratops

Meaning : Three Homed Face





Triceratops



x 6



x 6



x 19



x 2



x 4



x 4



x 4



x 4



x 2

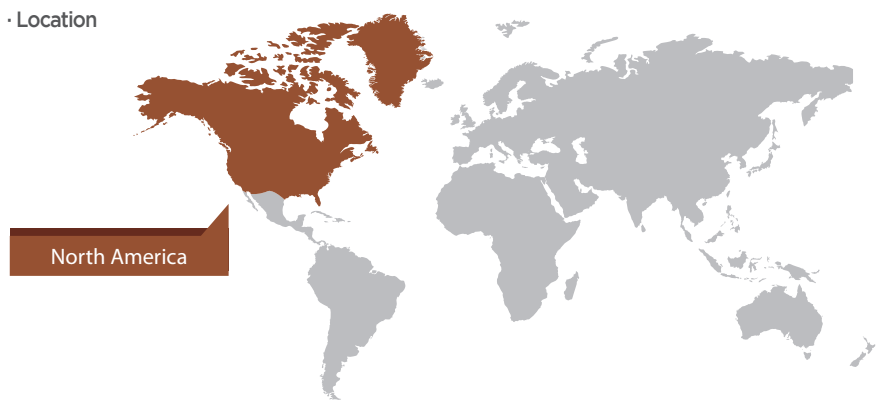


HERBIVORE



Stegosaurus

Meaning : Roofed Lizard





Stegosaurus



x 10



x 4



x 16



x 4



x 4



x 4



x 2



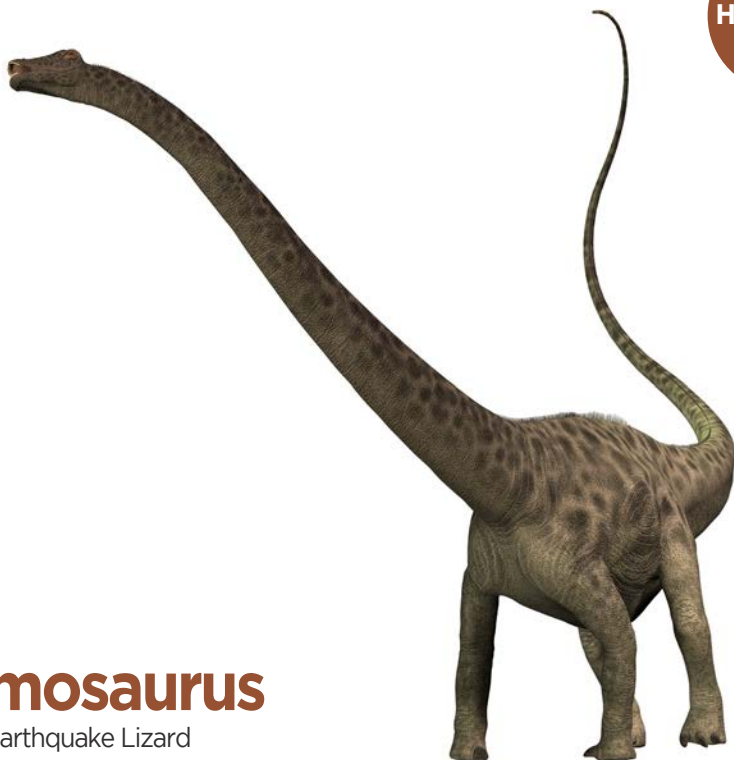
x 4



x 2



HERBIVORE



Seismosaurus

Meaning : Earthquake Lizard





Seismosaurus



x2



x4



x17



x4



x1



x4



x2



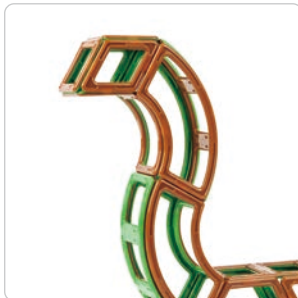
x2



x4



x2

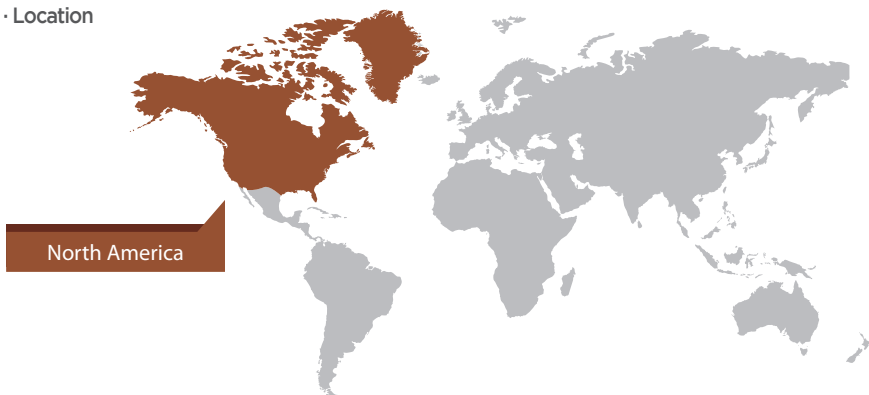


HERBIVORE



Parasaurolophus

Meaning : Near crested Lizard





Parasaurolophus



x 2



x 8



x 19



x 4



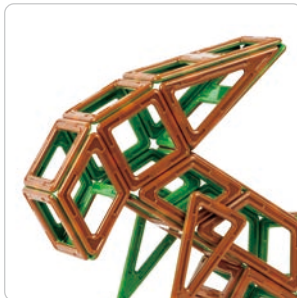
x 4



x 4



x 2

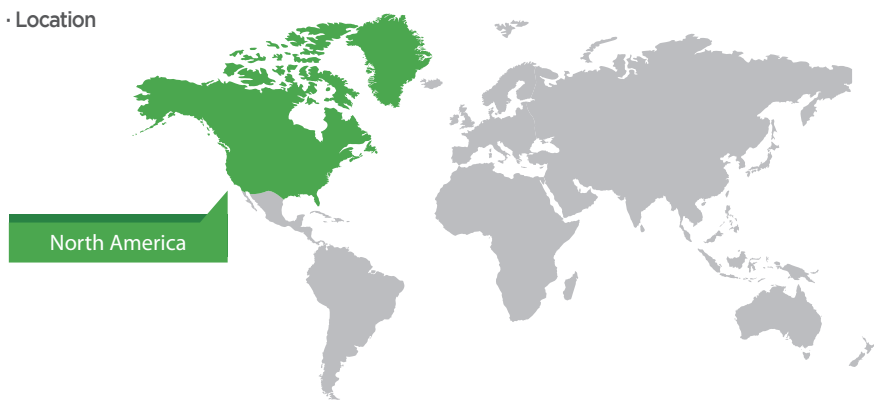


CARNIVORE



Elasmosaurus

Meaning : Thin Plate Lizard





Elasmosaurus



x4



x4



x2



x4



x2



x4



x2



x4



x2



CARNIVORE



Pteranodon

Meaning : Toothless Wing

· Length 7-9m

· Period HERE

Triassic Jurassic Cretaceous

· Location

North America Europe

A world map with North America and Europe highlighted in green. A green callout box labeled 'North America' points to the continent, and another green callout box labeled 'Europe' points to the continent.



Pteranodon



x 8



x 18



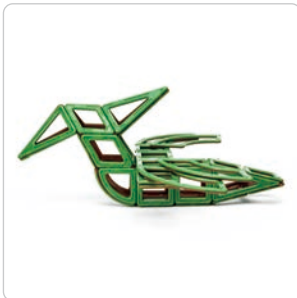
x 4



x 4



x 4

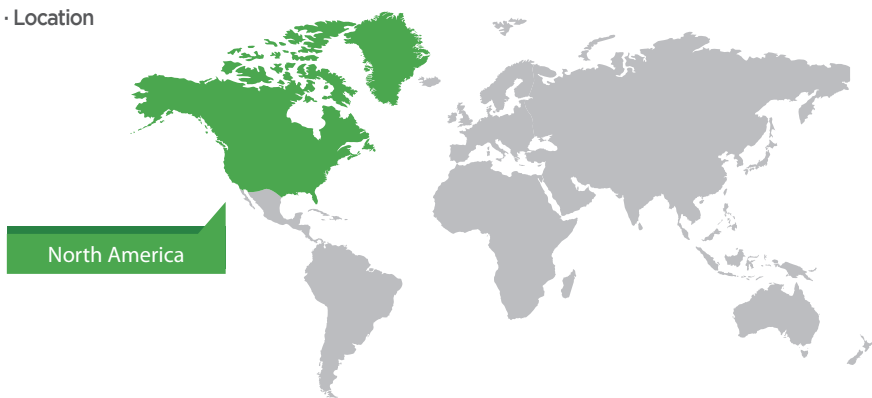


CARNIVORE



Tyrannosaurus

Meaning : Tyrant Lizard King





Tyrannosaurus



x 2



x 8



x 18



x 4



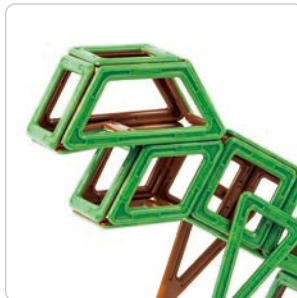
x 4



x 2



x 2



CARNIVORE



Spinosaurus

Meaning : Spiny Lizard





Spinosaurus



x7



x8



x17



x4



x3



x4



x4

