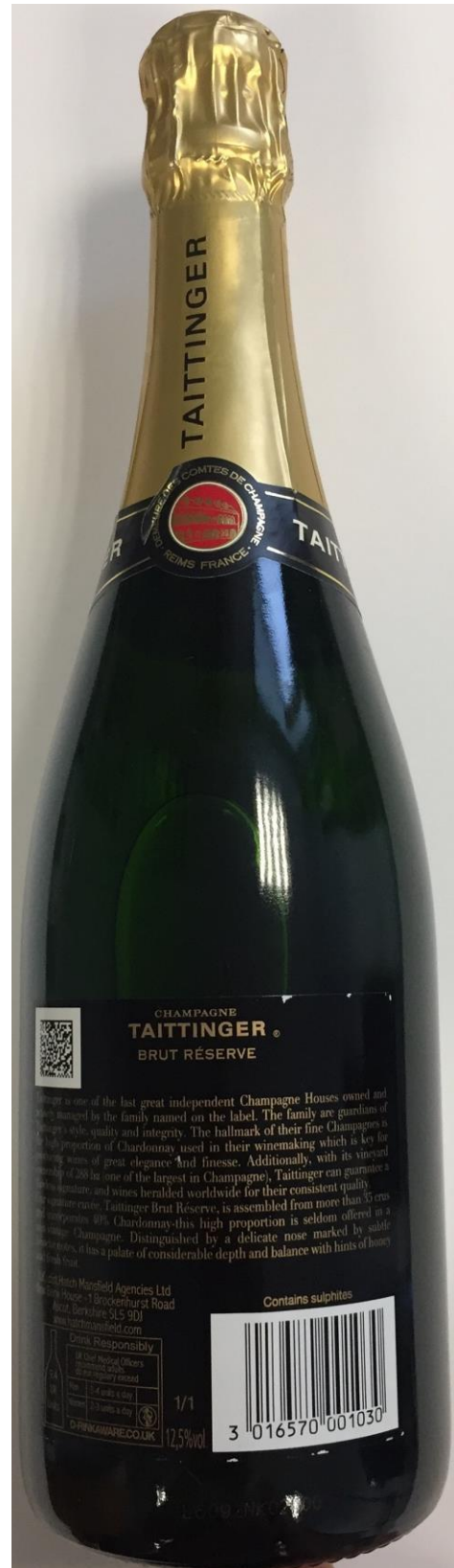


## Majestic Christmas

Champagne – Taittinger (12.5%) – 75cl





## Prosecco – Bottega Gold (11%) – 75cl



### Prosecco DOC Spumante Brut - cl 75

Bottega Gold is a Prosecco DOC, obtained by the vinification of Glera grapes, grown in the province of Treviso. Bottega Gold has been defined as the "Glamour Sparkling", which is characterized by the distinctive golden bottle.

#### Chemical Characteristics:

**ABV:** 11%

**Sugar, g/l:** 10-14

**Total Acidity, g/l:** 5,00-6,50

Red Wine – Miopasso – Primitivo Puglia (14.5%) – 75cl

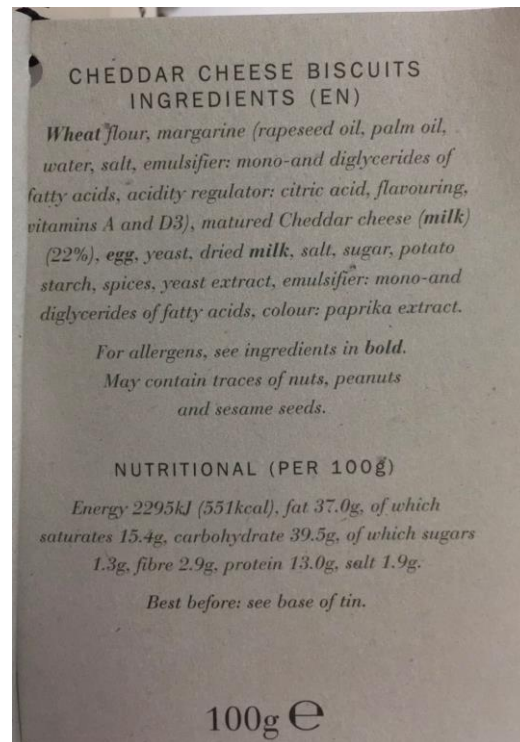




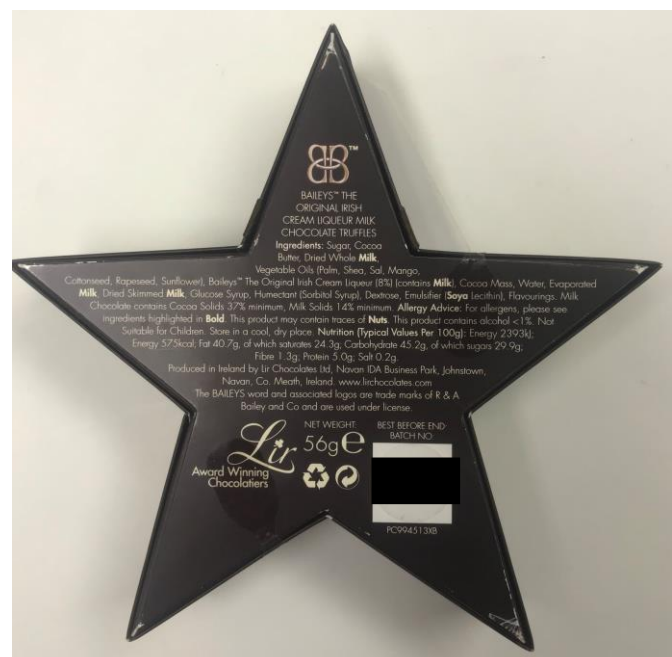
White Wine – Miopasso – Pinot Grigio (12.5%) – 75cl



## Cartwright & Butler – Cheddar Cheese Biscuits in Tin (100g)



## Baileys – Christmas Star (56g)



## Farmhouse Biscuits – Salted Caramel (150g)



**FARMHOUSE BISCUITS**  
EST. 1962

**SALTED CARAMEL BISCUITS**  
Sweet Biscuits With Salted Caramel Pieces

**INGREDIENTS:** Flour (Wheat Flour, Calcium, Iron, Niacin, Thiamin), Vegetable Oils (Palm, Rapeseed, Salt, Emulsifier: E475, Flavouring, Colours: (Annatto, Curcumin)), Sugar, Salted Caramel Pieces (10%) (Sugar, Glucose Syrup, Butter (Milk), Palm Oil, Salt, Natural Flavouring, Colour: Plain Caramel), Flavouring, Salt.

**ALLERGEN ADVICE:** For allergens, including cereals containing gluten, see ingredients in **Bold**. May also contain Egg and Soya. Manufactured in an Environment which handles Tree Nuts Suitable for Vegetarians

**STORAGE:** Store in a cool, dry place  
Once opened store in an airtight container and consume within 2 weeks  
Best Before End: See base of pack.

Nutritional Information:	
Typical Values	Per 100g
Energy	2187kJ / 523kcal
Fat	27.3g
of which Saturates	9.77g
Carbohydrate	66.5g
of which Sugars	25.3g
Protein	4.73g
Salt	1.18g

5 017162 006219

Made in England by Farmhouse Biscuits Ltd.,  
The Bakery, Brook Street, Nelson, Lancashire BB9 9PX

**150g e**

## Minters Fine Foods – Christmas Pudding (350g)



**CHRISTMAS PUDDING**

**Ingredients:** Sultanas (Sultanas, Sunflower Oil), Sugar, Breadcrumbs (**Wheat** Flour (Contains Calcium Carbonate, Iron, Thiamine, Niacin), Salt, Yeast), Cider (8%)(contains Preservative (**Sulphur Dioxide**)), Vegetable Suet (Vegetable Fat Blend (Palm Oil, Rapeseed Oil, Sunflower Oil), **Wheat** Flour), Mixed Peel (Orange Peel, Lemon Peel, Glucose Fructose Syrup, Salt, Citric Acid, Preservative: **Sulphur Dioxide**), Liquid Whole **Egg**, **Wheat** Flour,

Nutritional Information	
Typical values per 100g	
Energy Kcal	<b>356</b>
Energy Kj	<b>1503</b>
Protein (g)	<b>3.5</b>
Total Fat (g)	<b>8.2</b>
of which Saturates	<b>4.5</b>
Total Carbohydrate	<b>65.6</b>
of which Sugars	<b>46.2</b>
Dietary Fibre (g)	<b>0.0</b>
Salt (g)	<b>0.26</b>

0 506029 994036

**Weight: 350g**

MINTERS FINE FOODS  
ST4 4LG  
TEL: 01477 500 660

**COOK PER INSTRUCTIONS SEE BASE,  
AND CONSUME WITHIN 24 HOURS.**

**FOR BEST BEFORE SEE BASE**



## A gold-colored box of Hamlet Assortment Belgian Chocolates. The box is wrapped in a textured gold paper. A large, shiny gold ribbon bow is tied around the top. A small white tag is attached to the bow, featuring the brand name 'Hamlet' in a cursive font, the word 'Assortment' in a bold sans-serif font, and three images of different chocolate pieces: a round one with a swirl, a square one, and a round one with a swirl. The tag also has the text 'Belgian Chocolates' at the bottom.





## Edinburgh Tea & Coffee Company – Medium Roast Coffee (56g)



## Glenfiddich – 6 Luxury Mincemeat Tarts (372g)



## Arden & Amici – Topsy Tiramisu Panettone (750g)

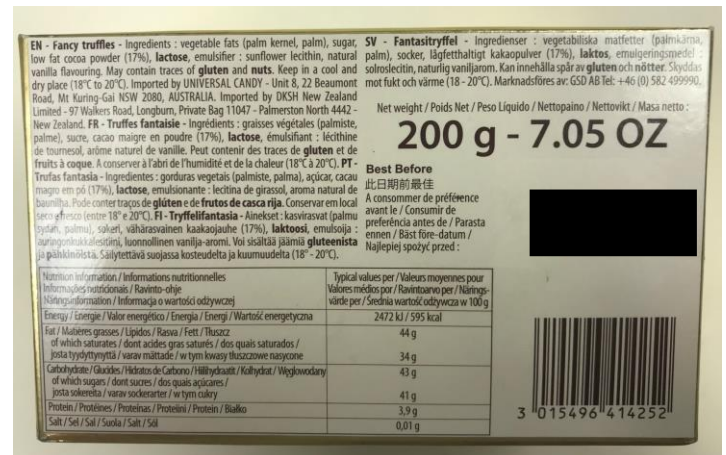


Ingredient Declaration		Wheat Flour, TIRAMISU CREAM (16%): Sugar, Glucose Syrup, Butter (Milk), Egg Yolk, Skimmed Milk Powder, Alcohol, Mascarpone (Milk), Flavours, Thickener: Pectin; Preservative: Potassium Sorbate;; Fresh Free Range Whole Eggs, Sugar, CHOCOLATE TOPPING (10%): Cocoa Paste, Sugar, Cocoa Butter, Butter Milk Fat, Soya Lecithin; Butter (Milk), COFFEE SYRUP (8%): Sugar, Coffee Distillate, Alcohol, Flavours; Milk, AMARETTI GRAINS (3%): Sugar, Apricot Kernels, Egg White; Yeast, Candied Orange Peel Paste: Orange Peel, Glucose-Fructose Syrup, Sugar, Acidity Regulator: Citric Acid; Emulsifier: Mono and Diglycerides of Fatty Acids;; Salt, Fructose Syrup, Flavours.			
Ingredients to be 'QUIDed'		Tiramisu Cream (16%), Coffee Syrup (8%), Chocolate Topping (10%) <u>Amaretti</u> Grains (3%)			
On Pack Flashes Required e.g. NEW		N/A			
Nutritionals					
(Mandatory)	Per 100g (Mandatory)	Per Serving	% RI Per 100g (Voluntary)	RI (Voluntary)	
kJ	1705	1598	20	8400	
kcal	406	381	20	2000	
Fat	18.2	17.1	26	70	
Saturated fat	10.9	10.2	55	20	
Carbohydrate	52.8	49.5	20	260	
of which sugars	34.1	32.0	38	90	
Fibre if claim made	1.8	1.7	8	24	
Protein	7.0	6.6	14	50	
Salt	0.40	0.4	7	6	
Additional MTL Values (Voluntary)					
Each 'serving' contains	kcal	Sugars	Fat	Saturates	Salt
	19.0	35.5	24.4	51.1	6.3
	%	%	%	%	%
Reference intake of an average adult (8400kJ/2000kcal).					
Suitable for Vegetarians	Yes				
Suitable for Vegans	No				
For allergens, including cereals containing gluten, see ingredients in bold. May contain nuts, soya and sulphites.					

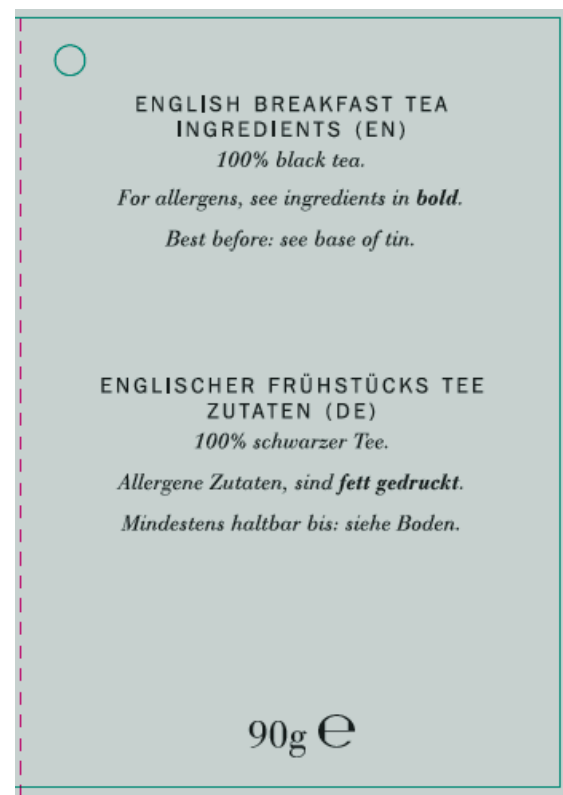
## Copperpot – All Butter Fudge (150g)



## Jacquot – Bitter Classic Truffles (200g)



## Cartwright & Butler – English Breakfast Tea in Tin (90g)





## Tod's Kitchen – Cheeseboard Chutney (100g)



## Yorkshire Crisps – Black Pepper (100g)

